

REVISIONS		
DATE	NAME	NUMBER
AUG. 1, 1988	HOWARD M. SCHOOR	14551
JAN. 19, 1992	JAMES A. CLANCY	33998

PLATE 2

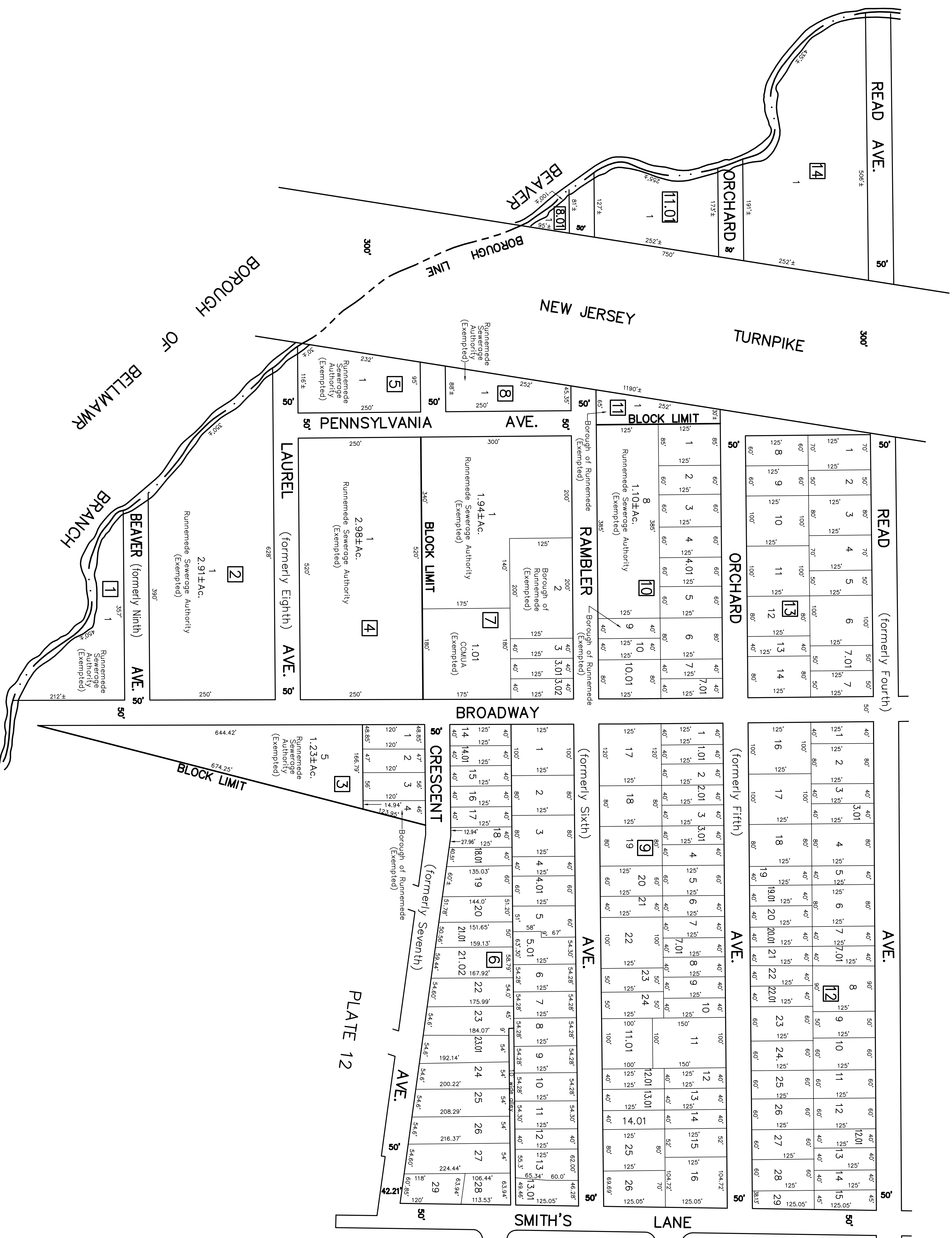


PLATE 12

PLATE 12.02

PLATE 3

TAX MAP
BOROUGH of RUNNEMEDE
 CAMDEN COUNTY, NEW JERSEY
 SCALE: 1" = 100'
 HOWARD M. SCHOOR P.E.-L.S.
 SCHOOR, DEPALMA & LOWE
 1000 WHITE HORSE ROAD
 VOORHEES, N.J. 08043