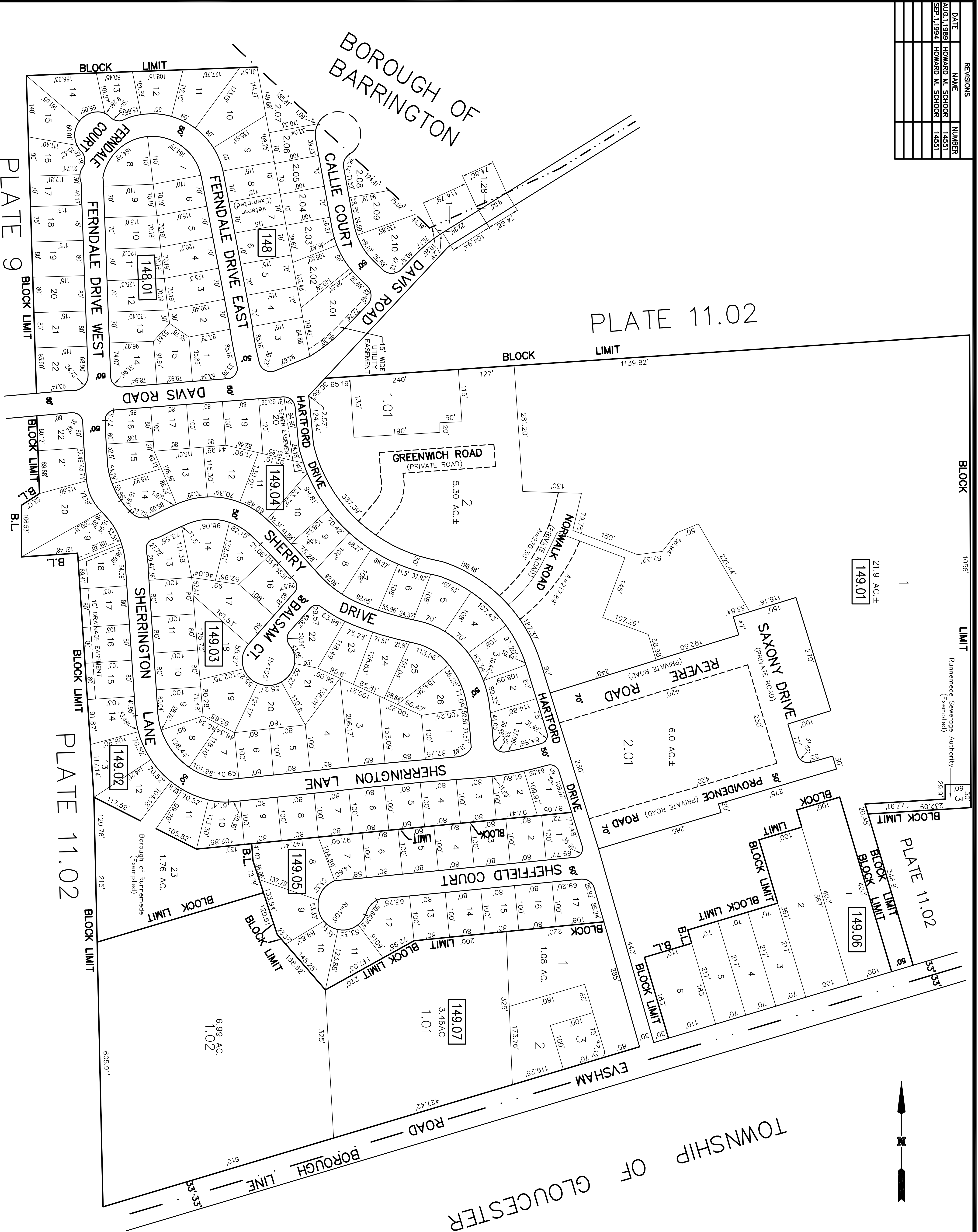


REVISIONS		
DATE	NAME	NUMBER
AUG.1,1989	HOWARD M. SCHOOR	1455T
SEP.1,1994	HOWARD M. SCHOOR	1455T

PLATE 11.02

11.01



TAX MAP
BOROUGH of RUNNEMEDE
 CAMDEN COUNTY,
 NEW JERSEY
 SCALE: 1" = 100'
 OCTOBER-1988
 HOWARD M. SCHOOR P.E.-L.S.
 SCHOOR, DEPALMA & LOWE
 1000 WHITE HORSE ROAD
 VOORHEES, N.J. 08043