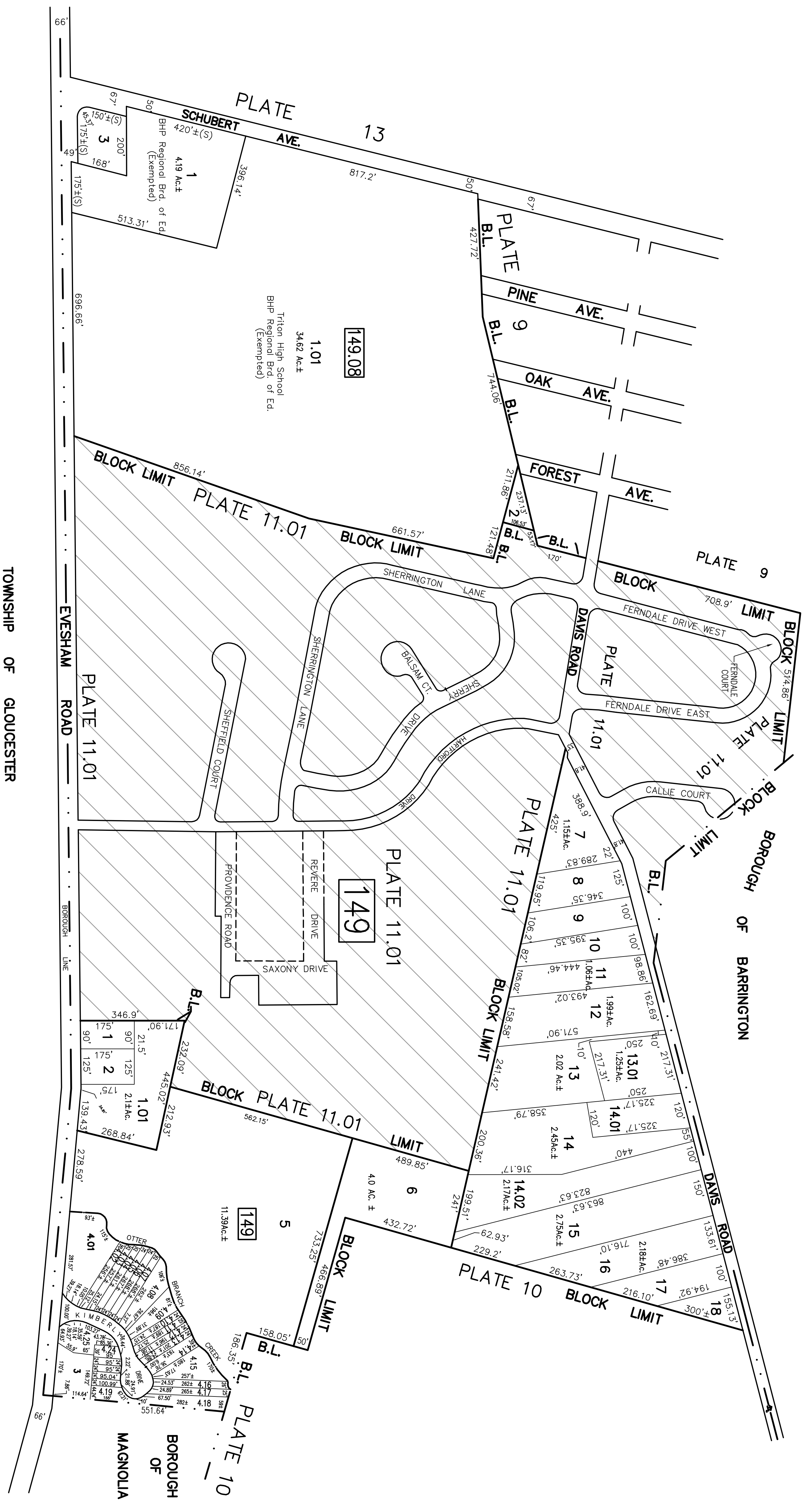
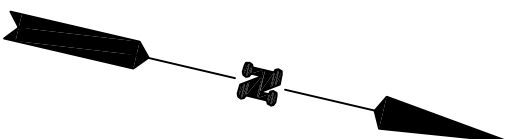


REVISIONS			
DATE	NAME	NUMBER	
AUG.11.1989	HOWARD M. SCHOOK	14551	
OCT.1.1989	HOWARD M. SCHOOK	14551	
DEC.1.1994	HOWARD M. SCHOOK	14551	



TOWNSHIP OF GLOUCESTER

BOROUGH OF BARRINGTON

BOROUGH OF MAGNOLIA

TAX MAP
BOROUGH of RUNNEMEDE
 CAMDEN COUNTY, NEW JERSEY
 SCALE: 1" = 200'
 OCTOBER-1988
 HOWARD M. SCHOOK P.E.-L.S.
 SCHOOK, DEPALMA & LOWE
 1000 WHITE HORSE ROAD
 VOORHEES, N.J. 08043