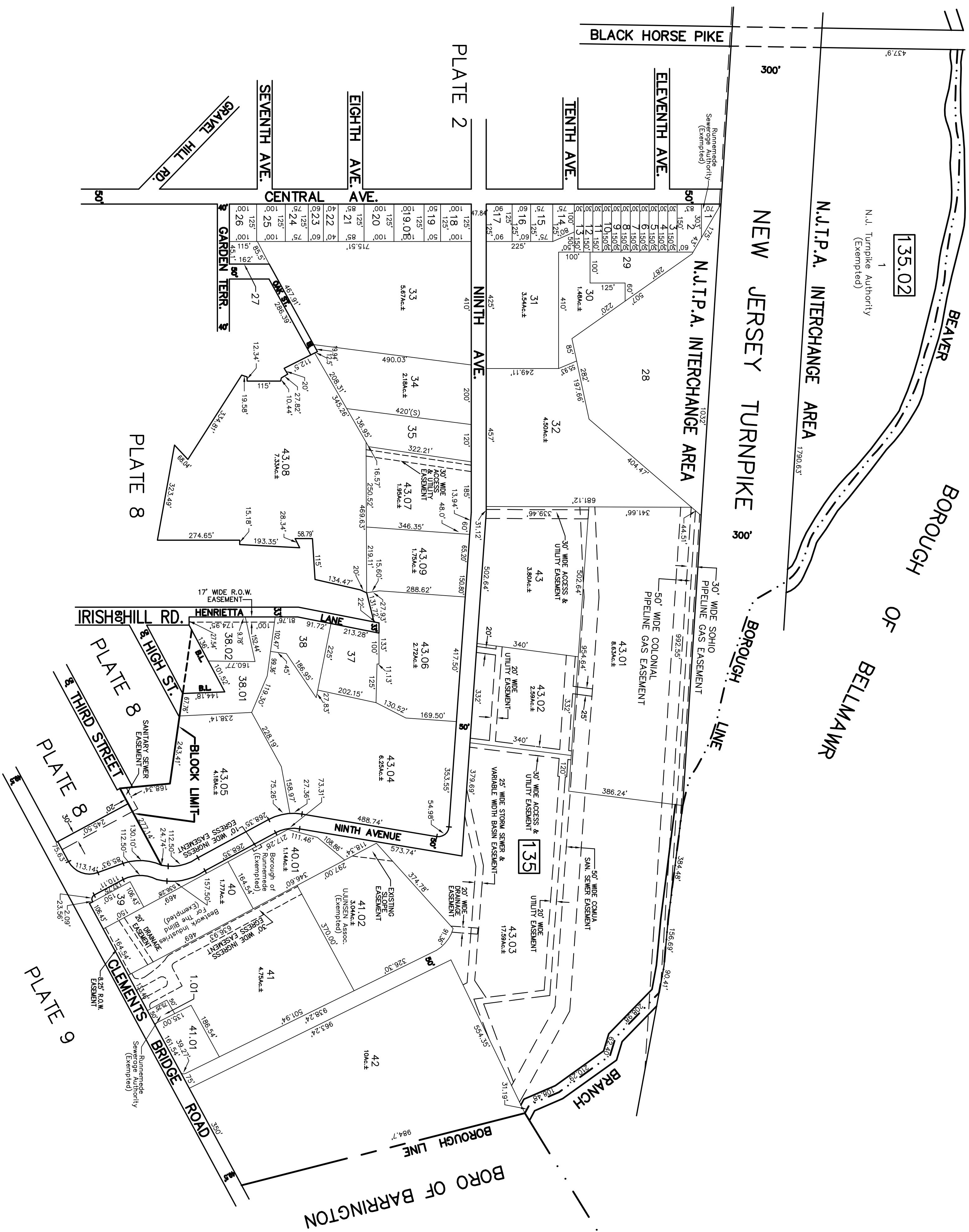


REVISIONS		
DATE	NAME	NUMBER
AUG.1.1991	HOWARD M. SCHOOR	1451
AUG.1.1991	HOWARD M. SCHOOR	1451
SEP.1.1994	HOWARD M. SCHOOR	1451
APR.1.1998	JAMES A. CLAW	3399



TAX MAP
BOROUGH of RUNNEMEDE
 CAMDEN COUNTY, NEW JERSEY
 SCALE: 1" = 200'
 OCTOBER-1988
 HOWARD M. SCHOOR P.E.-L.S.
 SCHOOR, DEPALMA & LOWE
 1000 WHITE HORSE ROAD
 VOORHEES, N.J. 08043