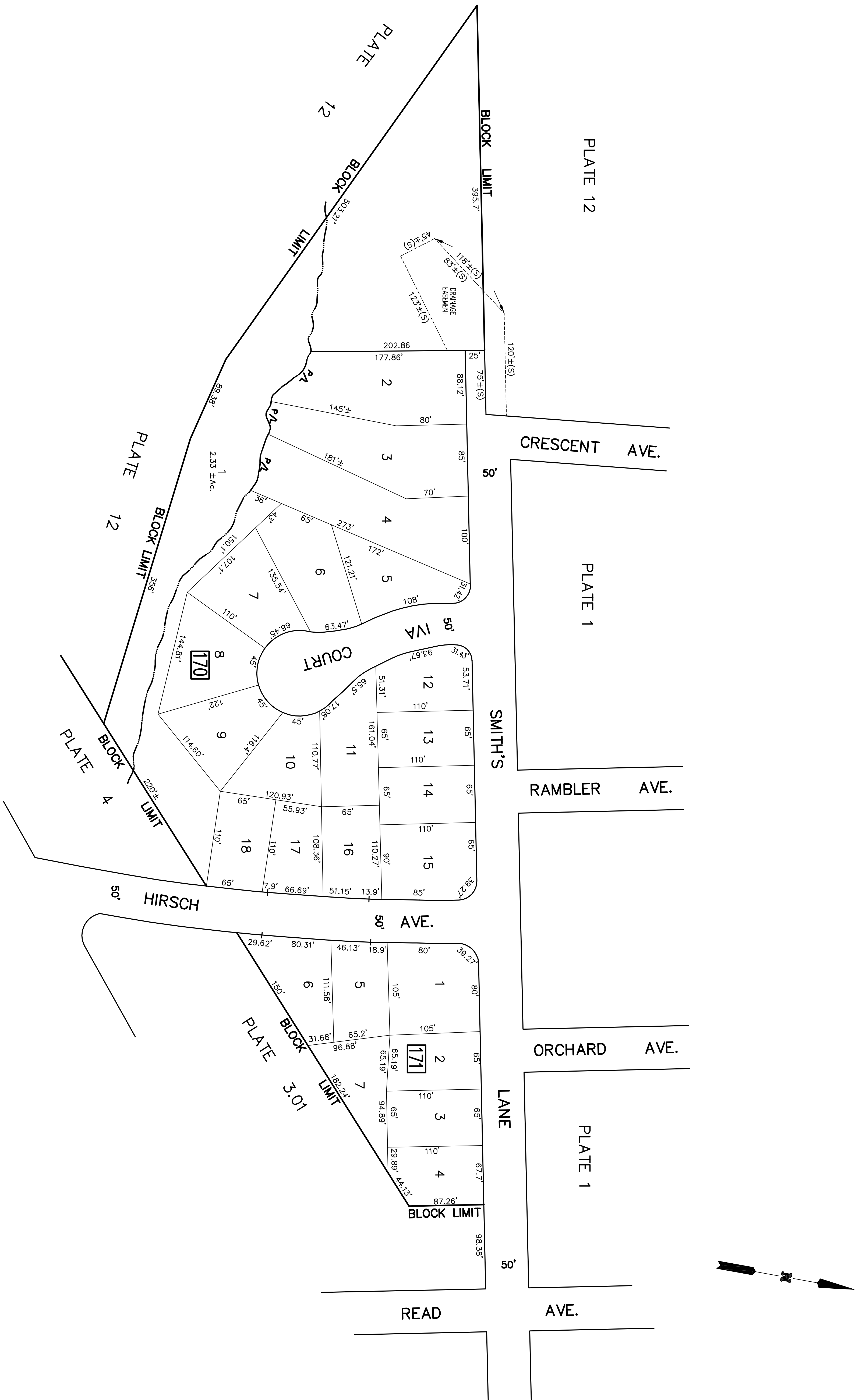


REVISIONS		
DATE	NAME	NUMBER
AUG.1,1989	HOWARD M. SCHOOR	14951



**TAX MAP**  
**BOROUGH of RUNNEMEDE**  
 CAMDEN COUNTY,  
 NEW JERSEY  
 SCALE: 1" = 60'  
 OCTOBER-1988  
**HOWARD M. SCHOOR P.E.-L.S.**  
 SCHOOR, DEPALMA & LOWE  
 1000 WHITE HORSE ROAD  
 VOORHEES, N.J. 08043