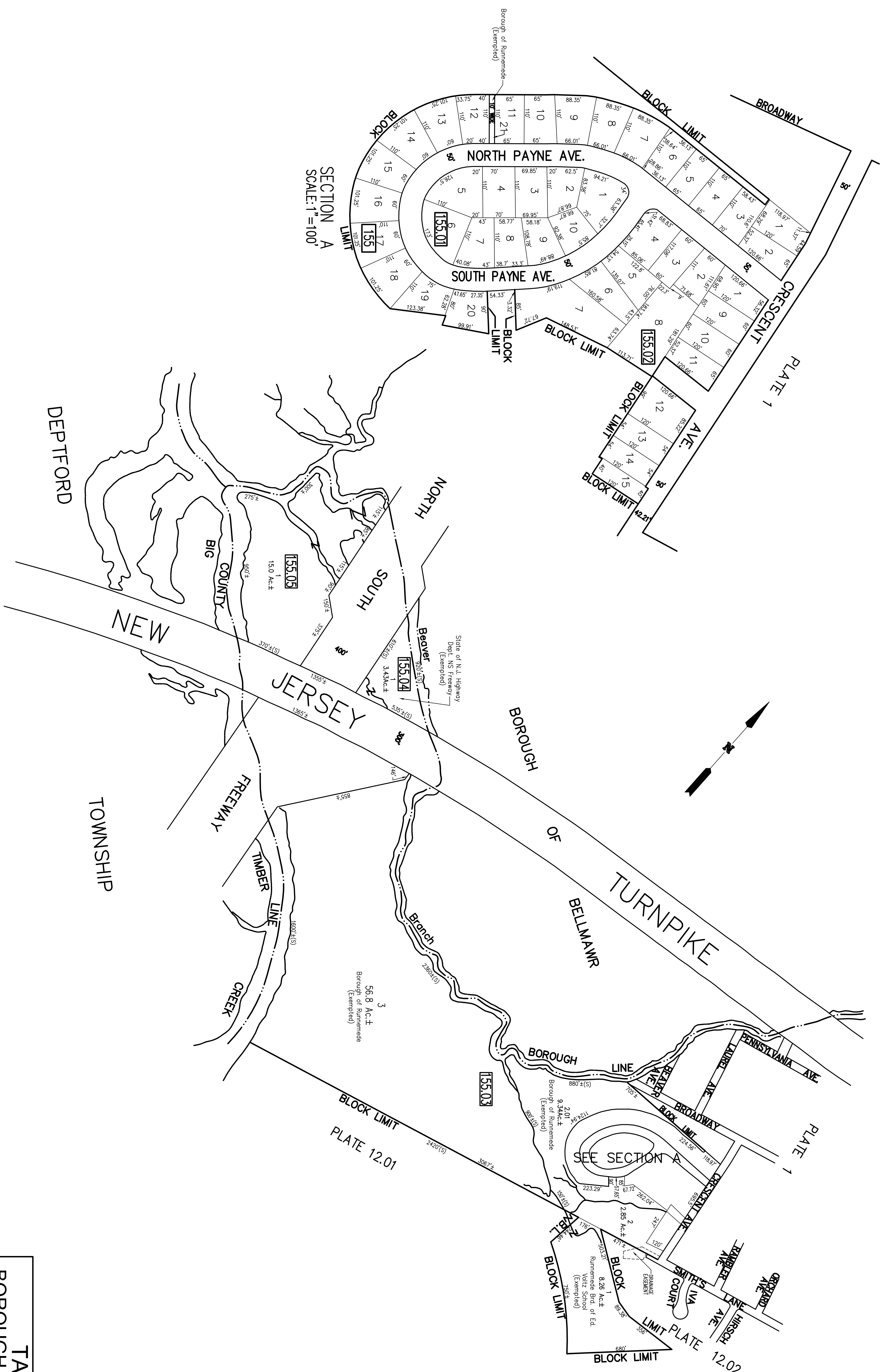


REVISIONS		
DATE	NAME	NUMBER
AUG 1, 1989	HOWARD M. SCHOOR	145ST



**TAX MAP**  
**BOROUGH of RUNNEMEDE**  
 CAMDEN COUNTY,  
 NEW JERSEY  
 SCALE: 1" = 300'  
 OCTOBER-1988  
**HOWARD M. SCHOOR P.E.-L.S.**  
 SCHOOR, DEPALMA & LOWE  
 1000 WHITE HORSE ROAD  
 VOORHEES, N.J. 08043

DEPTFORD  
 GLOUCESTER COUNTY  
 TOWNSHIP

SECTION A  
 SCALE: 1"=100'