

REVISIONS		
DATE	NAME	NUMBER
AUG.1.1989	HOWARD M. SCHOOR	14551
OCT.1.1989	HOWARD M. SCHOOR	14551
DEC.1.1990	HOWARD M. SCHOOR	14551
SEP.1.1994	HOWARD M. SCHOOR	14551

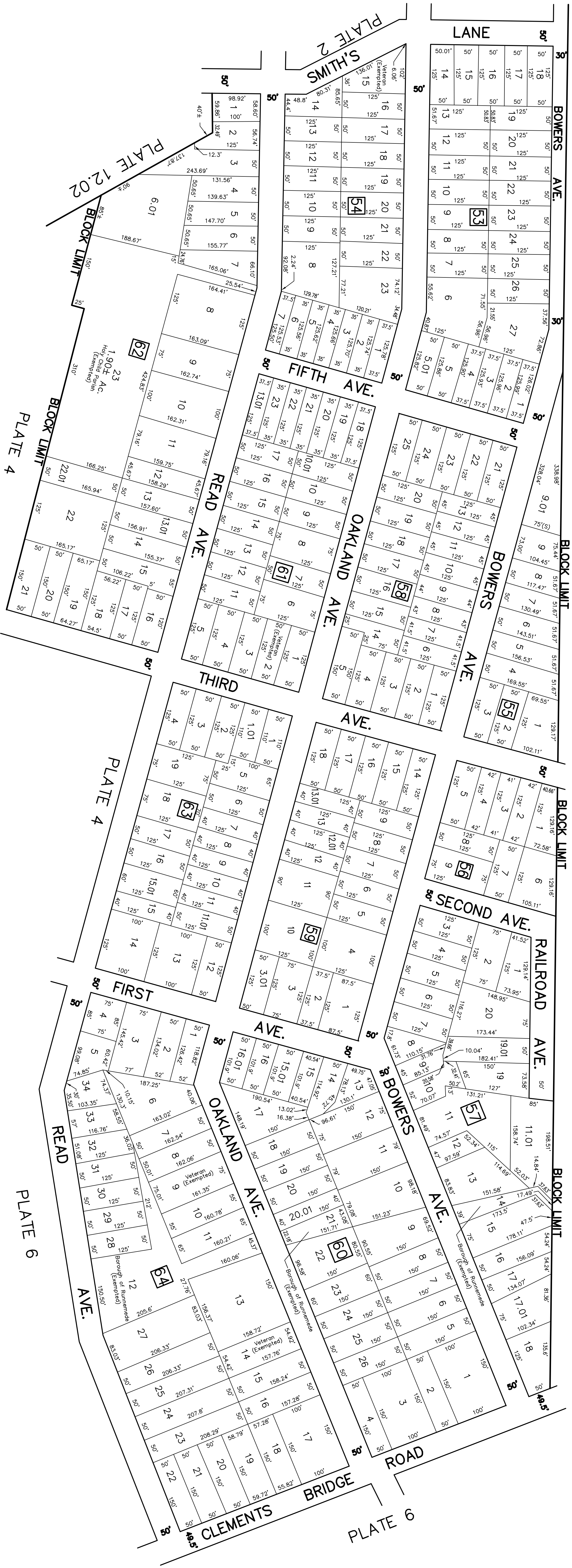
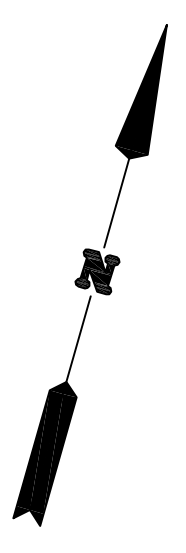


PLATE 3

PLATE 3

PLATE 6

PLATE 9

**TAX MAP**  
**BOROUGH of RUNNEMEDE**  
 CAMDEN COUNTY, NEW JERSEY  
 SCALE: 1" = 100'  
 OCTOBER-1988  
 HOWARD M. SCHOOR P.E.-L.S.  
 SCHOOR, DEPALMA & LOWE  
 1000 WHITE HORSE ROAD  
 VOORHEES, N.J. 08043