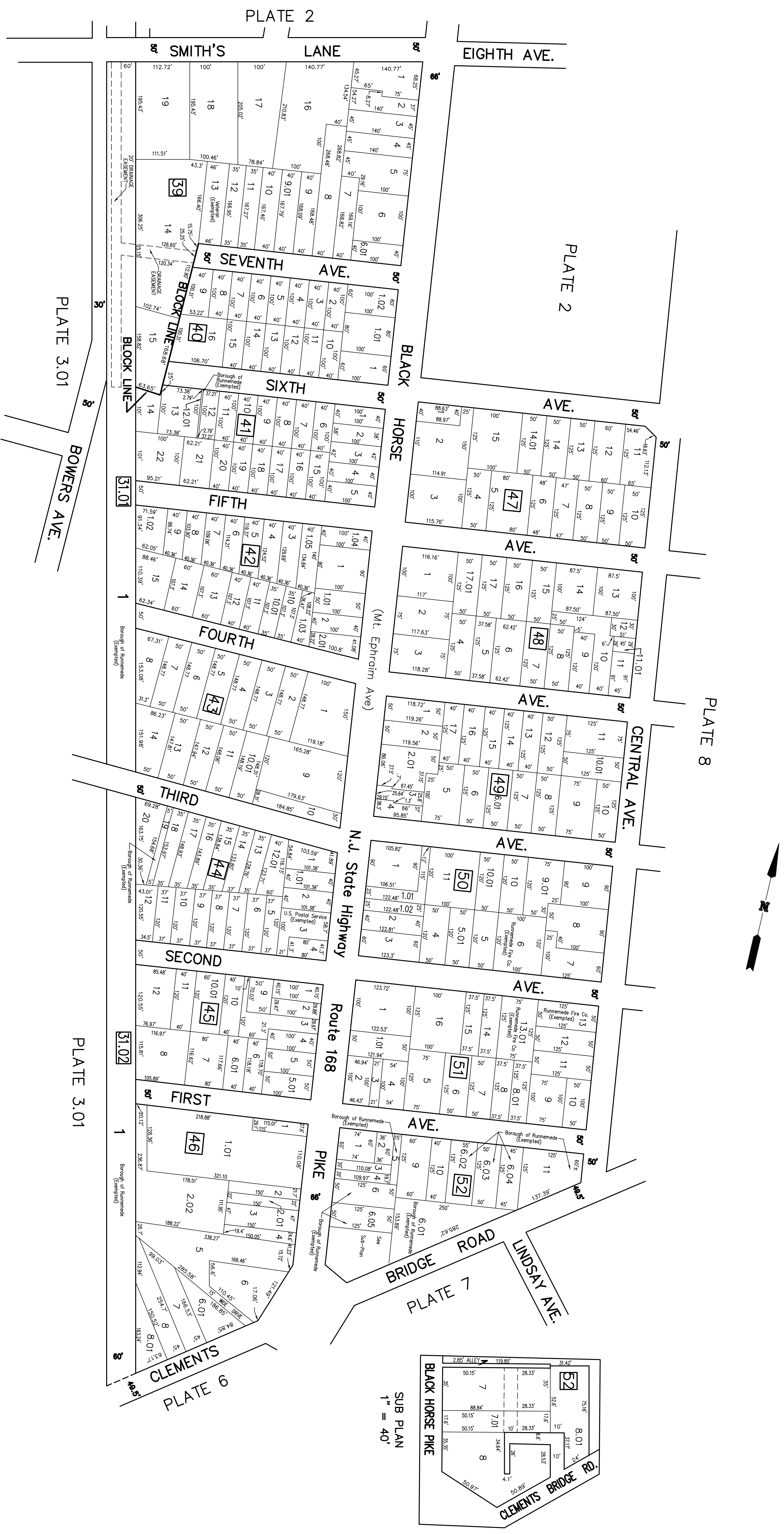


REVISIONS		
DATE	NAME	NUMBER
AUG 1, 1989	HOWARD M. SCHOOOR	1451
OCT. 1, 1989	HOWARD M. SCHOOOR	1451
FEB. 1, 1992	HOWARD M. SCHOOOR	1451
SEP. 1, 1994	HOWARD M. SCHOOOR	1451



**TAX MAP**  
**BOROUGH of RUNNEMEDE**  
 CAMDEN COUNTY, NEW JERSEY  
 SCALE: 1" = 100'  
 OCTOBER-1988  
 HOWARD M. SCHOOOR P.E.-L.S.  
 SCHOOOR, DEPALMA & LOWE  
 1000 WHITE HORSE ROAD  
 VOORHEES, N.J. 08043