

DATE	NAME	NUMBER
AUG.1,1989	HOWARD M. SCHOOR	14551
FEB.1,1992	HOWARD M. SCHOOR	14551

REVISIONS

PLATE 12.01

PLATE 12.02

PLATE 3.01

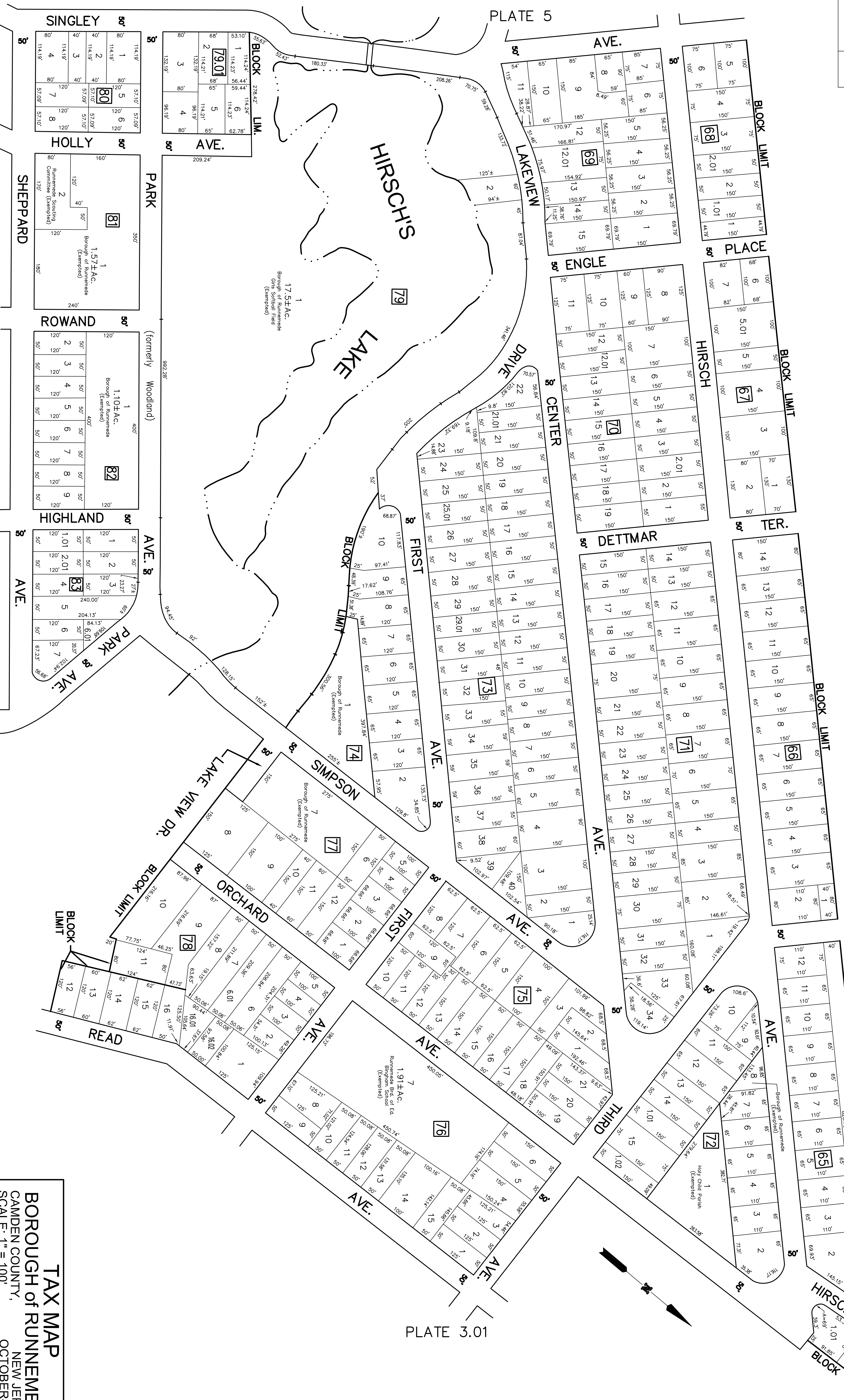


PLATE 5

PLATE 6

TAX MAP
 BOROUGH of RUNNEMEDE
 CAMDEN COUNTY,
 NEW JERSEY
 SCALE: 1" = 100'
 OCTOBER-1988
 HOWARD M. SCHOOR P.E.-L.S.
 SCHOOR, DEPALMA & LOWE
 1000 WHITE HORSE ROAD
 VOORHEES, N.J. 08043