

REVISIONS		
DATE	NAME	NUMBER
AUG.1,1989	HOWARD M. SCHOOR	1451
OCT.1,1989	HOWARD M. SCHOOR	1451
APR.1,1991	HOWARD M. SCHOOR	1451
SEP.1,1994	HOWARD M. SCHOOR	1451

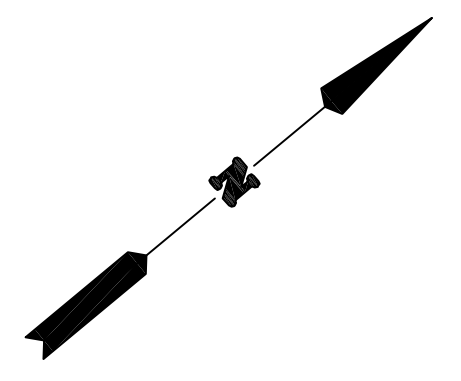
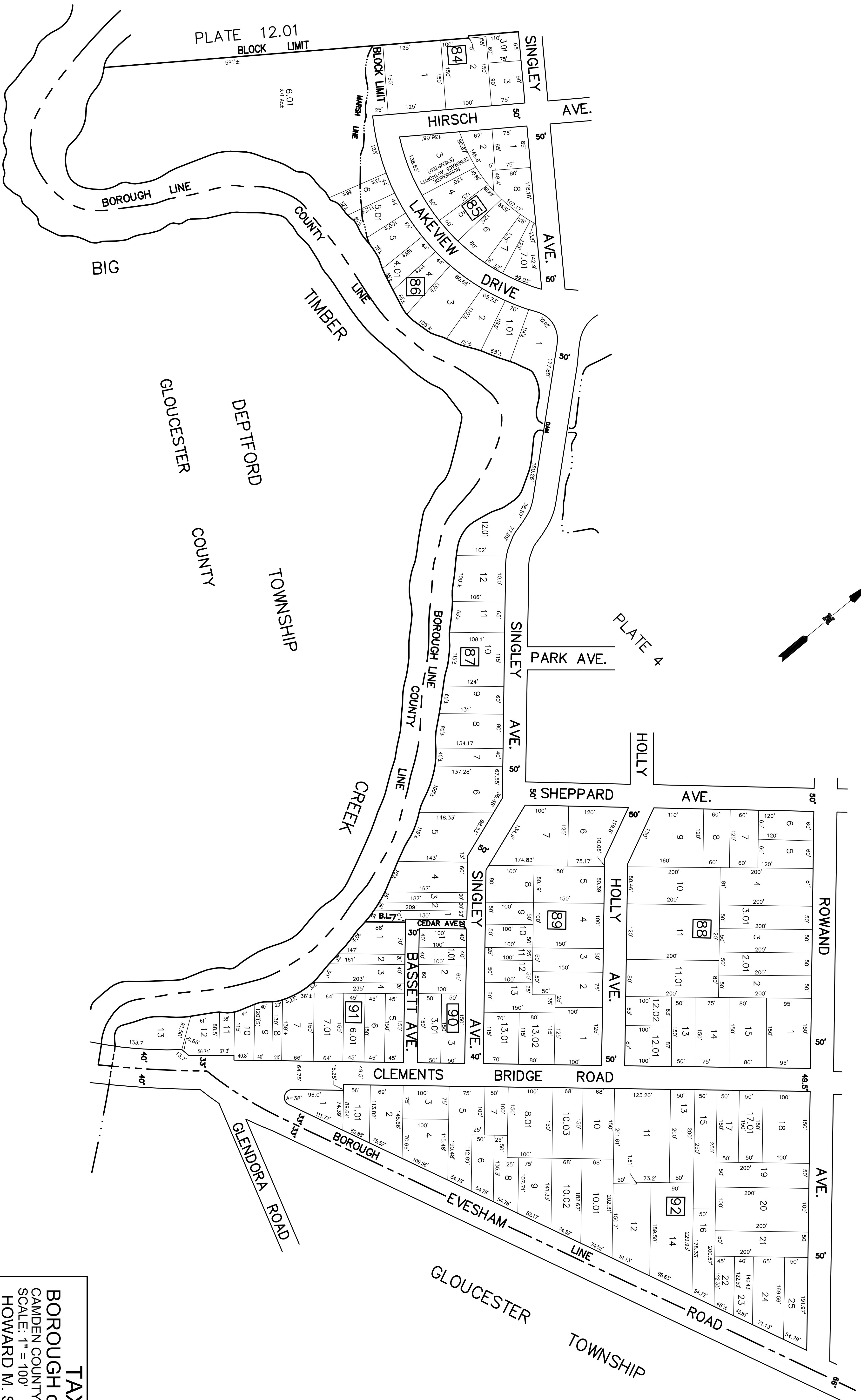


PLATE 6

TAX MAP
BOROUGH of RUNNEMEDE
 CAMDEN COUNTY, NEW JERSEY
 SCALE: 1" = 100'
 HOWARD M. SCHOOR P.E.-L.S.
 SCHOOR, DEPALMA & LOWE
 1000 WHITE HORSE ROAD
 VOORHEES, N.J. 08043