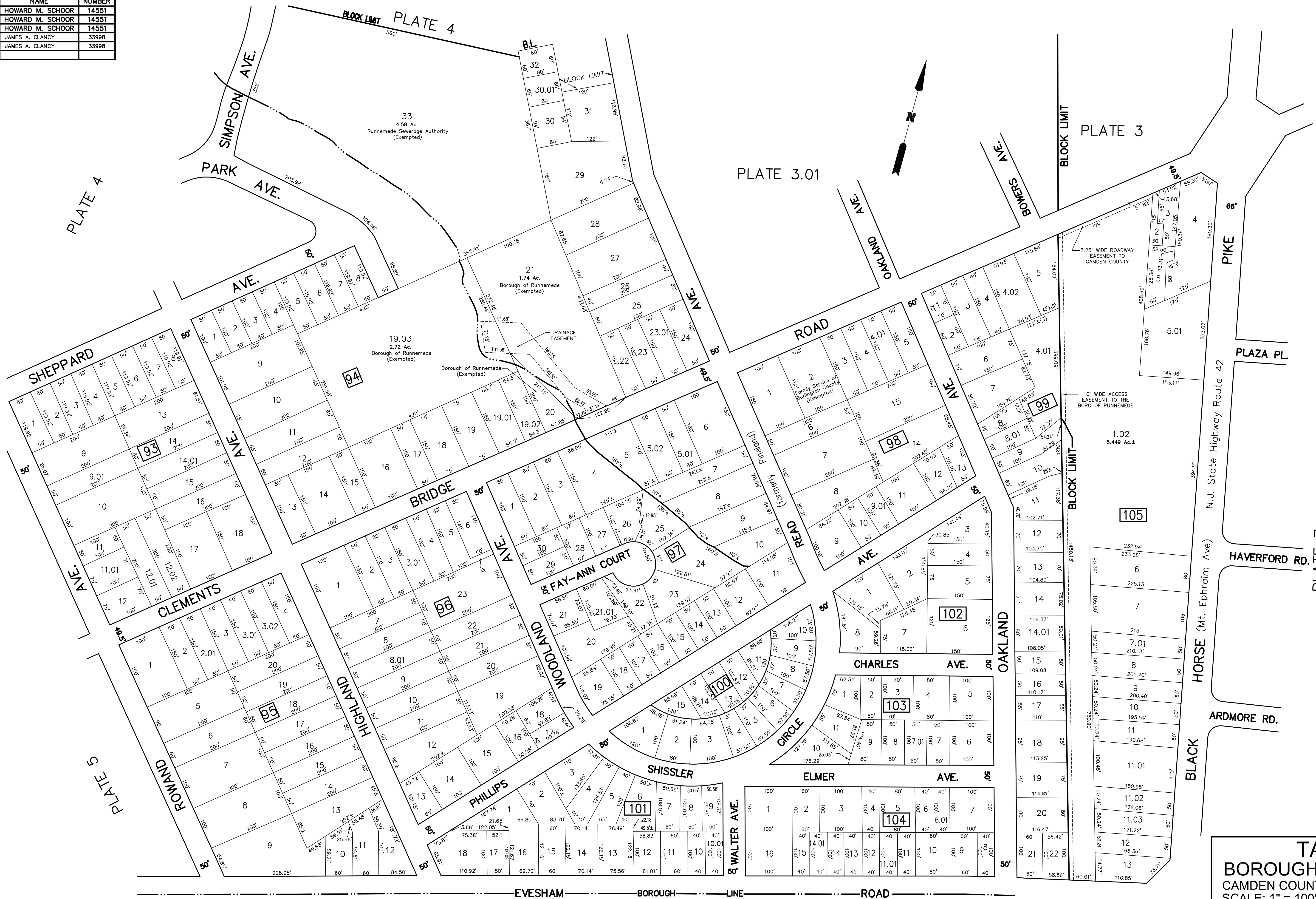


REVISIONS		
DATE	NAME	NUMBER
AUG.1,1989	HOWARD M. SCHOOR	14551
FEB.1,1992	HOWARD M. SCHOOR	14551
SEP.1,1994	HOWARD M. SCHOOR	14551
APR.30,1997	JAMES A. CLANCY	33998
JAN.19,1999	JAMES A. CLANCY	33998



**TAX MAP**  
**BOROUGH of RUNNEMEDE**  
 CAMDEN COUNTY, NEW JERSEY  
 SCALE: 1" = 100' OCTOBER-1988  
 HOWARD M. SCHOOR P.E.-L.S.  
 SCHOOR, DEPALMA & LOWE  
 1000 WHITE HORSE ROAD  
 VOORHEES, N.J. 08043