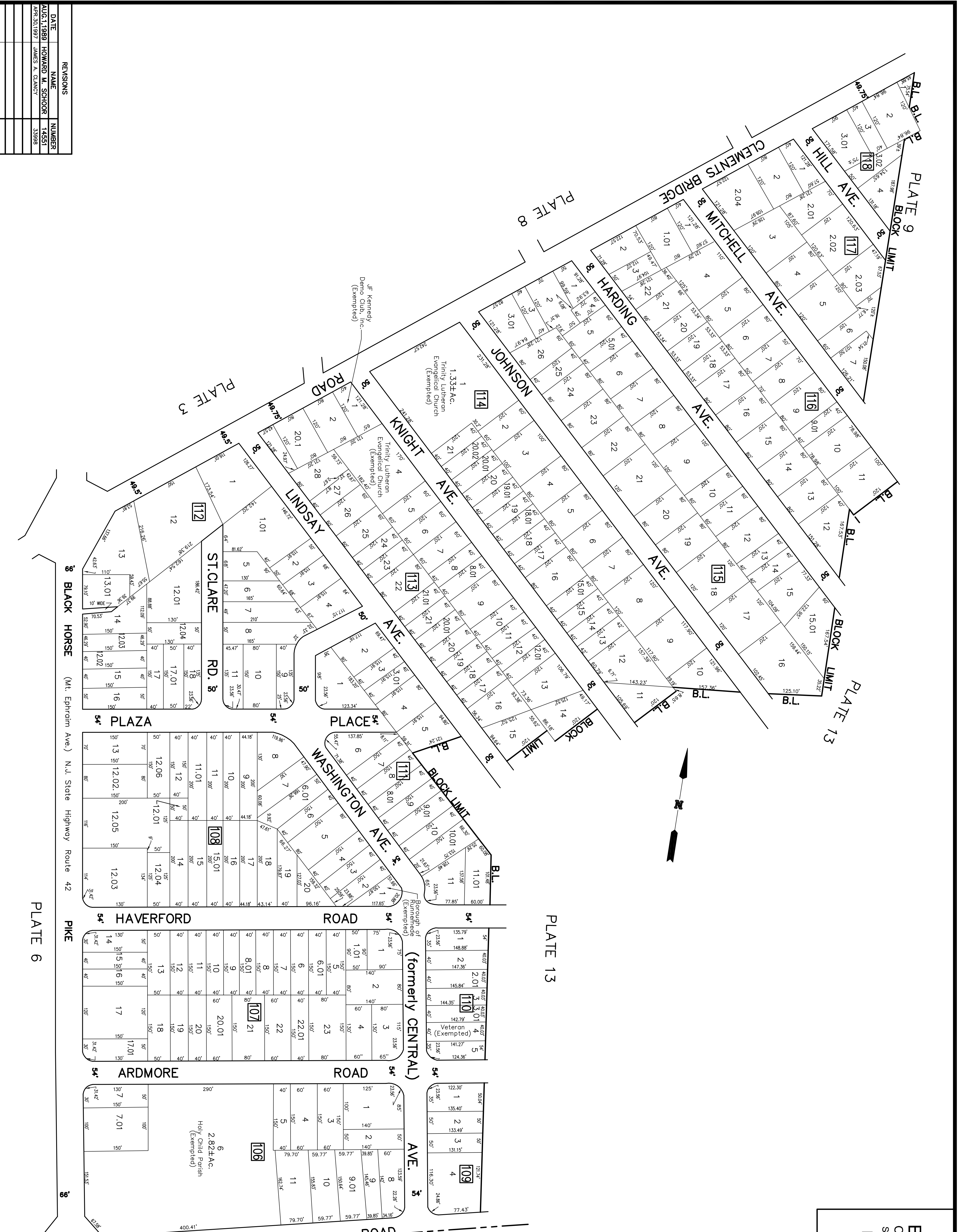
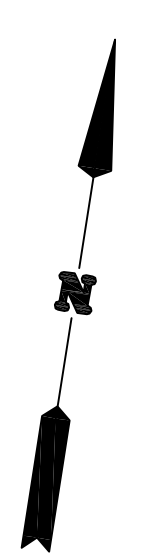


TAX MAP

BOROUGH of RUNNEMEDE  
CAMDEN COUNTY,  
NEW JERSEY  
OCTOBER-1988  
SCALE: 1" = 100'  
HOWARD M. SCHOOR P.E.-L.S.  
SCHOOR, DEPALMA & LOWE  
1000 WHITE HORSE ROAD  
VOORHEES, N.J. 08043



DATE	NAME	NUMBER
AUG. 1, 1989	HOWARD M. SCHOOR	1458T
APR. 30, 1987	JAMES A. CLANCY	3398B

REVISIONS

DATE	NAME	NUMBER
AUG. 1, 1989	HOWARD M. SCHOOR	1458T
APR. 30, 1987	JAMES A. CLANCY	3398B