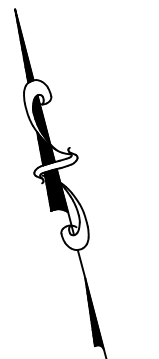


BOROUGH OF RUNNEMEDE SANITARY SEWER DISTRIBUTION SYSTEM



BACH Associates, PC
ENGINEERS • ARCHITECTS • PLANNERS

304 White Horse Pike
Haddon Heights, New Jersey 08035
Tel: 856-546-8611
Fax: 856-546-8612
www.BachDesignGroup.com



A1	A2	A3	A4	A5
B1	B2	B3	B4	B5
C2	C3	C4	C5	
D2	D3			

PROJECT:

SANITARY SEWER DISTRIBUTION SYSTEM

BOROUGH OF RUNNEMEDE
GLOUCESTER COUNTY, NEW JERSEY

ALL DOCUMENTS PREPARED BY BACH ASSOCIATES, PC ARE INSTRUMENTS OF SERVICE IN RESPECT OF THE PROJECT. THEY ARE NOT INTENDED OR REPRESENTED TO BE SUITABLE FOR REUSE BY OWNER OR OTHERS ON EXTENSIONS OF THE PROJECT OR ON ANY OTHER PROJECT. ANY REUSE WITHOUT WRITTEN VERIFICATION OR ADAPTATION BY BACH ASSOCIATES, PC FOR THE SPECIFIC PURPOSES INTENDED WILL BE AN OWNER'S SOLE RISK AND WITHOUT LIABILITY OR LEGAL EXPOSURE TO BACH ASSOCIATES, PC. AND OWNER SHALL INDEMNIFY AND HOLD HARMLESS BACH ASSOCIATES, PC FROM ALL CLAIMS, DAMAGES, LOSSES AND EXPENSES ARISING OUT OF OR RESULTING THEREFROM.

REVISIONS

NO.	DESCRIPTION	DATE

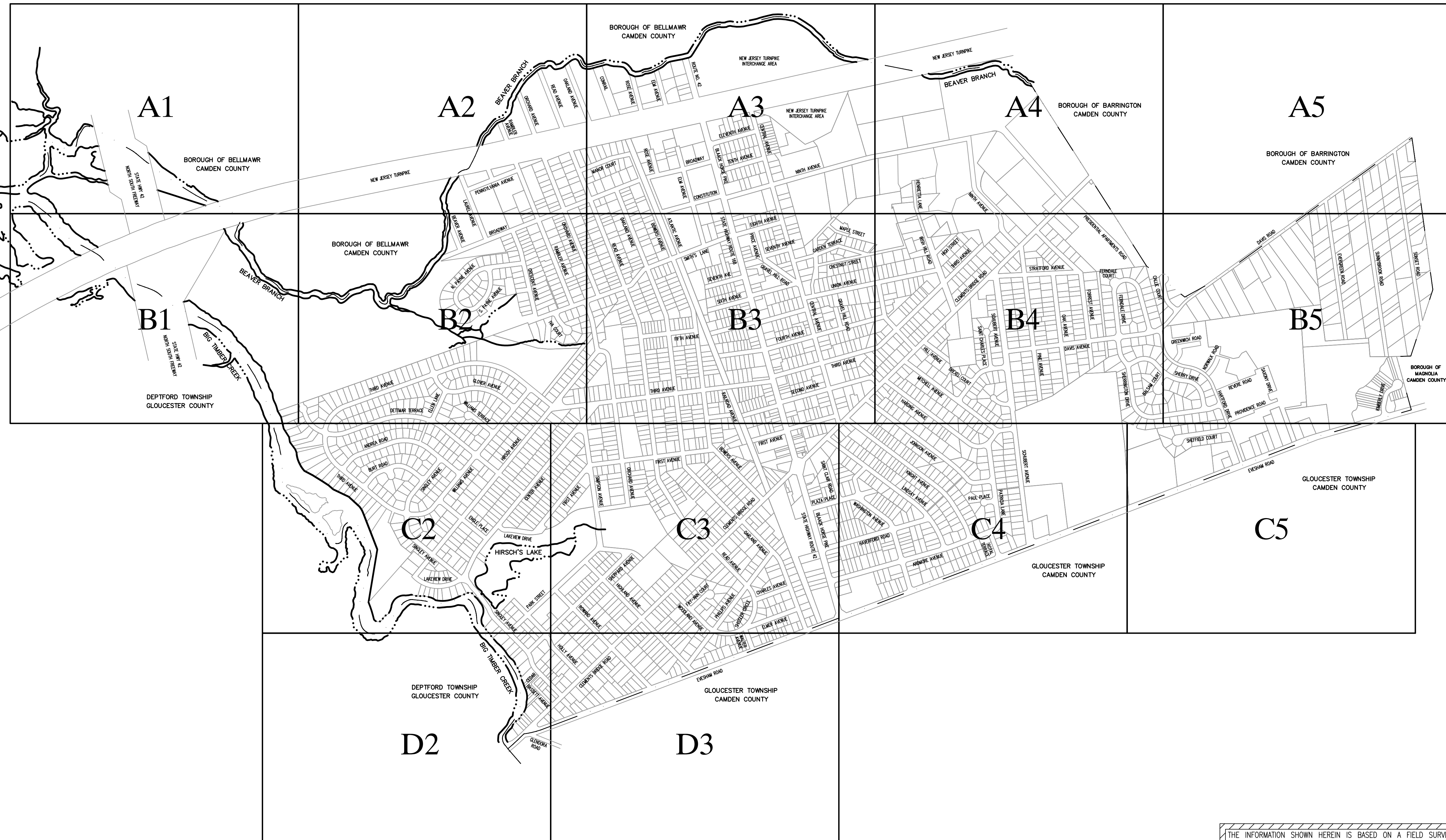
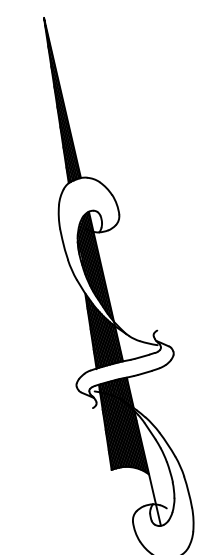
DRAWING TITLE:

**SEWER
DISTRIBUTION
SYSTEM**

JOB NO: RB2018-11	DESIGNED BY: -
DATE: 6/8/23	DRAWN BY: LML
SCALE: 1"=1000'	CHECKED BY: AFD

DRAWING NUMBER:

01



SANITARY SEWER DISTRIBUTION SYSTEM KEY MAP

SCALE: 1" = 600'



THE INFORMATION SHOWN HEREIN IS BASED ON A FIELD SURVEY COMPLETED BY BACH ASSOCIATES, PC UNDER THE SUPERVISION OF ANTHONY DIROSA, N.J.P.L.S. LICENSE No. 42570.

THE INFORMATION SHOWN HEREIN HAS BEEN LOCATED FROM FIELD SURVEY, RECORD PLANS, AND EXISTING DRAWINGS. THE SURVEYOR MAKES NO GUARANTEES THAT UNDERGROUND UTILITIES SHOWN COMPRISE ALL SUCH UTILITIES IN THE AREA, OR ARE SHOWN IN THE EXACT LOCATION AND DESCRIPTION INDICATED, ALTHOUGH HE DOES CERTIFY THAT THEY ARE LOCATED AS ACCURATELY AS POSSIBLE FROM THE INFORMATION AVAILABLE. THE SURVEYOR HAS NOT PHYSICALLY EXPOSED UNDERGROUND UTILITIES FOR LOCATION.

IT IS THE RESPONSIBILITY OF ALL PERSONS UTILIZING THIS PLAN AND THE INFORMATION CONTAINED HEREIN TO VERIFY LOCATIONS AND DESCRIPTIONS PRIOR TO THE COMMENCEMENT OF ANY RELATED WORK.



BACH Associates, PC
ENGINEERS • ARCHITECTS • PLANNERS

304 White Horse Pike
Haddon Heights, New Jersey 08035
Tel: 856-546-8611
Fax: 856-546-8612
www.BachDesignGroup.com



A1	A2	A3	A4	A5
B1	B2	B3	B4	B5
C2	C3	C4	C5	
D2	D3			

PROJECT:

SANITARY SEWER DISTRIBUTION SYSTEM

BOROUGH OF RUNNEMEDE
CAMDEN COUNTY, NEW JERSEY

ALL DOCUMENTS PREPARED BY BACH ASSOCIATES, PC ARE INSTRUMENTS OF SERVICE IN RESPECT OF THE PROJECT. THEY ARE NOT INTENDED OR REPRESENTED TO BE SUITABLE FOR REUSE BY OWNER OR OTHERS ON EXTENSIONS OF THE PROJECT OR ON ANY OTHER PROJECT. ANY REUSE WITHOUT WRITTEN VERIFICATION OR ADAPTATION BY BACH ASSOCIATES, PC FOR THE SPECIFIC PURPOSE INTENDED WILL BE AN OWNER'S SOLE RISK AND WITHOUT LIABILITY OR LEGAL EXPOSURE TO BACH ASSOCIATES, PC. OWNER SHALL INDEMNIFY AND HOLD HARMLESS BACH ASSOCIATES, PC FROM ALL CLAIMS, DAMAGES, LOSSES AND EXPENSES ARISING OUT OF OR RESULTING THEREFROM.

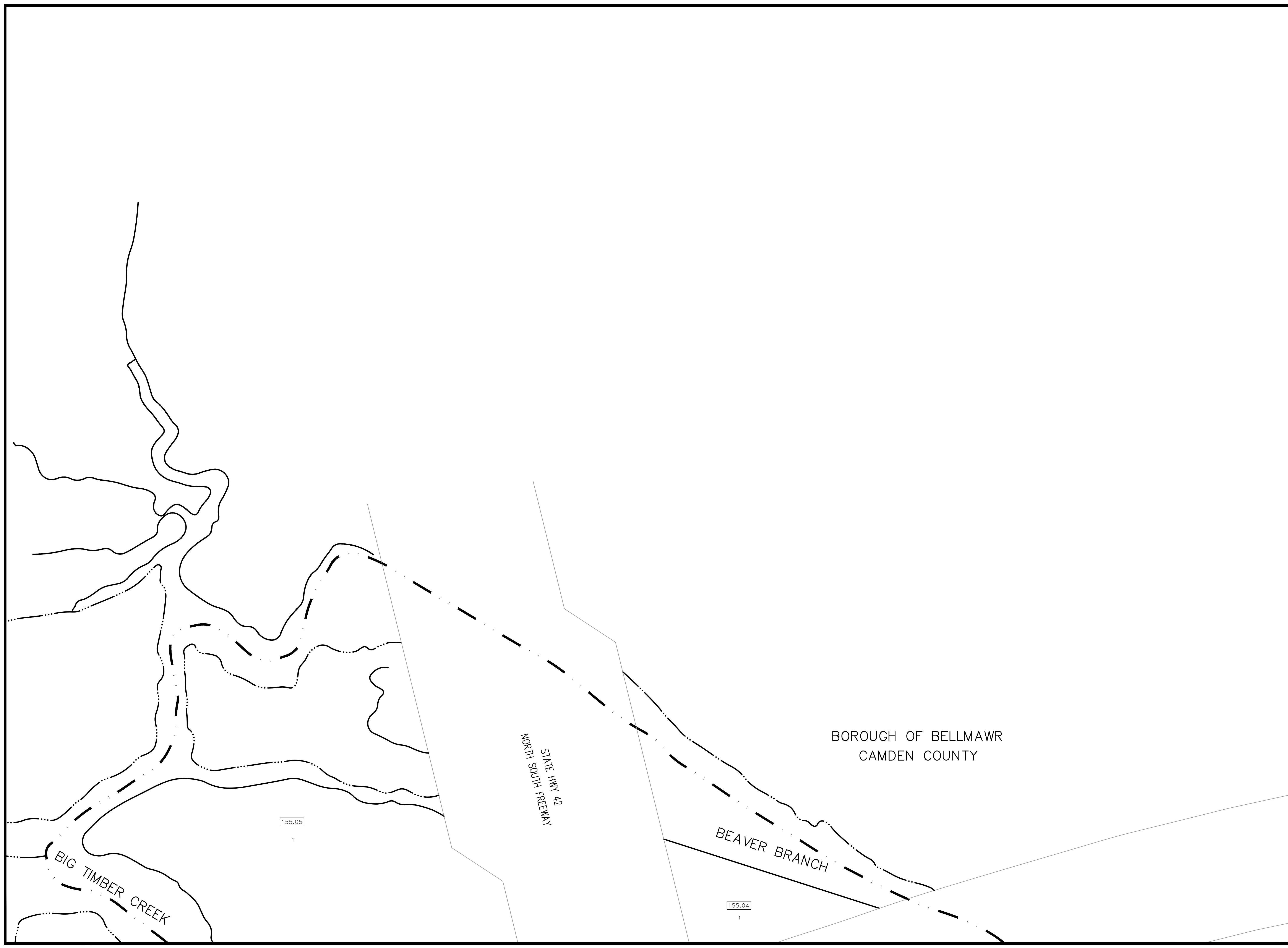
REVISIONS

NO.	DESCRIPTION	DATE

DRAWING TITLE:
SANITARY SEWER DISTRIBUTION SYSTEM

JOB NO: RB2018-11	DESIGNED BY:
DATE: 6/8/23	DRAWN BY: LML
SCALE: 1"=100'	CHECKED BY: AFD

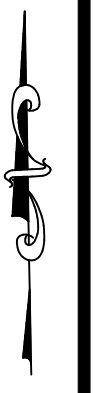
DRAWING NUMBER:
A1





BACH Associates, PC
ENGINEERS • ARCHITECTS • PLANNERS

304 White Horse Pike
Haddon Heights, New Jersey 08035
Tel: 856-546-8611
Fax: 856-546-8612
www.BachDesignGroup.com



A1	A2	A3	A4	A5
B1	B2	B3	B4	B5
C2	C3	C4	C5	
D2	D3			

PROJECT:

SANITARY SEWER DISTRIBUTION SYSTEM

BOROUGH OF RUNNEMEDE
CAMDEN COUNTY, NEW JERSEY

ALL DOCUMENTS PREPARED BY BACH ASSOCIATES, PC ARE INSTRUMENTS OF SERVICE IN RESPECT OF THE PROJECT. THEY ARE NOT INTENDED OR REPRESENTED TO BE SUITABLE FOR REUSE BY OWNER OR OTHERS ON EXTENSIONS OF THE PROJECT OR ON ANY OTHER PROJECT. ANY REUSE WITHOUT WRITTEN VERIFICATION OR ADAPTATION BY BACH ASSOCIATES, PC FOR THE SPECIFIC PURPOSE INTENDED WILL BE AT OWNER'S SOLE RISK AND WITHOUT LIABILITY OR LEGAL EXPOSURE TO BACH ASSOCIATES, PC. AND OWNER SHALL INDEMNIFY AND HOLD HARMLESS BACH ASSOCIATES, PC FROM ALL CLAIMS, DAMAGES, LOSSES AND EXPENSES ARISING OUT OF OR RESULTING THEREFROM.

REVISIONS		
NO.	DESCRIPTION	DATE

SANITARY SEWER DISTRIBUTION SYSTEM

JOB NO: RB2018-11	DESIGNED BY:
DATE: 6/8/23	DRAWN BY: LML
SCALE: 1"=100'	CHECKED BY: AFD

DRAWING NUMBER:
A2



BOROUGH OF BELLMAWR
CAMDEN COUNTY



BACH Associates, PC
ENGINEERS • ARCHITECTS • PLANNERS

304 White Horse Pike
Haddon Heights, New Jersey 08035
Tel: 856-546-8611
Fax: 856-546-8612

www.BachDesignGroup.com



A1	A2	A3	A4	A5
B1	B2	B3	B4	B5
C2	C3	C4	C5	
D2	D3			

PROJECT:

SANITARY SEWER DISTRIBUTION SYSTEM

BOROUGH OF RUNNEMEDA
CAMDEN COUNTY, NEW JERSEY

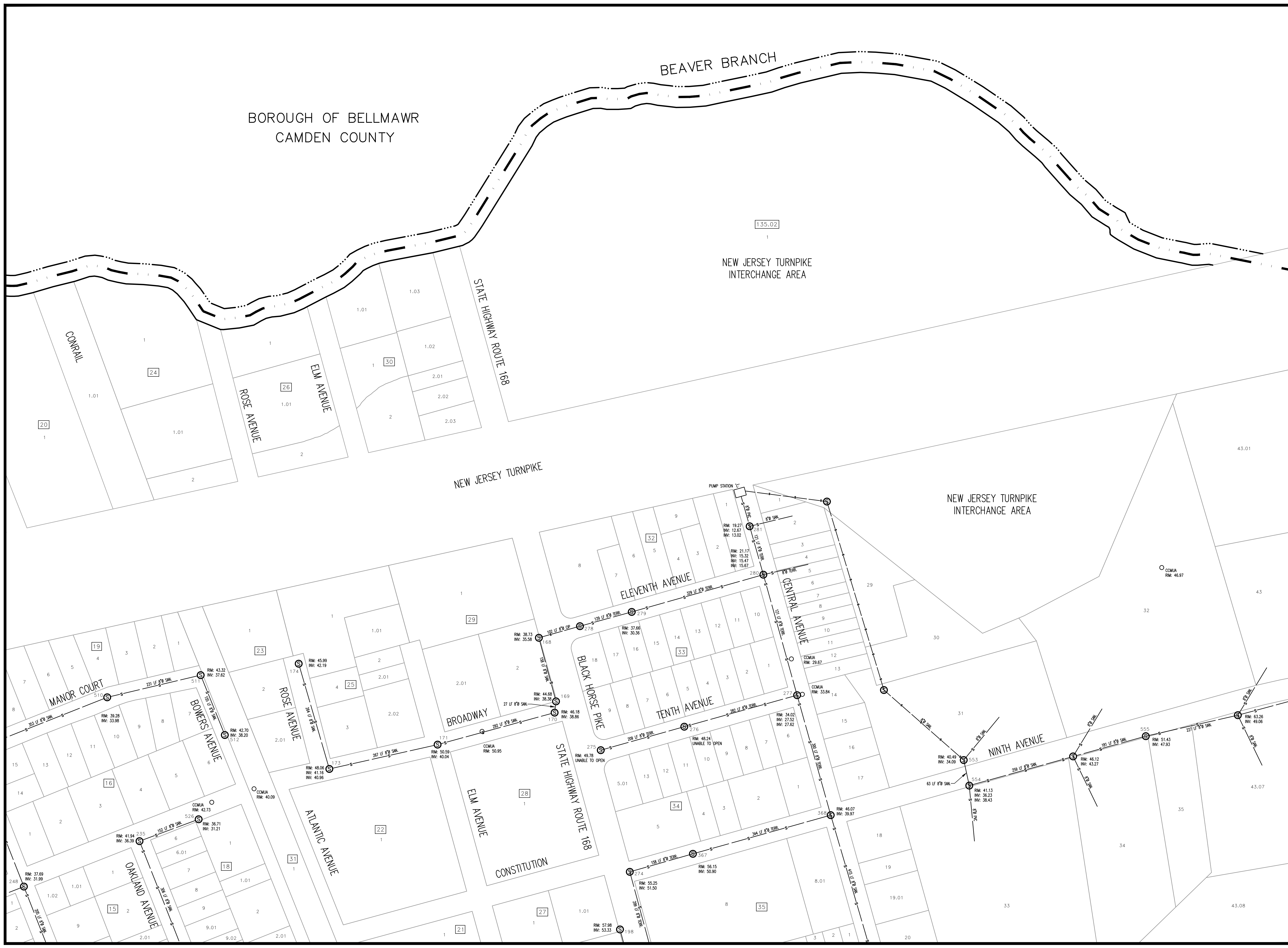
ALL DOCUMENTS PREPARED BY BACH ASSOCIATES, PC ARE INSTRUMENTS OF SERVICE IN RESPECT OF THE PROJECT. THEY ARE NOT INTENDED OR REPRESENTED TO BE SUITABLE FOR REUSE BY OWNER OR OTHERS ON EXTENSIONS OF THE PROJECT OR ON ANY OTHER PROJECT. ANY REUSE WITHOUT WRITTEN VERIFICATION OR ADAPTATION BY BACH ASSOCIATES, PC FOR THE SPECIFIC PURPOSE INTENDED WILL BE AT OWNER'S SOLE RISK AND WITHOUT LIABILITY OR LEGAL EXPOSURE TO BACH ASSOCIATES, PC. OWNER SHALL INDEMNIFY AND HOLD HARMLESS BACH ASSOCIATES, PC FROM ALL CLAIMS, DAMAGES, LOSSES AND EXPENSES ARISING OUT OF OR RESULTING THEREFROM.

REVISIONS		
NO.	DESCRIPTION	DATE

SANITARY SEWER DISTRIBUTION SYSTEM

JOB NO: RB2018-11	DESIGNED BY: LML
DATE: 6/8/23	DRAWN BY: LML
SCALE: 1"=100'	CHECKED BY: AFD

DRAWING NUMBER:
A3



BOROUGH OF BELLMAWR
CAMDEN COUNTY

BEAVER BRANCH

NEW JERSEY TURNPIKE
INTERCHANGE AREA

NEW JERSEY TURNPIKE
INTERCHANGE AREA

DRAWING NUMBER:
A3



BACH Associates, PC
ENGINEERS • ARCHITECTS • PLANNERS

304 White Horse Pike
Haddon Heights, New Jersey 08035
Tel: 856-546-8611
Fax: 856-546-8612

www.BachDesignGroup.com



A1	A2	A3	A4	A5
B1	B2	B3	B4	B5
C2	C3	C4	C5	
D2	D3			

PROJECT:

SANITARY SEWER DISTRIBUTION SYSTEM

BOROUGH OF RUNNEMEDE
CAMDEN COUNTY, NEW JERSEY

ALL DOCUMENTS PREPARED BY BACH ASSOCIATES, PC ARE INSTRUMENTS OF SERVICE IN RESPECT OF THE PROJECT. THEY ARE NOT INTENDED OR REPRESENTED TO BE SUITABLE FOR REUSE BY OWNER OR OTHERS ON EXTENSIONS OF THE PROJECT OR ON ANY OTHER PROJECT. ANY REUSE WITHOUT WRITTEN VERIFICATION OR ADAPTATION BY BACH ASSOCIATES, PC FOR THE SPECIFIC PURPOSE INTENDED WILL BE AT OWNER'S SOLE RISK AND WITHOUT LIABILITY OR LEGAL EXPOSURE TO BACH ASSOCIATES, PC. OWNER SHALL INDEMNIFY AND HOLD HARMLESS BACH ASSOCIATES, PC FROM ALL CLAIMS, DAMAGES, LOSSES AND EXPENSES ARISING OUT OF OR RESULTING THEREFROM.

REVISIONS

NO.	DESCRIPTION	DATE

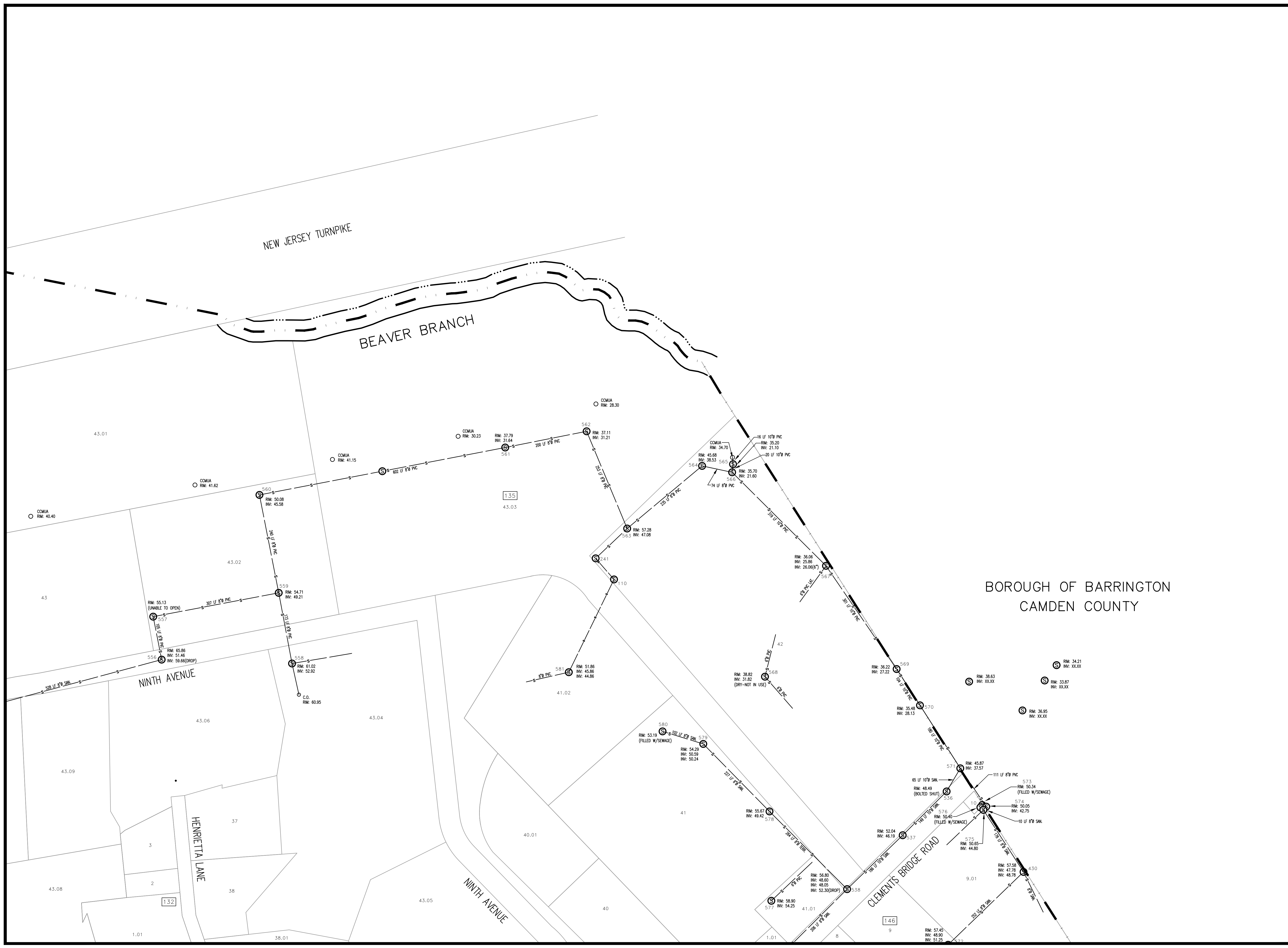
DRAWING TITLE:

SANITARY SEWER DISTRIBUTION SYSTEM

JOB NO: RB2018-11	DESIGNED BY:
DATE: 6/8/23	DRAWN BY: LML
SCALE: 1"=100'	CHECKED BY: AFD

DRAWING NUMBER:

A4





BACH Associates, PC
ENGINEERS • ARCHITECTS • PLANNERS

304 White Horse Pike
Haddon Heights, New Jersey 08035
Tel: 856-546-8611
Fax: 856-546-8612
www.BachDesignGroup.com



A1	A2	A3	A4	A5
B1	B2	B3	B4	B5
C2	C3	C4	C5	
D2	D3			

PROJECT:

SANITARY SEWER DISTRIBUTION SYSTEM

BOROUGH OF RUNNEMEDE
CAMDEN COUNTY, NEW JERSEY

ALL DOCUMENTS PREPARED BY BACH ASSOCIATES, PC ARE INSTRUMENTS OF SERVICE IN RESPECT OF THE PROJECT. THEY ARE NOT INTENDED OR REPRESENTED TO BE SUITABLE FOR REUSE BY OWNER OR OTHERS ON EXTENSIONS OF THE PROJECT OR ON ANY OTHER PROJECT. ANY REUSE WITHOUT WRITTEN VERIFICATION OR ADAPTATION BY BACH ASSOCIATES, PC FOR THE SPECIFIC PURPOSE INTENDED WILL BE AT OWNER'S SOLE RISK AND WITHOUT LIABILITY OF LEGAL EXPOSURE TO BACH ASSOCIATES, PC. AND OWNER SHALL INDEMNIFY AND HOLD HARMLESS BACH ASSOCIATES, PC FROM ALL CLAIMS, DAMAGES, LOSSES AND EXPENSES ARISING OUT OF OR RESULTING THEREFROM.

REVISIONS

NO.	DESCRIPTION	DATE

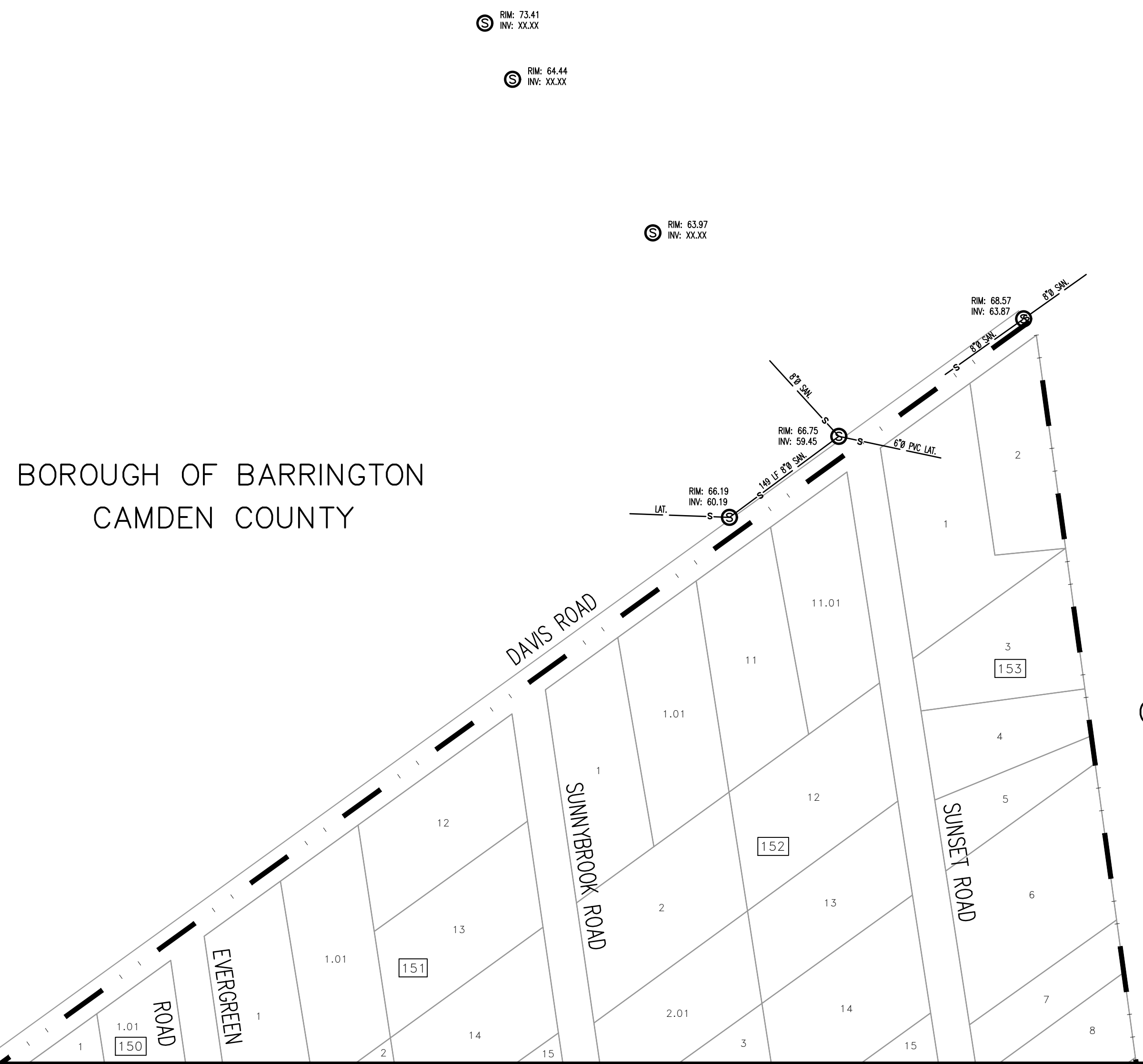
DRAWING TITLE:

SANITARY SEWER DISTRIBUTION SYSTEM

JOB NO: RB2018-11	DESIGNED BY:
DATE: 6/8/23	DRAWN BY: LML
SCALE: 1"=100'	CHECKED BY: AFD

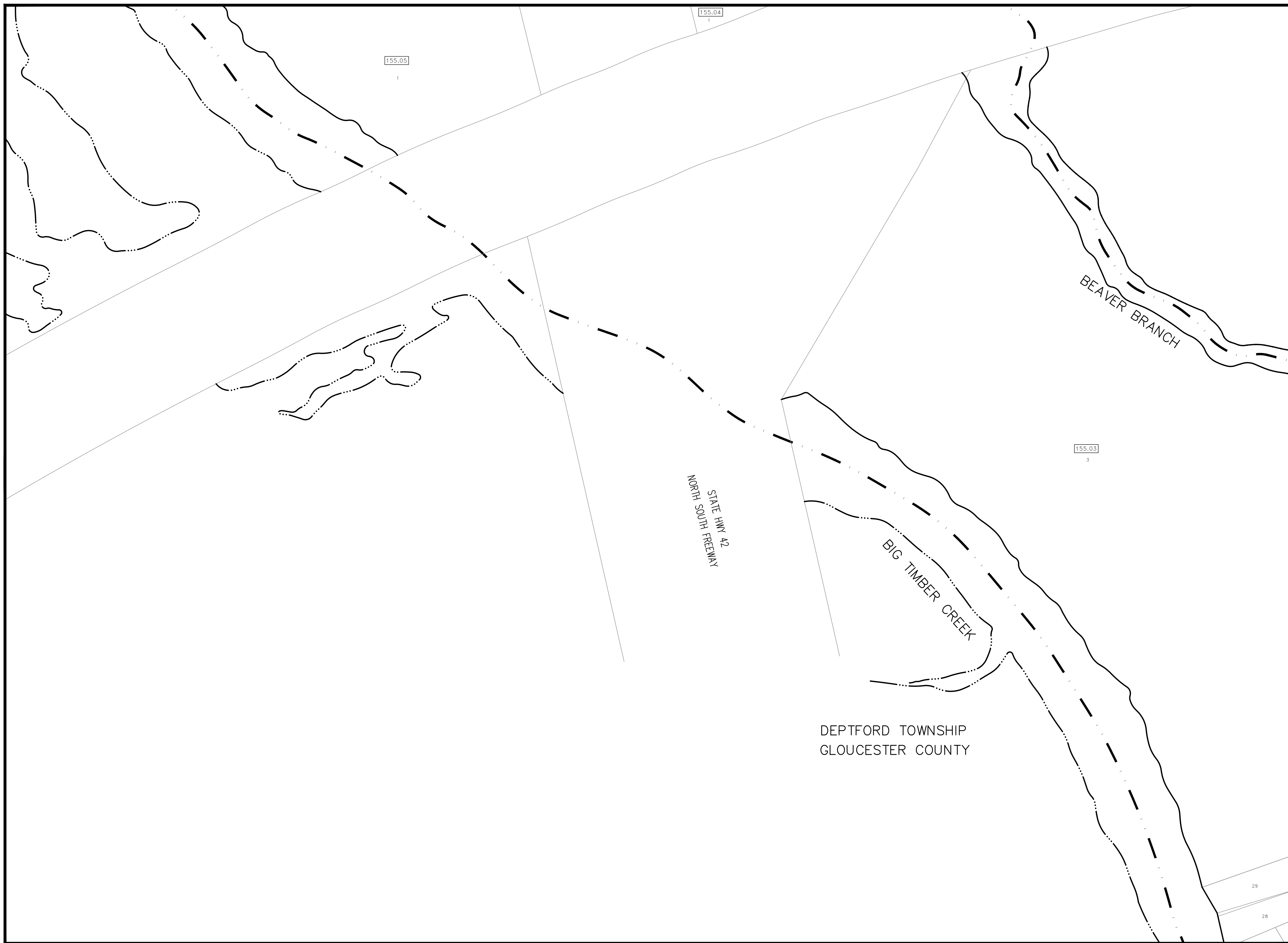
DRAWING NUMBER:

A5



BOROUGH OF BARRINGTON
CAMDEN COUNTY

BOROUGH OF
MAGNOLIA
CAMDEN COUNTY



BACH Associates, PC
ENGINEERS • ARCHITECTS • PLANNERS

304 White Horse Pike
Haddon Heights, New Jersey 08035
Tel: 856-546-8611
Fax: 856-546-8612
www.BachDesignGroup.com



A1	A2	A3	A4	A5
B1	B2	B3	B4	B5
C2	C3	C4	C5	
D2	D3			

PROJECT:

SANITARY SEWER DISTRIBUTION SYSTEM

BOROUGH OF RUNNEMEDE
CAMDEN COUNTY, NEW JERSEY

ALL DOCUMENTS PREPARED BY BACH ASSOCIATES, PC ARE INSTRUMENTS OF SERVICE IN RESPECT OF THE PROJECT. THEY ARE NOT INTENDED OR REPRESENTED TO BE SUITABLE FOR REUSE BY OWNER OR OTHERS ON EXTENSIONS OF THE PROJECT OR ON ANY OTHER PROJECT. ANY REUSE WITHOUT WRITTEN VERIFICATION OR ADAPTATION BY BACH ASSOCIATES, PC FOR THE SPECIFIC PURPOSE INTENDED WILL BE AT OWNER'S SOLE RISK AND WITHOUT LIABILITY OR LEGAL EXPOSURE TO BACH ASSOCIATES, PC. OWNER SHALL INDEMNIFY AND HOLD HARMLESS BACH ASSOCIATES, PC FROM ALL CLAIMS, DAMAGES, LOSSES AND EXPENSES ARISING OUT OF OR RESULTING THEREFROM.

REVISIONS		
NO.	DESCRIPTION	DATE

DRAWING TITLE:

SANITARY SEWER DISTRIBUTION SYSTEM

JOB NO: RB2018-11	DESIGNED BY:
DATE: 6/8/23	DRAWN BY: LML
SCALE: 1"=100'	CHECKED BY: AFD

DRAWING NUMBER:

B1

155.04
1

155.05
1

155.03
3

STATE HWY 42
NORTH SOUTH FREEWAY

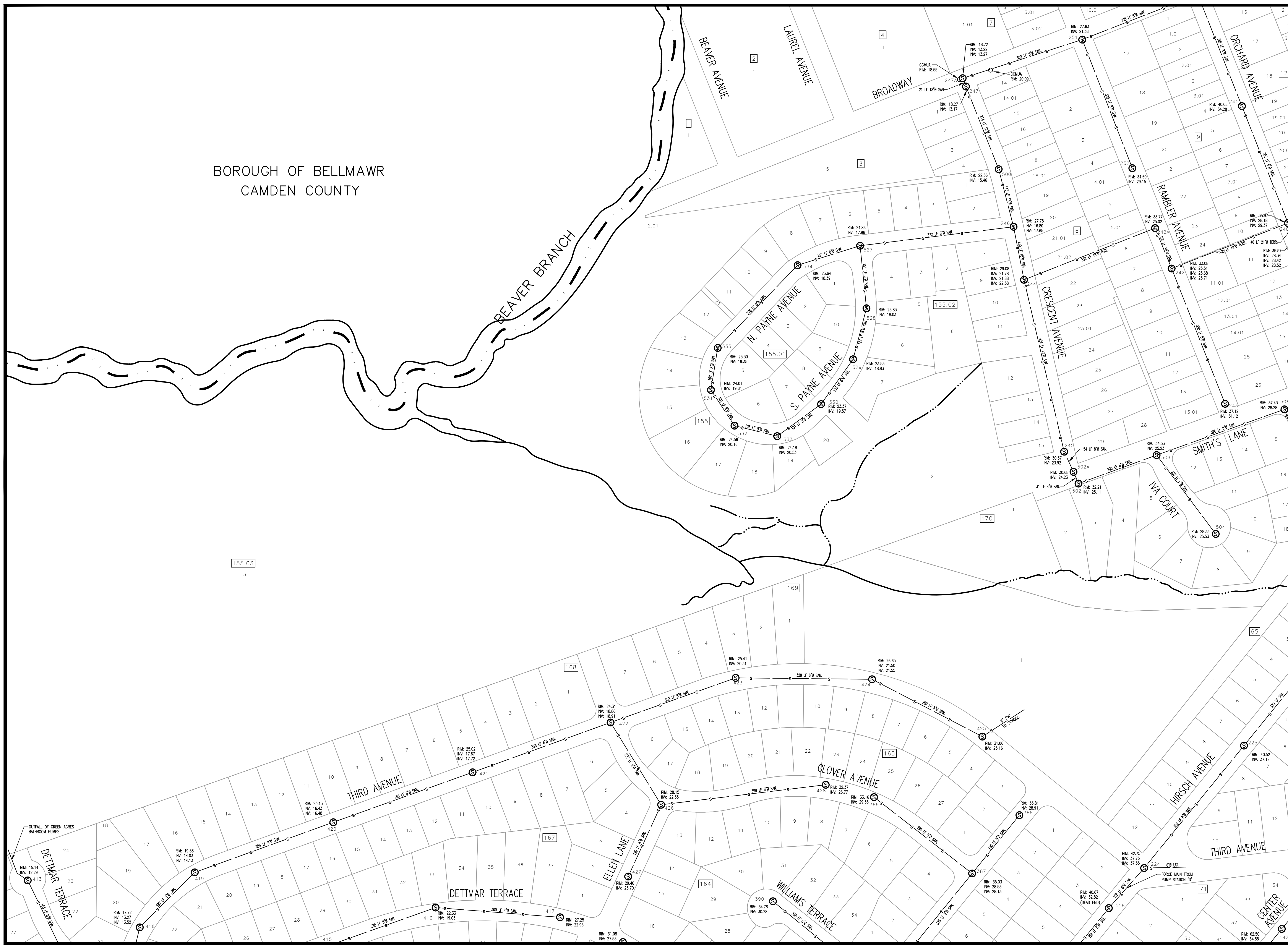
BIG TIMBER CREEK

BEAVER BRANCH

DEPTFORD TOWNSHIP
GLOUCESTER COUNTY

29

28



BOROUGH OF BELLMAWR
CAMDEN COUNTY



BACH Associates, PC
ENGINEERS • ARCHITECTS • PLANNERS

304 White Horse Pike
Haddon Heights, New Jersey 08035
Tel: 856-546-8611
Fax: 856-546-8612
www.BachDesignGroup.com

A1	A2	A3	A4	A5
B1	B2	B3	B4	B5
C2	C3	C4	C5	
D2	D3			

PROJECT:

SANITARY SEWER DISTRIBUTION SYSTEM

BOROUGH OF RUNNEMEDA
CAMDEN COUNTY, NEW JERSEY

ALL DOCUMENTS PREPARED BY BACH ASSOCIATES, PC ARE INSTRUMENTS OF SERVICE IN RESPECT OF THE PROJECT. THEY ARE NOT INTENDED OR REPRESENTED TO BE SUITABLE FOR REUSE BY OWNER OR OTHERS ON EXTENSIONS OF THE PROJECT OR ON ANY OTHER PROJECT. ANY REUSE WITHOUT WRITTEN VERIFICATION OR ADAPTATION BY BACH ASSOCIATES, PC FOR THE SPECIFIC PURPOSE INTENDED WILL BE AT OWNER'S SOLE RISK AND WITHOUT LIABILITY OR LEGAL EXPOSURE TO BACH ASSOCIATES, PC. OWNER SHALL INDEMNIFY AND HOLD HARMLESS BACH ASSOCIATES, PC FROM ALL CLAIMS, DAMAGES, LOSSES AND EXPENSES ARISING OUT OF OR RESULTING THEREFROM.

REVISIONS		
NO.	DESCRIPTION	DATE

DRAWING TITLE:
SANITARY SEWER DISTRIBUTION SYSTEM

JOB NO: RB2018-11
DATE: 6/8/23
SCALE: 1"=100'
DRAWING NUMBER:

DESIGNED BY: LML
DRAWN BY: LML
CHECKED BY: AFD

B2



BACH Associates, PC
ENGINEERS • ARCHITECTS • PLANNERS

304 White Horse Pike
Haddon Heights, New Jersey 08035

Tel: 856-546-8611
Fax: 856-546-8612

www.BachDesignGroup.com

A1	A2	A3	A4	A5
B1	B2	B3	B4	B5
C2	C3	C4	C5	
D2	D3			

PROJECT:

SANITARY SEWER DISTRIBUTION SYSTEM

BOROUGH OF RUNNEMEDE
CAMDEN COUNTY, NEW JERSEY

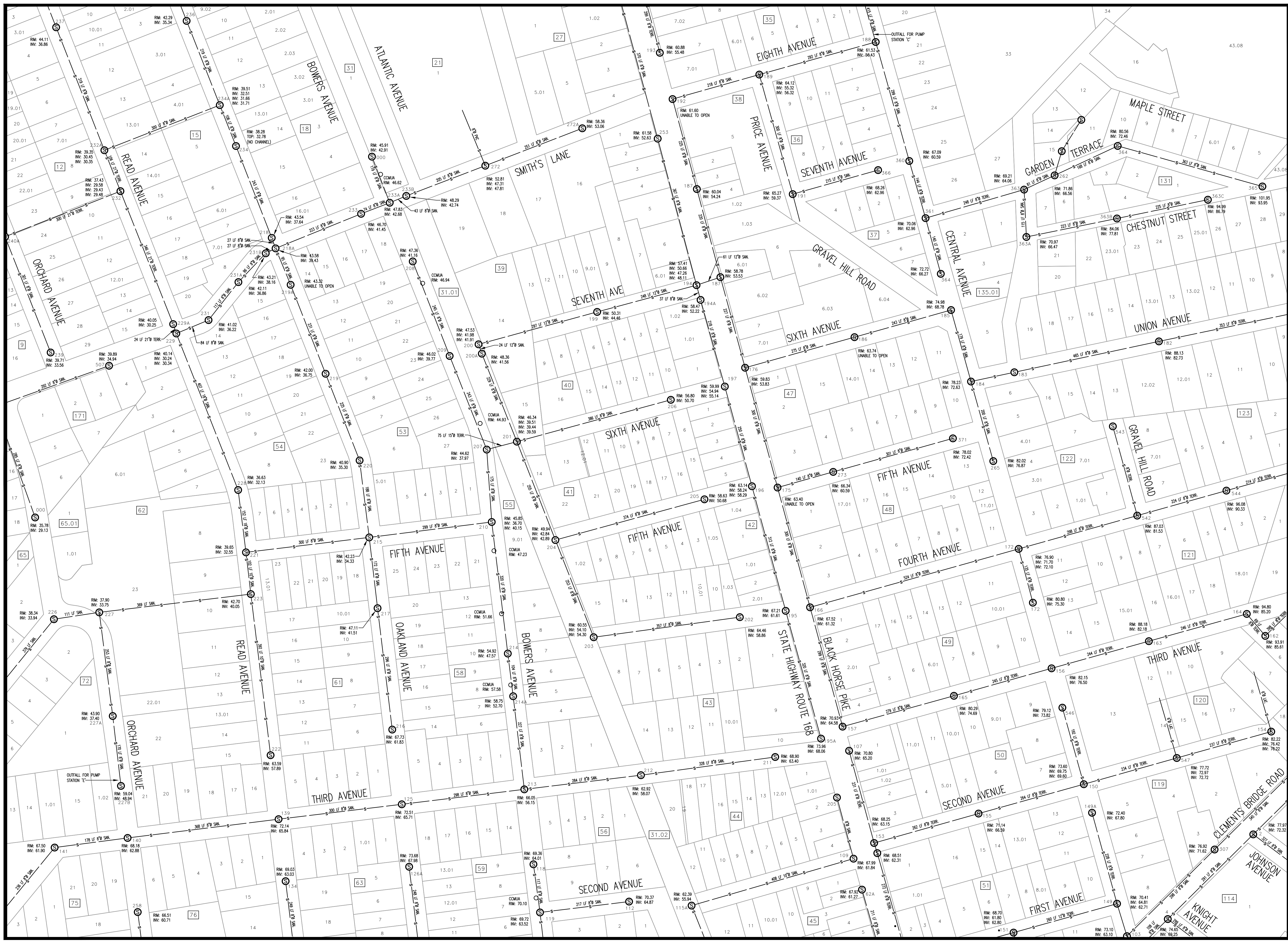
ALL DOCUMENTS PREPARED BY BACH ASSOCIATES, PC ARE INSTRUMENTS OF SERVICE IN RESPECT OF THE PROJECT. THEY ARE NOT INTENDED OR REPRESENTED TO BE SUITABLE FOR REUSE BY OWNER OR OTHERS ON EXTENSIONS OF THE PROJECT OR ON ANY OTHER PROJECT. ANY REUSE WITHOUT WRITTEN VERIFICATION OR ADAPTATION BY BACH ASSOCIATES, PC FOR THE SPECIFIC PURPOSE INTENDED WILL BE AT USER'S SOLE RISK AND WITHOUT LIABILITY OR LEGAL EXPOSURE TO BACH ASSOCIATES, PC. AND OWNER SHALL INDEMNIFY AND HOLD HARMLESS BACH ASSOCIATES, PC FROM ALL CLAIMS, DAMAGES, LOSSES AND EXPENSES ARISING OUT OF OR RESULTING THEREFROM.

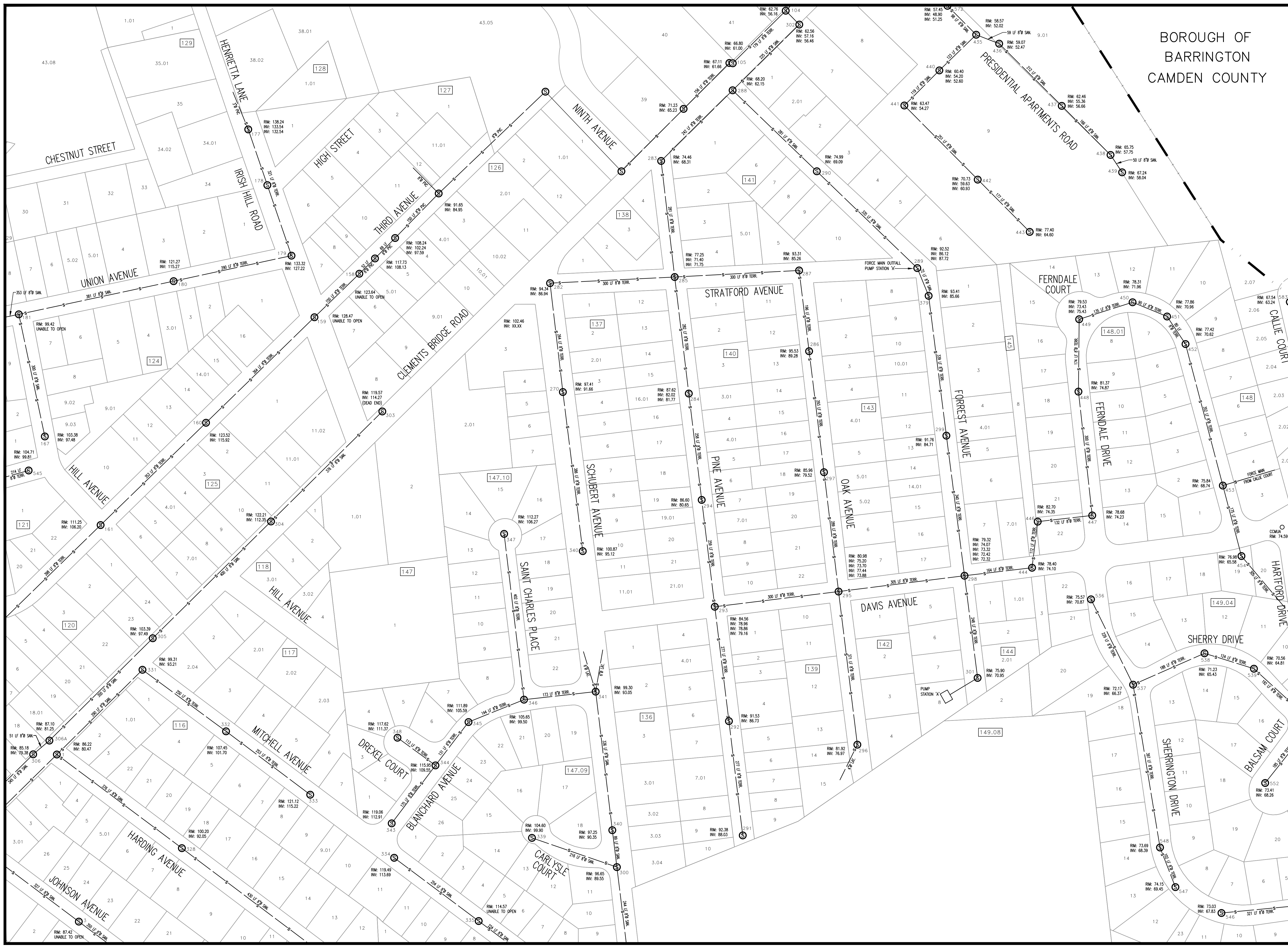
REVISIONS		
NO.	DESCRIPTION	DATE

SANITARY SEWER DISTRIBUTION SYSTEM

JOB NO: RB2018-11	DESIGNED BY: LML
DATE: 6/8/23	DRAWN BY: LML
SCALE: 1"=100'	CHECKED BY: AFD
DRAWING NUMBER:	

B3





BOROUGH OF
BARRINGTON
CAMDEN COUNTY



BACH Associates, PC
ENGINEERS • ARCHITECTS • PLANNERS

304 White Horse Pike
Haddon Heights, New Jersey 08035
Tel: 856-546-8611
Fax: 856-546-8612
www.BachDesignGroup.com

A1	A2	A3	A4	A5
B1	B2	B3	B4	B5
C2	C3	C4	C5	
D2	D3			

PROJECT:

SANITARY SEWER DISTRIBUTION SYSTEM

BOROUGH OF RUNNEMED
CAMDEN COUNTY, NEW JERSEY

ALL DOCUMENTS PREPARED BY BACH ASSOCIATES, PC ARE INSTRUMENTS OF SERVICE IN RESPECT OF THE PROJECT. THEY ARE NOT INTENDED OR REPRESENTED TO BE SUITABLE FOR REUSE BY OWNER OR OTHERS ON EXTENSIONS OF THE PROJECT OR ON ANY OTHER PROJECT. ANY REUSE WITHOUT WRITTEN VERIFICATION OR ADAPTATION BY BACH ASSOCIATES, PC FOR THE SPECIFIC PURPOSE INTENDED WILL BE AT OWNERS' SOLE RISK AND WITHOUT LIABILITY OR LEGAL EXPOSURE TO BACH ASSOCIATES, PC. AND OWNER SHALL INDEMNIFY AND HOLD HARMLESS BACH ASSOCIATES, PC FROM ALL CLAIMS, DAMAGES, LOSSES AND EXPENSES ARISING OUT OF OR RESULTING THEREFROM.

REVISIONS		
NO.	DESCRIPTION	DATE

DRAWING TITLE:
SANITARY SEWER DISTRIBUTION SYSTEM

JOB NO:
RB2018-11

DESIGNED BY:
LML

DATE:
6/8/23

DRAWN BY:
LML

SCALE:
1"=100'

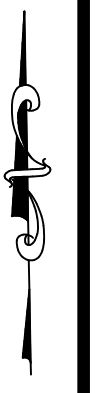
CHECKED BY:
AFD

DRAWING NUMBER:
B4



BACH Associates, PC
ENGINEERS • ARCHITECTS • PLANNERS

304 White Horse Pike
Haddon Heights, New Jersey 08035
Tel: 856-546-8611
Fax: 856-546-8612
www.BachDesignGroup.com



A1	A2	A3	A4	A5
B1	B2	B3	B4	B5
C2	C3	C4	C5	
D2	D3			

PROJECT:

SANITARY SEWER DISTRIBUTION SYSTEM

BOROUGH OF RUNNEMEDE
CAMDEN COUNTY, NEW JERSEY

ALL DOCUMENTS PREPARED BY BACH ASSOCIATES, PC ARE INSTRUMENTS OF SERVICE IN RESPECT OF THE PROJECT. THEY ARE NOT INTENDED OR REPRESENTED TO BE SUITABLE FOR REUSE BY OWNER OR OTHERS ON EXTENSIONS OF THE PROJECT OR ON ANY OTHER PROJECT. ANY REUSE WITHOUT WRITTEN VERIFICATION OR ADAPTATION BY BACH ASSOCIATES, PC FOR THE SPECIFIC PURPOSE INTENDED WILL BE AT OWNER'S SOLE RISK AND WITHOUT LIABILITY OR LEGAL EXPOSURE TO BACH ASSOCIATES, PC. OWNER SHALL INDEMNIFY AND HOLD HARMLESS BACH ASSOCIATES, PC FROM ALL CLAIMS, DAMAGES, LOSSES AND EXPENSES ARISING OUT OF OR RESULTING THEREFROM.

REVISIONS

NO.	DESCRIPTION	DATE

DRAWING TITLE:

SANITARY SEWER DISTRIBUTION SYSTEM

JOB NO:

RB2018-11

DESIGNED BY:

LML

DATE:

6/8/23

DRAWN BY:

LML

SCALE:

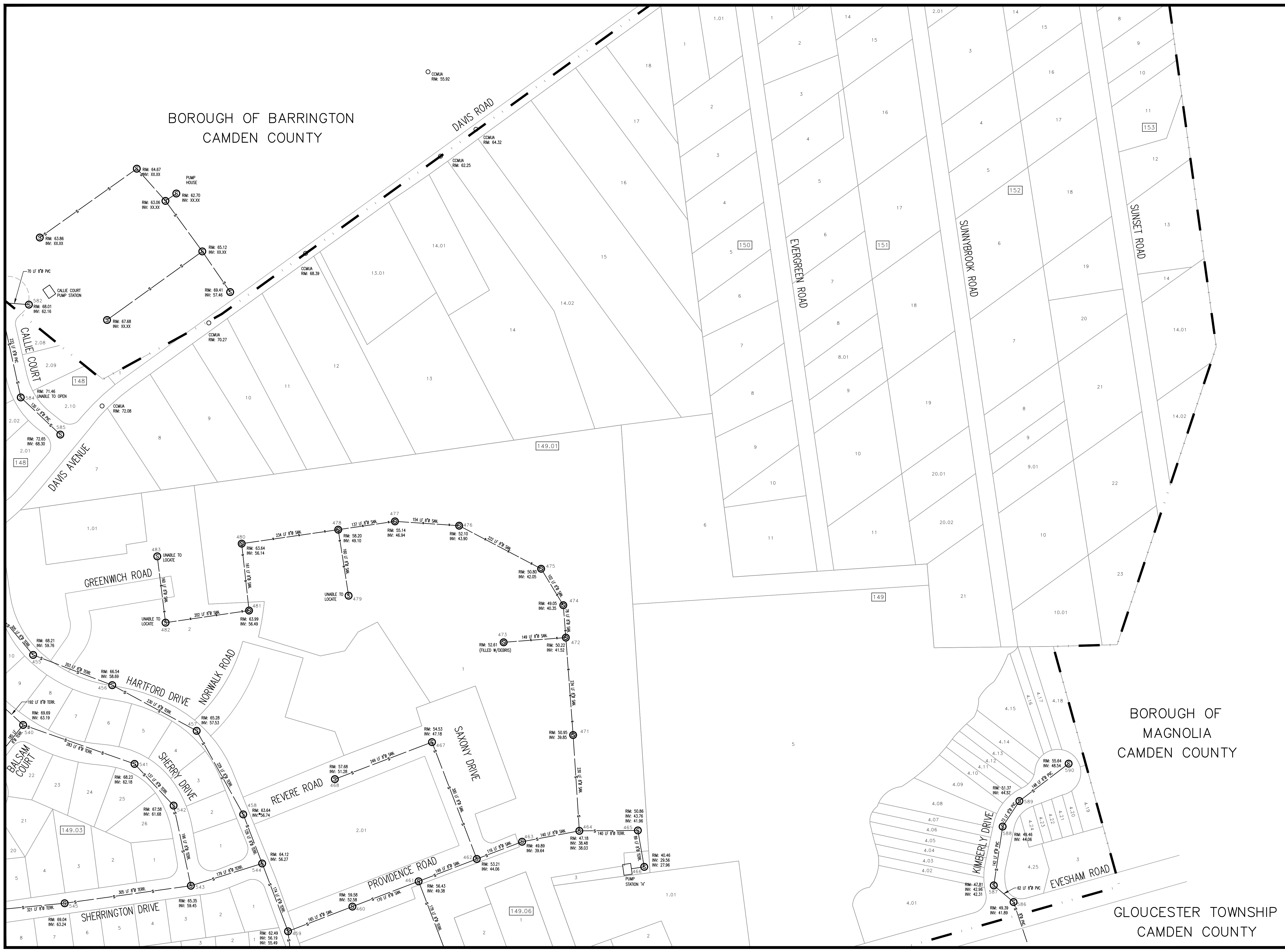
1"=100'

CHECKED BY:

AFD

DRAWING NUMBER:

B5



BOROUGH OF BARRINGTON
CAMDEN COUNTY

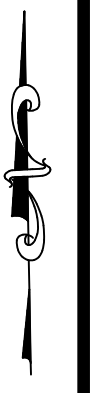
BOROUGH OF
MAGNOLIA
CAMDEN COUNTY

GLOUCESTER TOWNSHIP
CAMDEN COUNTY



BACH Associates, PC
ENGINEERS • ARCHITECTS • PLANNERS

304 White Horse Pike
Haddon Heights, New Jersey 08035
Tel: 856-546-8611
Fax: 856-546-8612
www.BachDesignGroup.com



A1	A2	A3	A4	A5
B1	B2	B3	B4	B5
C2	C3	C4	C5	
D2	D3			

PROJECT:

SANITARY SEWER DISTRIBUTION SYSTEM

BOROUGH OF RUNNEMEDA
CAMDEN COUNTY, NEW JERSEY

ALL DOCUMENTS PREPARED BY BACH ASSOCIATES, PC ARE INSTRUMENTS OF SERVICE IN RESPECT OF THE PROJECT. THEY ARE NOT INTENDED OR REPRESENTED TO BE SUITABLE FOR REUSE BY OWNER OR OTHERS ON EXTENSIONS OF THE PROJECT OR ON ANY OTHER PROJECT. ANY REUSE WITHOUT WRITTEN VERIFICATION OR ADAPTATION BY BACH ASSOCIATES, PC FOR THE SPECIFIC PURPOSES INTENDED WILL BE AN OWNER'S SOLE RISK AND WITHOUT LIABILITY OR LEGAL EXPOSURE TO BACH ASSOCIATES, PC. OWNER SHALL INDEMNIFY AND HOLD HARMLESS BACH ASSOCIATES, PC FROM ALL CLAIMS, DAMAGES, LOSSES AND EXPENSES ARISING OUT OF OR RESULTING THEREFROM.

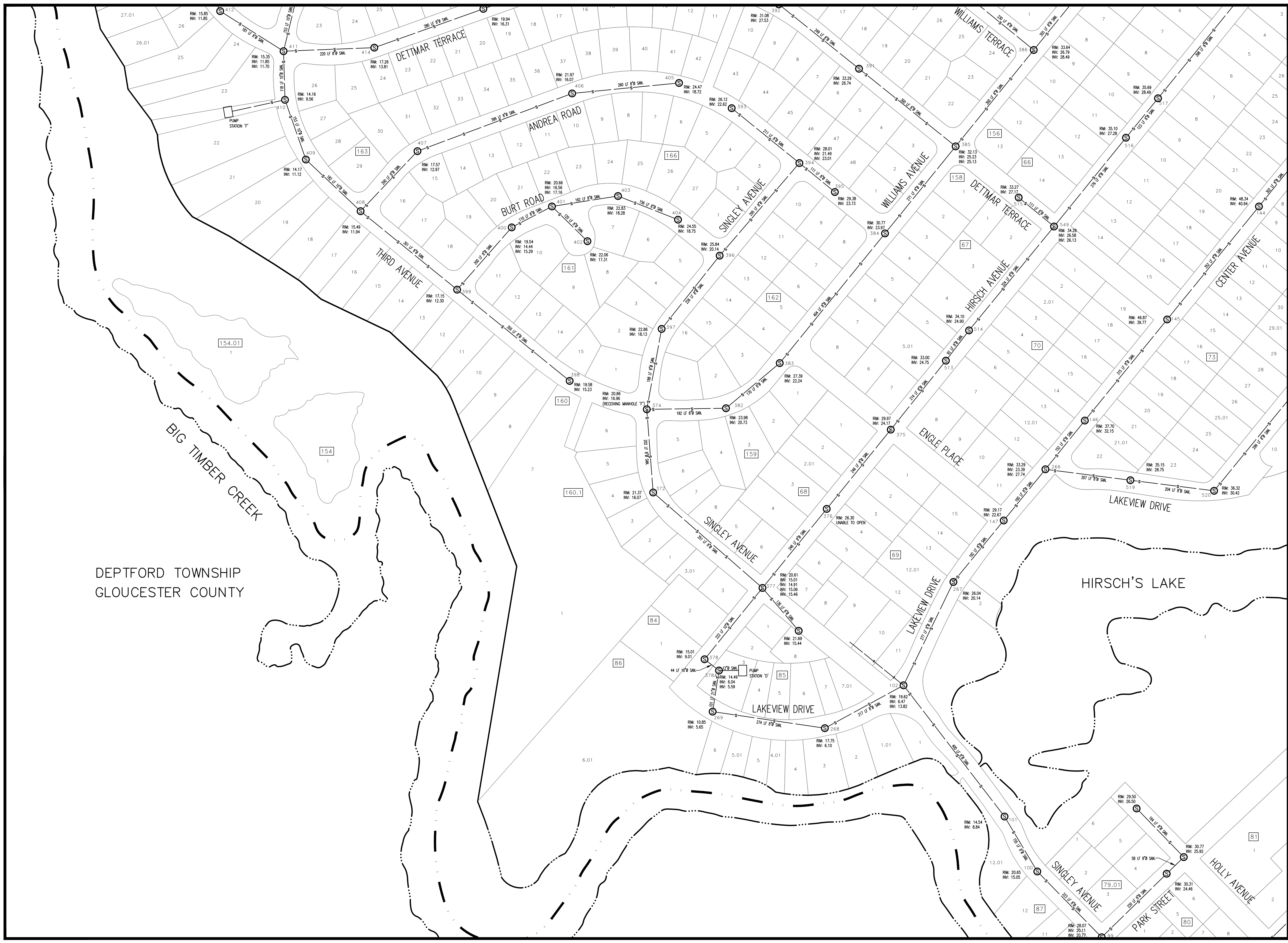
REVISIONS		
NO.	DESCRIPTION	DATE

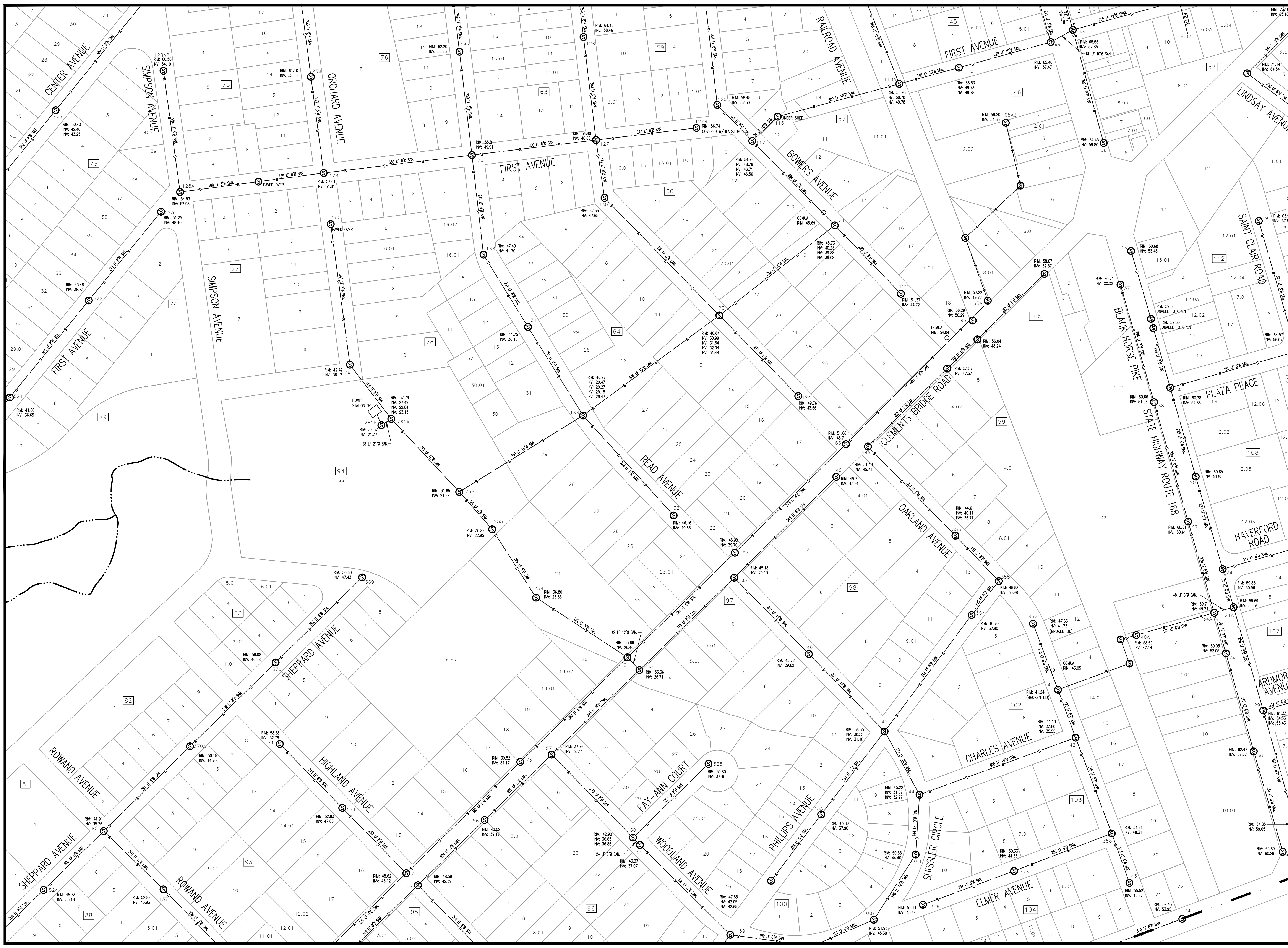
DRAWING TITLE:
SANITARY SEWER DISTRIBUTION SYSTEM

JOB NO: RB2018-11	DESIGNED BY:
DATE: 6/8/23	DRAWN BY: LML
SCALE: 1"=100'	CHECKED BY: AFD

DRAWING NUMBER:

C2





BACH Associates, PC
ENGINEERS • ARCHITECTS • PLANNERS

304 White Horse Pike
Haddon Heights, New Jersey 08035
Tel: 856-546-8611
Fax: 856-546-8612
www.BachDesignGroup.com

A1	A2	A3	A4	A5
B1	B2	B3	B4	B5
C2	C3	C4	C5	
D2	D3			

SANITARY SEWER DISTRIBUTION SYSTEM

BOROUGH OF RUNNEMEDA
CAMDEN COUNTY, NEW JERSEY

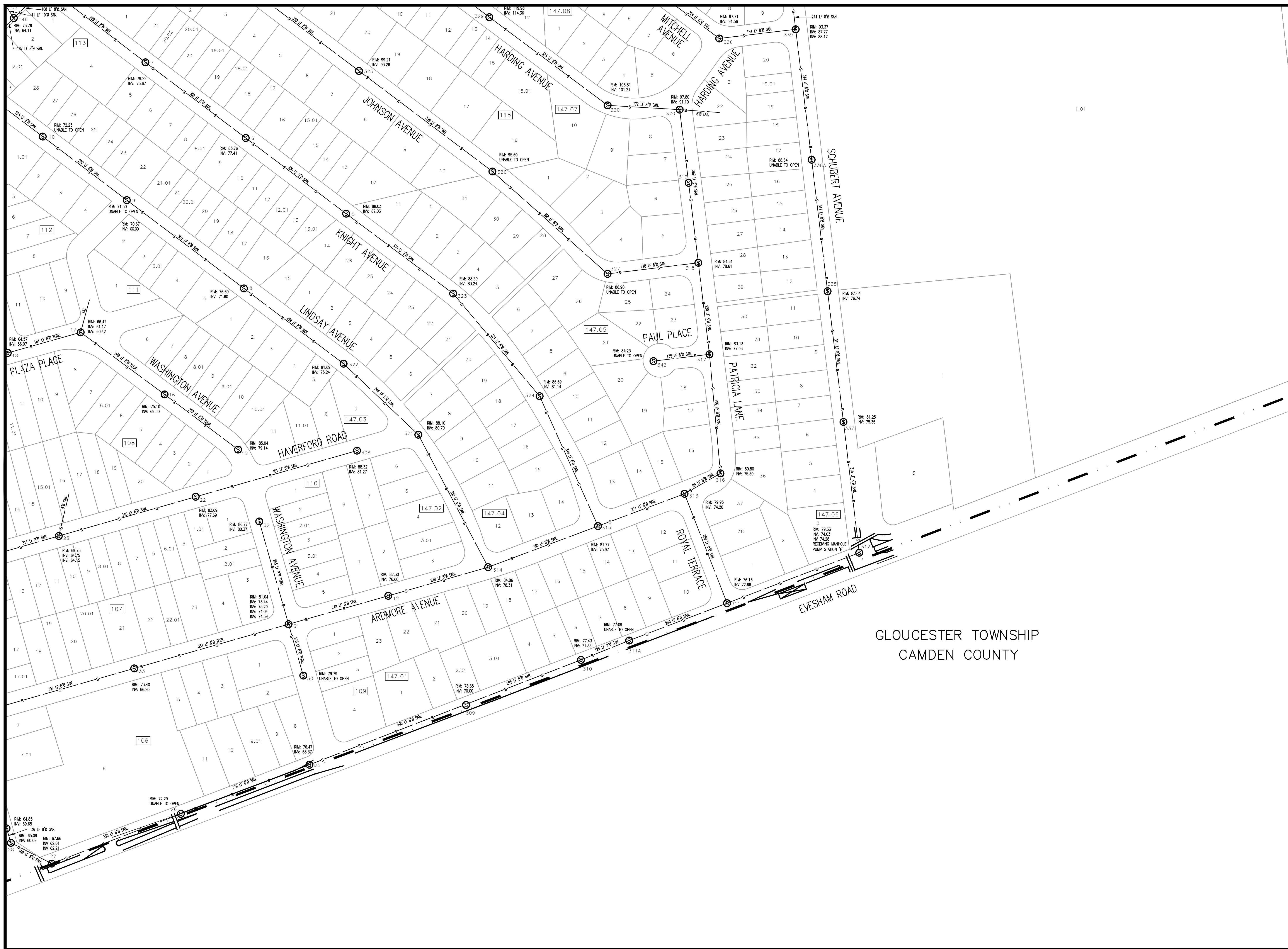
ALL DOCUMENTS PREPARED BY BACH ASSOCIATES, PC ARE INSTRUMENTS OF SERVICE IN RESPECT OF THE PROJECT. THEY ARE NOT INTENDED OR REPRESENTED TO BE SUITABLE FOR REUSE BY OWNER OR OTHERS ON EXTENSIONS OF THE PROJECT OR ON ANY OTHER PROJECT. ANY REUSE WITHOUT WRITTEN VERIFICATION OR ADAPTATION BY BACH ASSOCIATES, PC FOR THE SPECIFIC PURPOSE INTENDED WILL BE AT OWNER'S SOLE RISK AND WITHOUT LIABILITY OR LEGAL EXPOSURE TO BACH ASSOCIATES, PC. OWNER SHALL INDEMNIFY AND HOLD HARMLESS BACH ASSOCIATES, PC FROM ALL CLAIMS, DAMAGES, LOSSES AND EXPENSES ARISING OUT OF OR RESULTING THEREFROM.

REVISIONS		
NO.	DESCRIPTION	DATE

DRAWING TITLE:
SANITARY SEWER DISTRIBUTION SYSTEM

JOB NO: RB2018-11
DESIGNED BY: LML
DATE: 6/8/23
DRAWN BY: LML
SCALE: 1"=100'
CHECKED BY: AFD

DRAWING NUMBER:
C3



GLoucester TOWNSHIP
CAMDEN COUNTY



BACH Associates, PC
ENGINEERS • ARCHITECTS • PLANNERS

304 White Horse Pike
Haddon Heights, New Jersey 08035
Tel: 856-546-8611
Fax: 856-546-8612
www.BachDesignGroup.com



A1	A2	A3	A4	A5
B1	B2	B3	B4	B5
C2	C3	C4	C5	
D2	D3			

PROJECT:

SANITARY SEWER DISTRIBUTION SYSTEM

BOROUGH OF RUNNEMED
CAMDEN COUNTY, NEW JERSEY

ALL DOCUMENTS PREPARED BY BACH ASSOCIATES, PC ARE INSTRUMENTS OF SERVICE IN RESPECT OF THE PROJECT. THEY ARE NOT INTENDED OR REPRESENTED TO BE SUITABLE FOR REUSE BY OWNER OR OTHERS ON EXTENSIONS OF THE PROJECT OR ON ANY OTHER PROJECT. ANY REUSE WITHOUT WRITTEN VERIFICATION OR ADAPTATION BY BACH ASSOCIATES, PC FOR THE SPECIFIC PURPOSE INTENDED WILL BE AT OWNER'S SOLE RISK AND WITHOUT LIABILITY OR LEGAL EXPOSURE TO BACH ASSOCIATES, PC. AND OWNER SHALL INDEMNIFY AND HOLD HARMLESS BACH ASSOCIATES, PC FROM ALL CLAIMS, DAMAGES, LOSSES AND EXPENSES ARISING OUT OF OR RESULTING THEREFROM.

REVISIONS

NO.	DESCRIPTION	DATE

DRAWING TITLE:

SANITARY SEWER DISTRIBUTION SYSTEM

JOB NO:
RB2018-11

DESIGNED BY:

DATE:
6/8/23

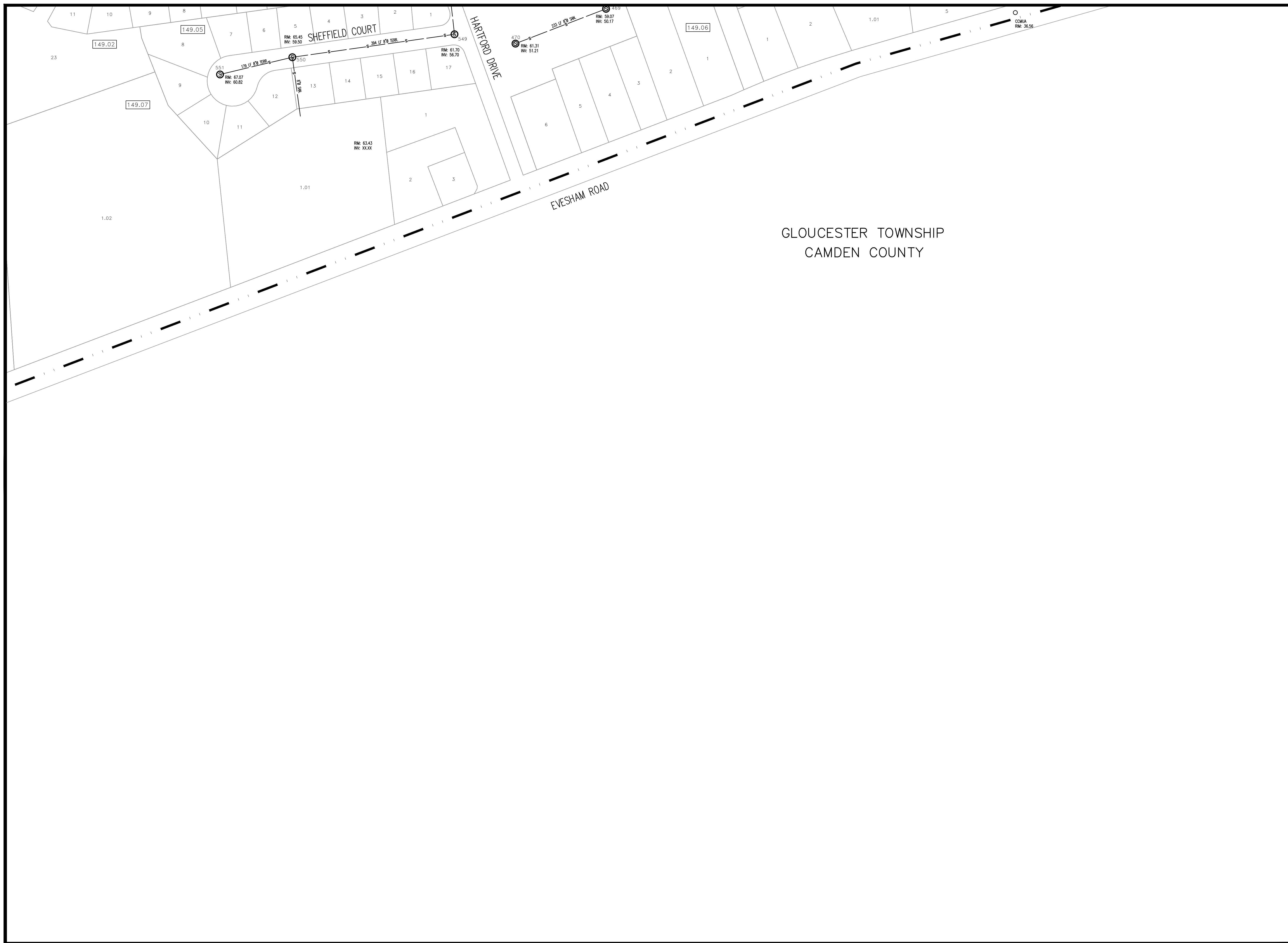
DRAWN BY:
LML

SCALE:
1"=100'

CHECKED BY:
AFD

DRAWING NUMBER:

C4



GLOUCESTER TOWNSHIP
CAMDEN COUNTY



BACH Associates, PC
ENGINEERS • ARCHITECTS • PLANNERS

304 White Horse Pike
Haddon Heights, New Jersey 08035
Tel: 856-546-8611
Fax: 856-546-8612
www.BachDesignGroup.com



A1	A2	A3	A4	A5
B1	B2	B3	B4	B5
C2	C3	C4	C5	
D2	D3			

PROJECT:

SANITARY SEWER DISTRIBUTION SYSTEM

BOROUGH OF RUNNEMEDE
CAMDEN COUNTY, NEW JERSEY

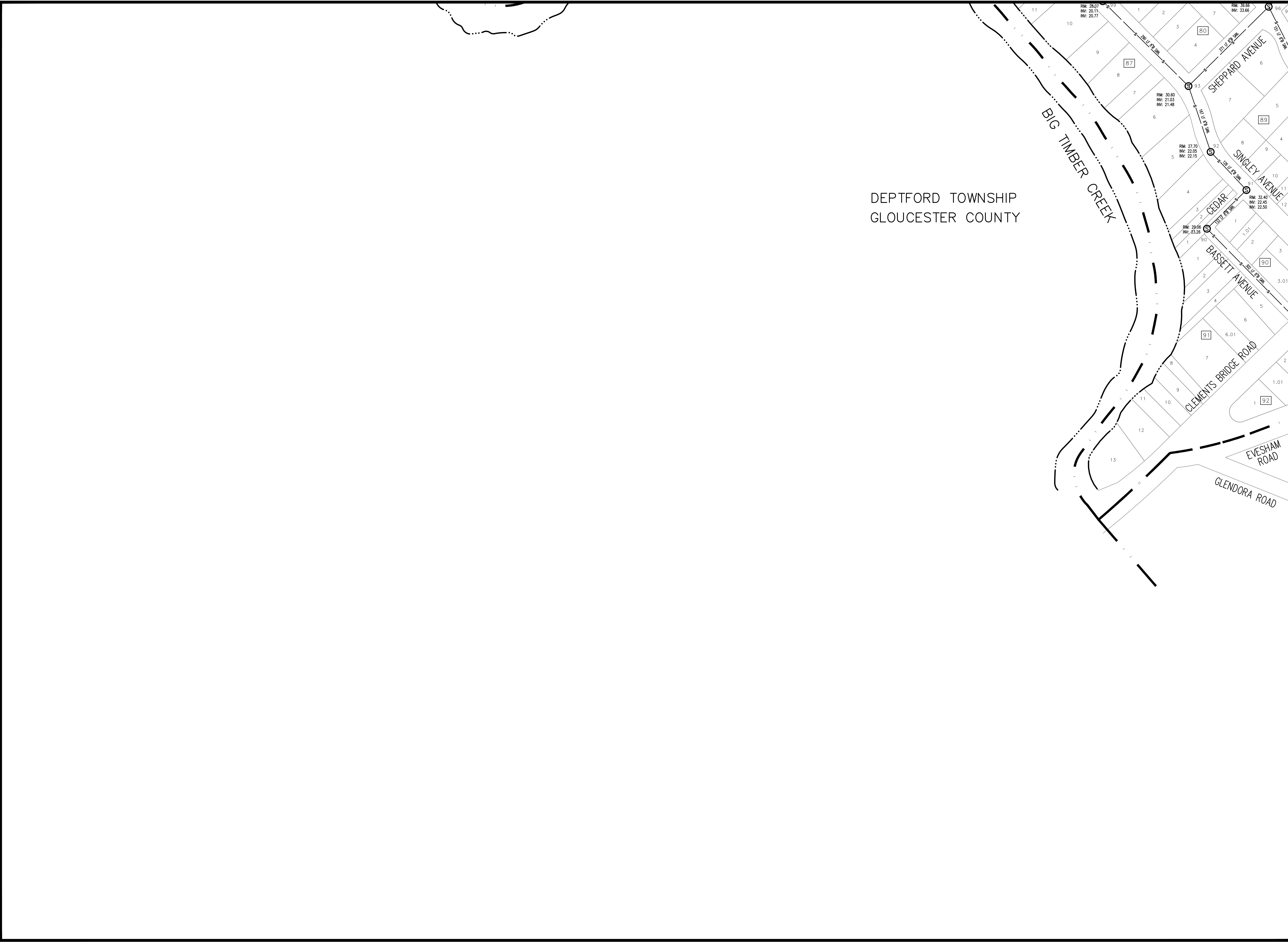
ALL DOCUMENTS PREPARED BY BACH ASSOCIATES, PC ARE INSTRUMENTS OF SERVICE IN RESPECT OF THE PROJECT. THEY ARE NOT INTENDED OR REPRESENTED TO BE SUITABLE FOR REUSE BY OWNER OR OTHERS OR EXTENSIONS OF THE PROJECT OR ON ANY OTHER PROJECT. ANY REUSE WITHOUT WRITTEN VERIFICATION OR ADAPTATION BY BACH ASSOCIATES, PC FOR THE SPECIFIC PURPOSE INTENDED WILL BE AT OWNER'S SOLE RISK AND WITHOUT LIABILITY OR LEGAL EXPOSURE TO BACH ASSOCIATES, PC. OWNER SHALL INDEMNIFY AND HOLD HARMLESS BACH ASSOCIATES, PC FROM ALL CLAIMS, DAMAGES, LOSSES AND EXPENSES ARISING OUT OF OR RESULTING THEREFROM.

REVISIONS		
NO.	DESCRIPTION	DATE

DRAWING TITLE:
SANITARY SEWER DISTRIBUTION SYSTEM

JOB NO: RB2018-11	DESIGNED BY:
DATE: 6/8/23	DRAWN BY: LML
SCALE: 1"=100'	CHECKED BY: AFD

DRAWING NUMBER:
C5



BACH Associates, PC
ENGINEERS • ARCHITECTS • PLANNERS

304 White Horse Pike
Haddon Heights, New Jersey 08035
Tel: 856-546-8611
Fax: 856-546-8612
www.BachDesignGroup.com



A1	A2	A3	A4	A5
B1	B2	B3	B4	B5
C2	C3	C4	C5	
D2	D3			

PROJECT:

SANITARY SEWER DISTRIBUTION SYSTEM

BOROUGH OF RUNNEMEDE
CAMDEN COUNTY, NEW JERSEY

ALL DOCUMENTS PREPARED BY BACH ASSOCIATES, PC ARE INSTRUMENTS OF SERVICE IN RESPECT OF THE PROJECT. THEY ARE NOT INTRODUCED OR REPRESENTED TO BE SUITABLE FOR REUSE BY OWNER OR OTHERS OR EXTENSIONS OF THE PROJECT OR ON ANY OTHER PROJECT. ANY REUSE WITHOUT WRITTEN VERIFICATION OR ADAPTATION BY BACH ASSOCIATES, PC FOR THE SPECIFIC PURPOSE INTENDED WILL BE AT OWNER'S SOLE RISK AND WITHOUT LIABILITY OR LEGAL EXPOSURE TO BACH ASSOCIATES, PC. OWNER SHALL INDEMNIFY AND HOLD HARMLESS BACH ASSOCIATES, PC FROM ALL CLAIMS, DAMAGES, LOSSES AND EXPENSES ARISING OUT OF OR RESULTING THEREFROM.

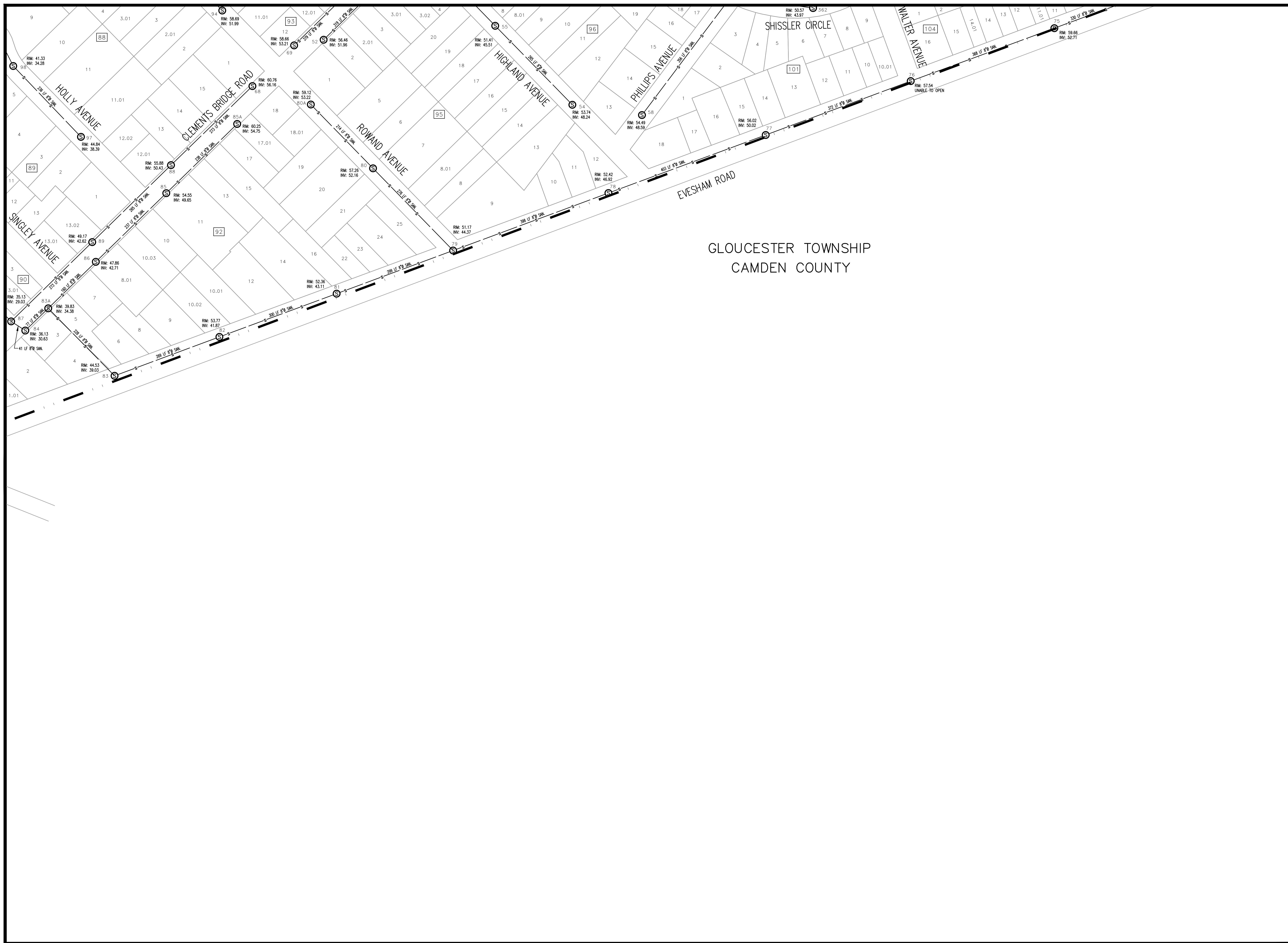
REVISIONS		
NO.	DESCRIPTION	DATE

SANITARY SEWER DISTRIBUTION SYSTEM

JOB NO: RB2018-11	DESIGNED BY:
DATE: 6/8/23	DRAWN BY: LML
SCALE: 1"=100'	CHECKED BY: AFD

DRAWING NUMBER:

D2



GLOUCESTER TOWNSHIP
CAMDEN COUNTY



BACH Associates, PC
ENGINEERS • ARCHITECTS • PLANNERS

304 White Horse Pike
Haddon Heights, New Jersey 08035
Tel: 856-546-8611
Fax: 856-546-8612
www.BachDesignGroup.com



A1	A2	A3	A4	A5
B1	B2	B3	B4	B5
C2	C3	C4	C5	
D2	D3			

PROJECT:

SANITARY SEWER DISTRIBUTION SYSTEM

BOROUGH OF RUNNEMEDE
CAMDEN COUNTY, NEW JERSEY

ALL DOCUMENTS PREPARED BY BACH ASSOCIATES, PC ARE INSTRUMENTS OF SERVICE IN RESPECT OF THE PROJECT. THEY ARE NOT INTENDED OR REPRESENTED TO BE SUITABLE FOR REUSE BY OWNER OR OTHERS ON EXTENSIONS OF THE PROJECT OR ON ANY OTHER PROJECT. ANY REUSE WITHOUT WRITTEN VERIFICATION OR ADAPTATION BY BACH ASSOCIATES, PC FOR THE SPECIFIC PURPOSE INTENDED WILL BE AN OWNER'S SOLE RISK AND WITHOUT LIABILITY OR LEGAL EXPOSURE TO BACH ASSOCIATES, PC. OWNER SHALL INDEMNIFY AND HOLD HARMLESS BACH ASSOCIATES, PC FROM ALL CLAIMS, DAMAGES, LOSSES AND EXPENSES ARISING OUT OF OR RESULTING THEREFROM.

REVISIONS

NO.	DESCRIPTION	DATE

DRAWING TITLE:
SANITARY SEWER DISTRIBUTION SYSTEM

JOB NO: RB2018-11	DESIGNED BY:
DATE: 6/8/23	DRAWN BY: LML
SCALE: 1"=100'	CHECKED BY: AFD

DRAWING NUMBER:

D3