

# BOROUGH OF RUNNEMEDE STORM SEWER DISTRIBUTION SYSTEM



BACH Associates, PC  
ENGINEERS • ARCHITECTS • PLANNERS

304 White Horse Pike  
Haddon Heights, New Jersey 08035

Tel: 856-546-8611  
Fax: 856-546-8612

www.BachDesignGroup.com

A1	A2	A3	A4	A5
B1	B2	B3	B4	B5
C2	C3	C4	C5	
D2	D3			

PROJECT:

STORM SEWER DISTRIBUTION SYSTEM

BOROUGH OF RUNNEMEDE  
CAMDEN COUNTY, NEW JERSEY

ALL DOCUMENTS PREPARED BY BACH ASSOCIATES, PC ARE INSTRUMENTS OF SERVICE IN RESPECT OF THE PROJECT. THEY ARE NOT INTENDED OR REPRESENTED TO BE SUITABLE FOR REUSE BY OWNER OR OTHERS ON EXTENSIONS OF THE PROJECT OR ON ANY OTHER PROJECT. ANY REUSE WITHOUT WRITTEN VERIFICATION OR ADAPTATION BY BACH ASSOCIATES, PC FOR THE SPECIFIC PURPOSE INTENDED WILL BE AT OWNER'S SOLE RISK AND WITHOUT LIABILITY OR LEGAL EXPOSURE TO BACH ASSOCIATES, PC. AND OWNER SHALL INDEMNIFY AND HOLD HARMLESS BACH ASSOCIATES, PC FROM ALL CLAIMS, DAMAGES, LOSSES AND EXPENSES ARISING OUT OF OR RESULTING THEREFROM.

REVISIONS

NO.	DESCRIPTION	DATE

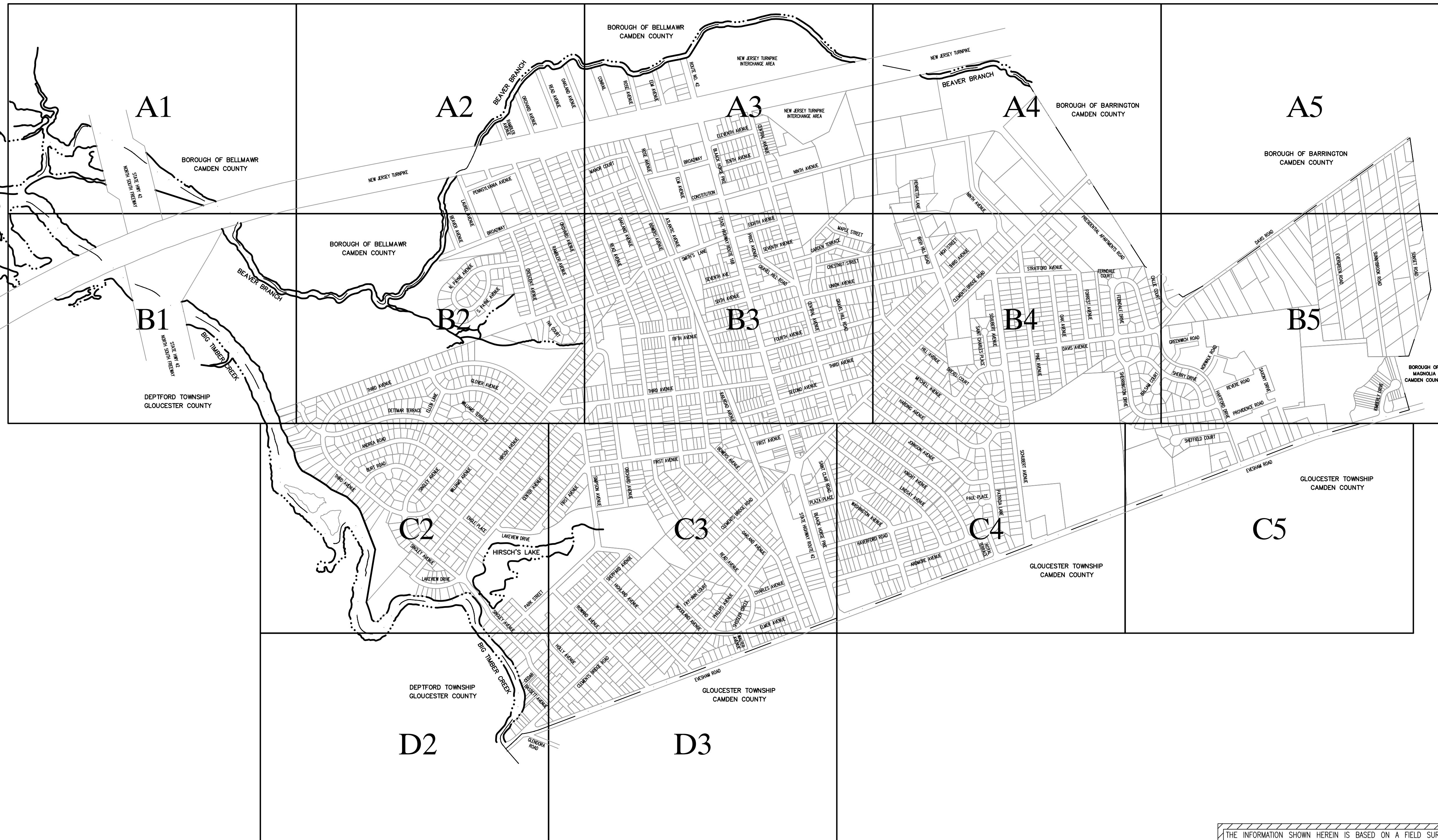
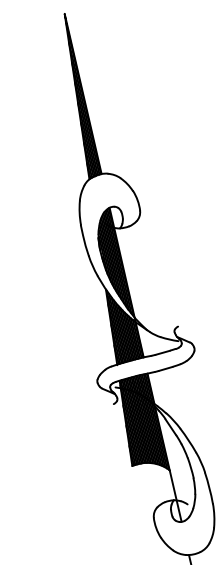
DRAWING TITLE:

STORM SEWER DISTRIBUTION SYSTEM

JOB NO: RB2018-11	DESIGNED BY: -
DATE: 6/8/23	DRAWN BY: LML
SCALE: 1"=1000'	CHECKED BY: AFD

DRAWING NUMBER:

01



## STORM SEWER DISTRIBUTION SYSTEM KEY MAP

SCALE: 1" = 600'



THE INFORMATION SHOWN HEREIN IS BASED ON A FIELD SURVEY COMPLETED BY BACH ASSOCIATES, PC UNDER THE SUPERVISION OF ANTHONY DIROSA, N.J.P.L.S. LICENSE No. 42570.

THE INFORMATION SHOWN HEREIN HAS BEEN LOCATED FROM FIELD SURVEY, RECORD PLANS, AND EXISTING DRAWINGS. THE SURVEYOR MAKES NO GUARANTEES THAT UNDERGROUND UTILITIES SHOWN COMPRISE ALL SUCH UTILITIES IN THE AREA, OR ARE SHOWN IN THE EXACT LOCATION AND DESCRIPTION INDICATED, ALTHOUGH HE DOES CERTIFY THAT THEY ARE LOCATED AS ACCURATELY AS POSSIBLE FROM THE INFORMATION AVAILABLE. THE SURVEYOR HAS NOT PHYSICALLY EXPOSED UNDERGROUND UTILITIES FOR LOCATION.

IT IS THE RESPONSIBILITY OF ALL PERSONS UTILIZING THIS PLAN AND THE INFORMATION CONTAINED HEREIN TO VERIFY LOCATIONS AND DESCRIPTIONS PRIOR TO THE COMMENCEMENT OF ANY RELATED WORK.



**BACH Associates, PC**  
ENGINEERS • ARCHITECTS • PLANNERS

304 White Horse Pike  
Haddon Heights, New Jersey 08035  
Tel: 856-546-8611  
Fax: 856-546-8612  
www.BachDesignGroup.com



A1	A2	A3	A4	A5
B1	B2	B3	B4	B5
C2	C3	C4	C5	
D2	D3			

PROJECT:

**STORM SEWER DISTRIBUTION SYSTEM**

BOROUGH OF RUNNEMEDE  
CAMDEN COUNTY, NEW JERSEY

ALL DOCUMENTS PREPARED BY BACH ASSOCIATES, PC ARE INSTRUMENTS OF SERVICE IN RESPECT OF THE PROJECT. THEY ARE NOT INTENDED OR REPRESENTED TO BE SUITABLE FOR REUSE BY OWNER OR OTHERS ON EXTENSIONS OF THE PROJECT OR ON ANY OTHER PROJECT. ANY REUSE WITHOUT WRITTEN VERIFICATION OR ADAPTATION BY BACH ASSOCIATES, PC FOR THE SPECIFIC PURPOSE INTENDED WILL BE AT OWNER'S SOLE RISK AND WITHOUT LIABILITY OR LEGAL EXPOSURE TO BACH ASSOCIATES, PC. AND OWNER SHALL INDEMNIFY AND HOLD HARMLESS BACH ASSOCIATES, PC FROM ALL CLAIMS, DAMAGES, LOSSES AND EXPENSES ARISING OUT OF OR RESULTING THEREFROM.

REVISIONS

NO.	DESCRIPTION	DATE

DRAWING TITLE:

**STORM SEWER DISTRIBUTION SYSTEM**

JOB NO:  
RB2018-11

DESIGNED BY:

DATE:  
6/8/23

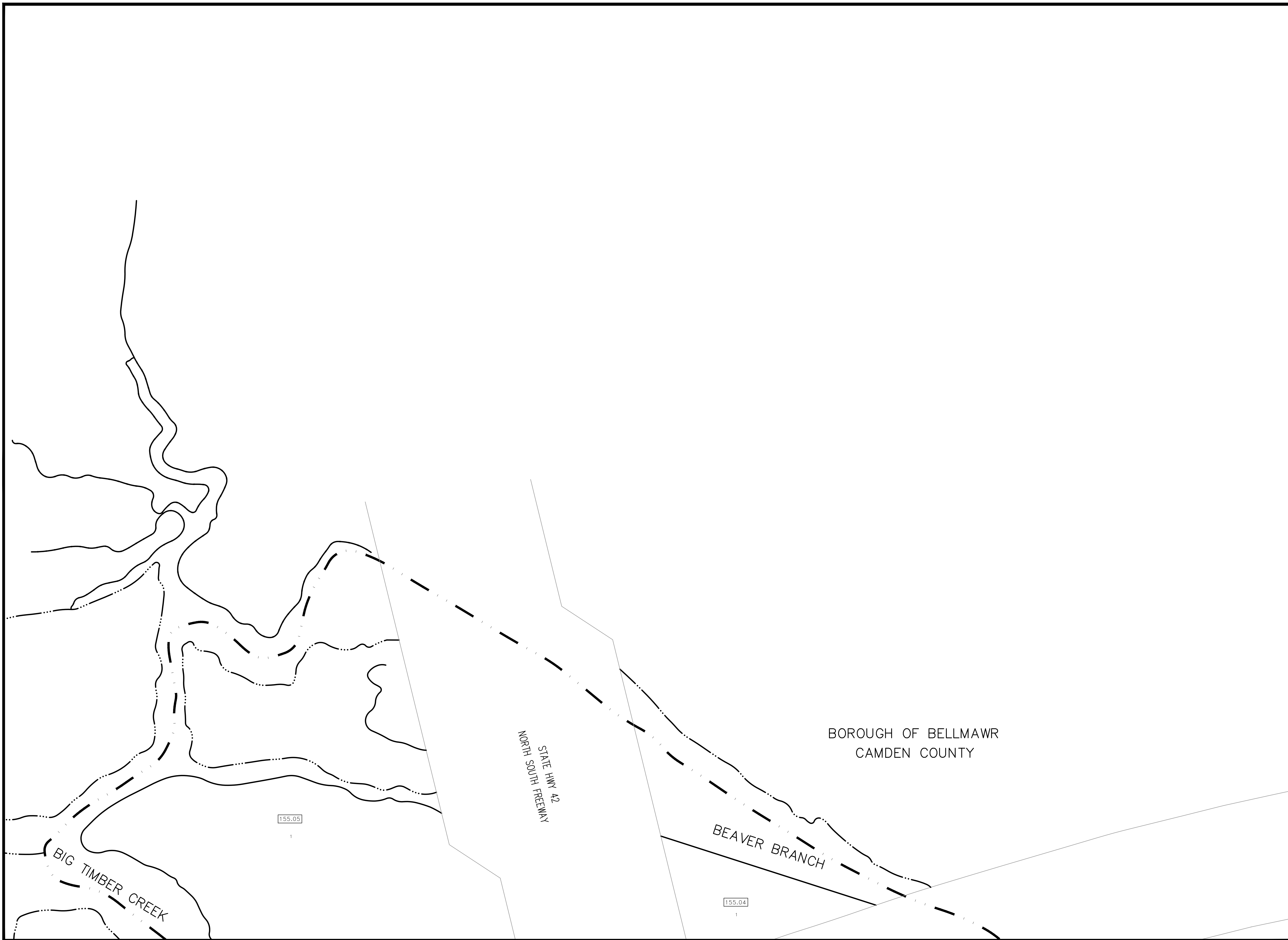
DRAWN BY:  
LML

SCALE:  
1"=100'

CHECKED BY:  
AFD

DRAWING NUMBER:

**A1**





**BACH Associates, PC**  
ENGINEERS • ARCHITECTS • PLANNERS

304 White Horse Pike  
Haddon Heights, New Jersey 08035  
Tel: 856-546-8611  
Fax: 856-546-8612  
www.BachDesignGroup.com



A1	A2	A3	A4	A5
B1	B2	B3	B4	B5
C2	C3	C4	C5	
D2	D3			

PROJECT:

**STORM SEWER DISTRIBUTION SYSTEM**

BOROUGH OF RUNNEMEDE  
CAMDEN COUNTY, NEW JERSEY

ALL DOCUMENTS PREPARED BY BACH ASSOCIATES, PC ARE INSTRUMENTS OF SERVICE IN RESPECT OF THE PROJECT. THEY ARE NOT INTENDED OR REPRESENTED TO BE SUITABLE FOR REUSE BY OWNER OR OTHERS ON EXTENSIONS OF THE PROJECT OR ON ANY OTHER PROJECT. ANY REUSE WITHOUT WRITTEN VERIFICATION OR ADAPTATION BY BACH ASSOCIATES, PC FOR THE SPECIFIC PURPOSE INTENDED WILL BE AT OWNER'S SOLE RISK AND WITHOUT LIABILITY OR LEGAL EXPOSURE TO BACH ASSOCIATES, PC. OWNER SHALL INDEMNIFY AND HOLD HARMLESS BACH ASSOCIATES, PC FROM ALL CLAIMS, DAMAGES, LOSSES AND EXPENSES ARISING OUT OF OR RESULTING THEREFROM.

REVISIONS		
NO.	DESCRIPTION	DATE

**STORM SEWER DISTRIBUTION SYSTEM**

JOB NO: RB2018-11	DESIGNED BY: LML
DATE: 6/8/23	DRAWN BY: LML
SCALE: 1"=100'	CHECKED BY: AFD

DRAWING NUMBER:

**A2**





**BACH Associates, PC**  
ENGINEERS • ARCHITECTS • PLANNERS

304 White Horse Pike  
Haddon Heights, New Jersey 08035

Tel: 856-546-8611  
Fax: 856-546-8612

www.BachDesignGroup.com



A1	A2	A3	A4	A5
B1	B2	B3	B4	B5
C2	C3	C4	C5	
D2	D3			

PROJECT:

**STORM SEWER DISTRIBUTION SYSTEM**

BOROUGH OF RUNNEMEDE  
CAMDEN COUNTY, NEW JERSEY

ALL DOCUMENTS PREPARED BY BACH ASSOCIATES, PC ARE INSTRUMENTS OF SERVICE IN RESPECT OF THE PROJECT. THEY ARE NOT INTENDED OR REPRESENTED TO BE SUITABLE FOR REUSE BY OWNER OR OTHERS OR EXTENSIONS OF THE PROJECT OR ON ANY OTHER PROJECT. ANY REUSE WITHOUT WRITTEN VERIFICATION OR ADAPTATION BY BACH ASSOCIATES, PC FOR THE SPECIFIC PURPOSE INTENDED WILL BE AT OWNER'S SOLE RISK AND WITHOUT LIABILITY OR LEGAL EXPOSURE TO BACH ASSOCIATES, PC. OWNER SHALL INDEMNIFY AND HOLD HARMLESS BACH ASSOCIATES, PC FROM ALL CLAIMS, DAMAGES, LOSSES AND EXPENSES ARISING OUT OF OR RESULTING THEREFROM.

REVISIONS

NO.	DESCRIPTION	DATE

DRAWING TITLE:

**STORM SEWER DISTRIBUTION SYSTEM**

JOB NO:

RB2018-11

DESIGNED BY:

LML

DATE:

6/8/23

DRAWN BY:

LML

SCALE:

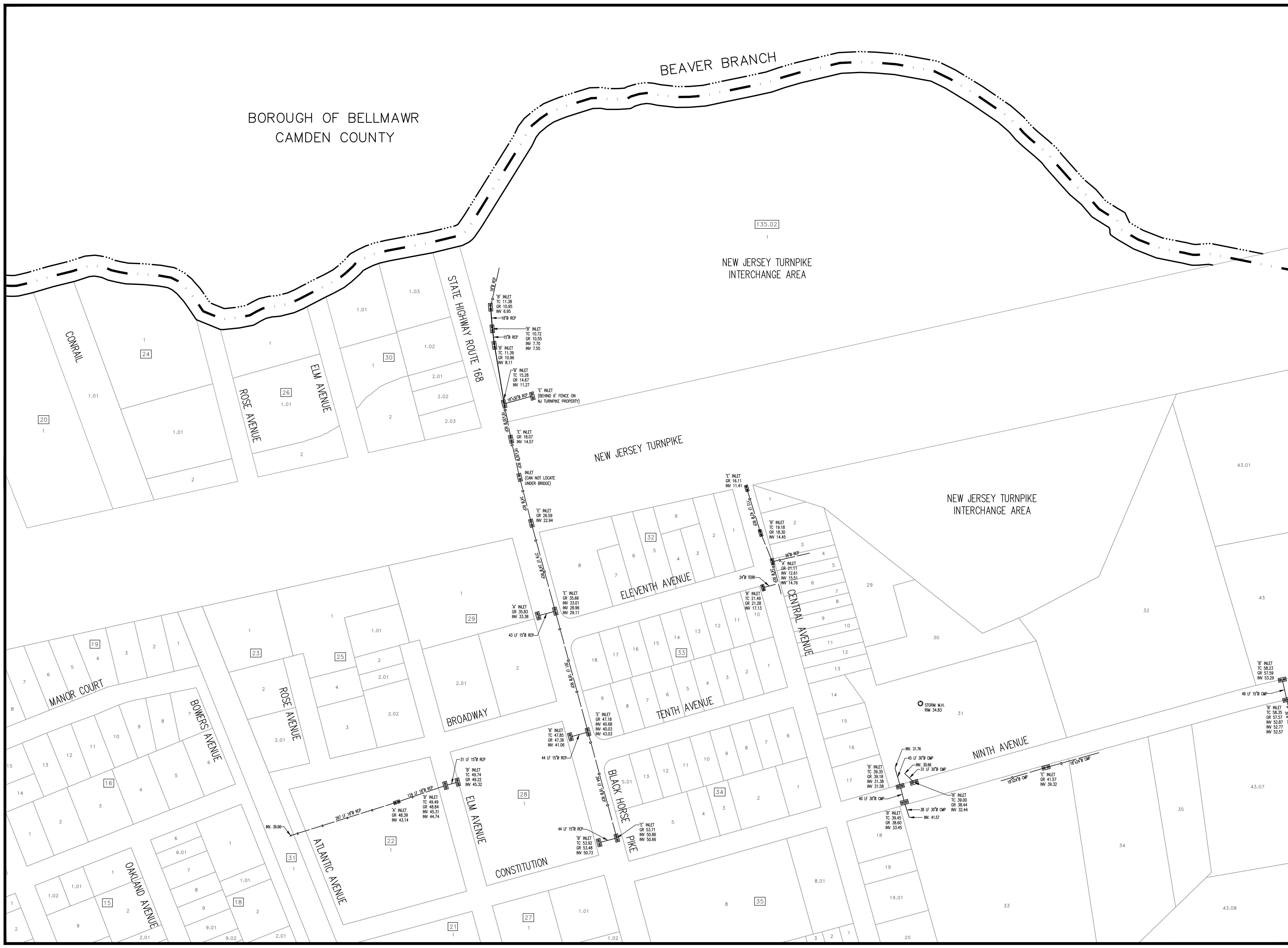
1"=100'

CHECKED BY:

AFD

DRAWING NUMBER:

**A3**





**BACH Associates, PC**  
ENGINEERS • ARCHITECTS • PLANNERS

304 White Horse Pike  
Haddon Heights, New Jersey 08035

Tel: 856-546-8611  
Fax: 856-546-8612

www.BachDesignGroup.com



A1	A2	A3	A4	A5
B1	B2	B3	B4	B5
C2	C3	C4	C5	
D2	D3			

PROJECT:

**STORM SEWER DISTRIBUTION SYSTEM**

BOROUGH OF RUNNEMEDE  
CAMDEN COUNTY, NEW JERSEY

ALL DOCUMENTS PREPARED BY BACH ASSOCIATES, PC ARE INSTRUMENTS OF SERVICE IN RESPECT OF THE PROJECT. THEY ARE NOT INTENDED OR REPRESENTED TO BE SUITABLE FOR REUSE BY OWNER OR OTHERS OR EXTENSIONS OF THE PROJECT OR ON ANY OTHER PROJECT. ANY REUSE WITHOUT WRITTEN VERIFICATION OR ADAPTATION BY BACH ASSOCIATES, PC FOR THE SPECIFIC PURPOSE INTENDED WILL BE AT OWNER'S SOLE RISK AND WITHOUT LIABILITY OR LEGAL EXPOSURE TO BACH ASSOCIATES, PC. OWNER SHALL INDEMNIFY AND HOLD HARMLESS BACH ASSOCIATES, PC FROM ALL CLAIMS, DAMAGES, LOSSES AND EXPENSES ARISING OUT OF OR RESULTING THEREFROM.

REVISIONS

NO.	DESCRIPTION	DATE

DRAWING TITLE:

**STORM SEWER DISTRIBUTION SYSTEM**

JOB NO:

DESIGNED BY:

DATE:

DRAWN BY:

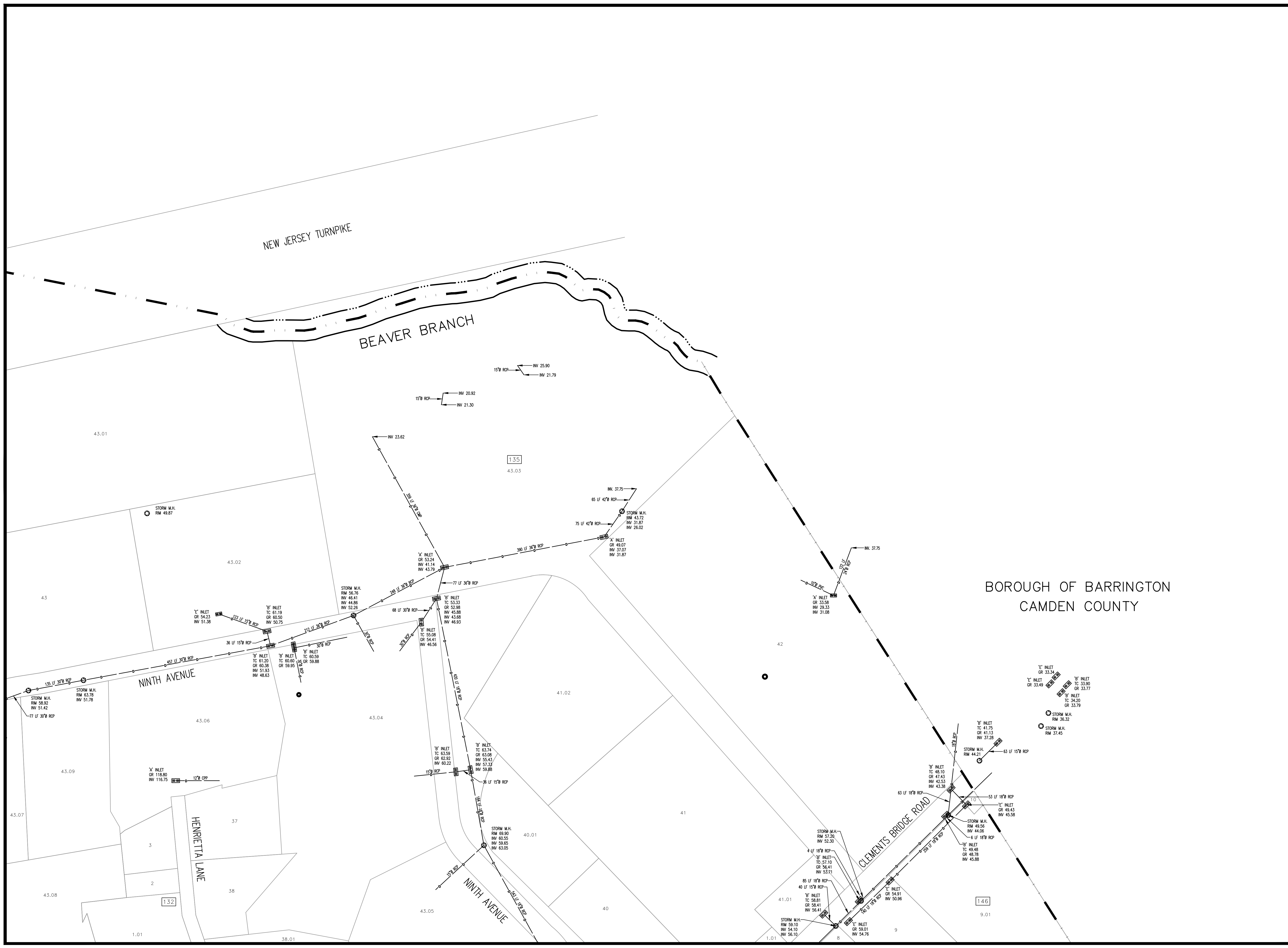
SCALE:

CHECKED BY:

DRAWING NUMBER:

AFD

**A4**





BACH Associates, PC  
ENGINEERS • ARCHITECTS • PLANNERS

304 White Horse Pike  
Haddon Heights, New Jersey 08035

Tel: 856-546-8611  
Fax: 856-546-8612

www.BachDesignGroup.com



A1	A2	A3	A4	A5
B1	B2	B3	B4	B5
C2	C3	C4	C5	
D2	D3			

PROJECT:

**STORM SEWER DISTRIBUTION SYSTEM**

BOROUGH OF RUNNEMEDE  
CAMDEN COUNTY, NEW JERSEY

ALL DOCUMENTS PREPARED BY BACH ASSOCIATES, PC ARE INSTRUMENTS OF SERVICE IN RESPECT OF THE PROJECT. THEY ARE NOT INTENDED OR REPRESENTED TO BE SUITABLE FOR REUSE BY OWNER OR OTHERS ON EXTENSIONS OF THE PROJECT OR ON ANY OTHER PROJECT. ANY REUSE WITHOUT WRITTEN VERIFICATION OR ADAPTATION BY BACH ASSOCIATES, PC FOR THE SPECIFIC PURPOSE INTENDED WILL BE AT OWNER'S SOLE RISK AND WITHOUT LIABILITY OF LEGAL EXPOSURE TO BACH ASSOCIATES, PC. AND OWNER SHALL INDEMNIFY AND HOLD HARMLESS BACH ASSOCIATES, PC FROM ALL CLAIMS, DAMAGES, LOSSES AND EXPENSES ARISING OUT OF OR RESULTING THEREFROM.

REVISIONS

NO.	DESCRIPTION	DATE

DRAWING TITLE:

**STORM SEWER DISTRIBUTION SYSTEM**

JOB NO:  
RB2018-11

DESIGNED BY:

DATE:  
6/8/23

DRAWN BY:  
LML

SCALE:  
1"=100'

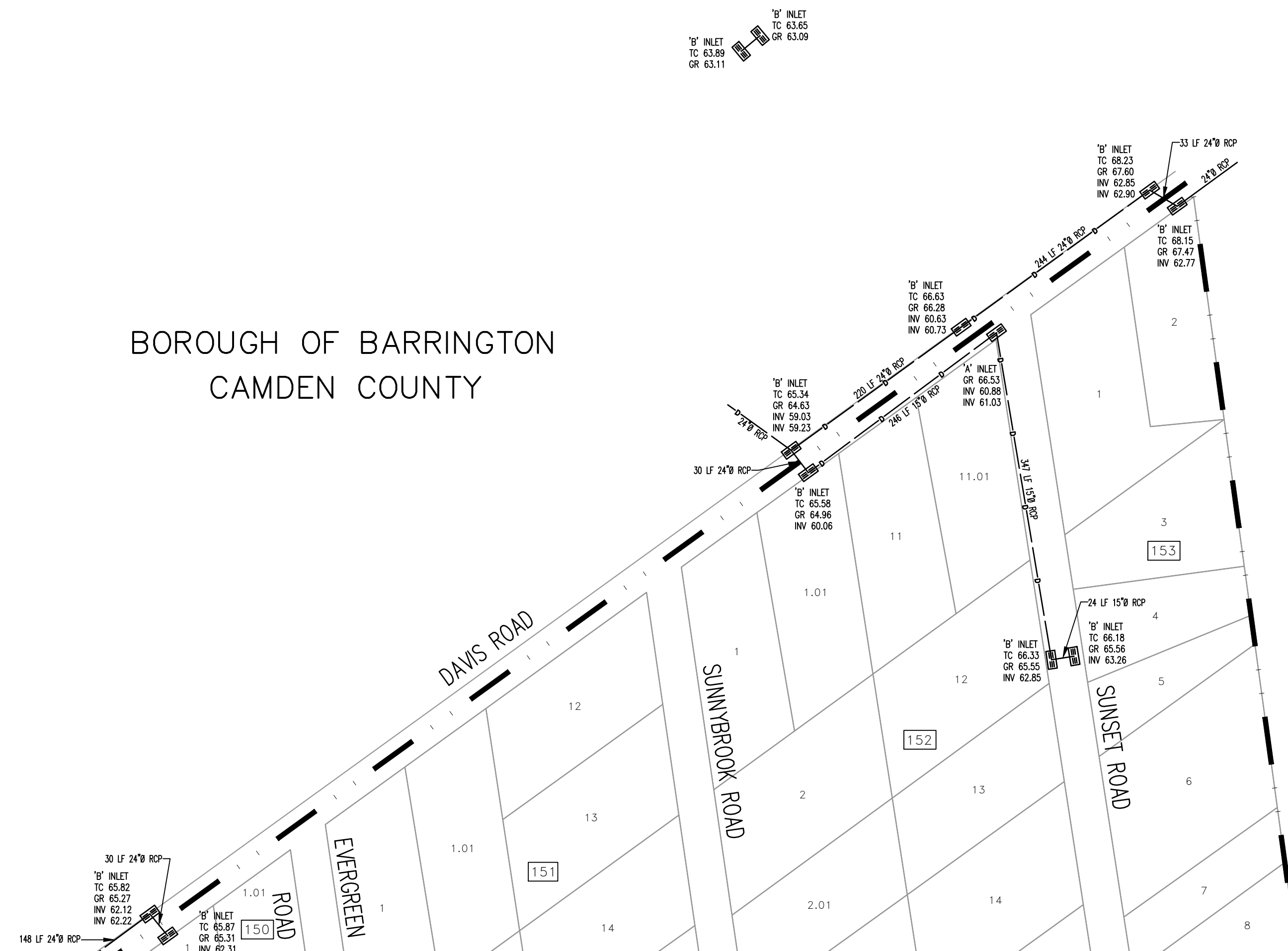
CHECKED BY:  
AFD

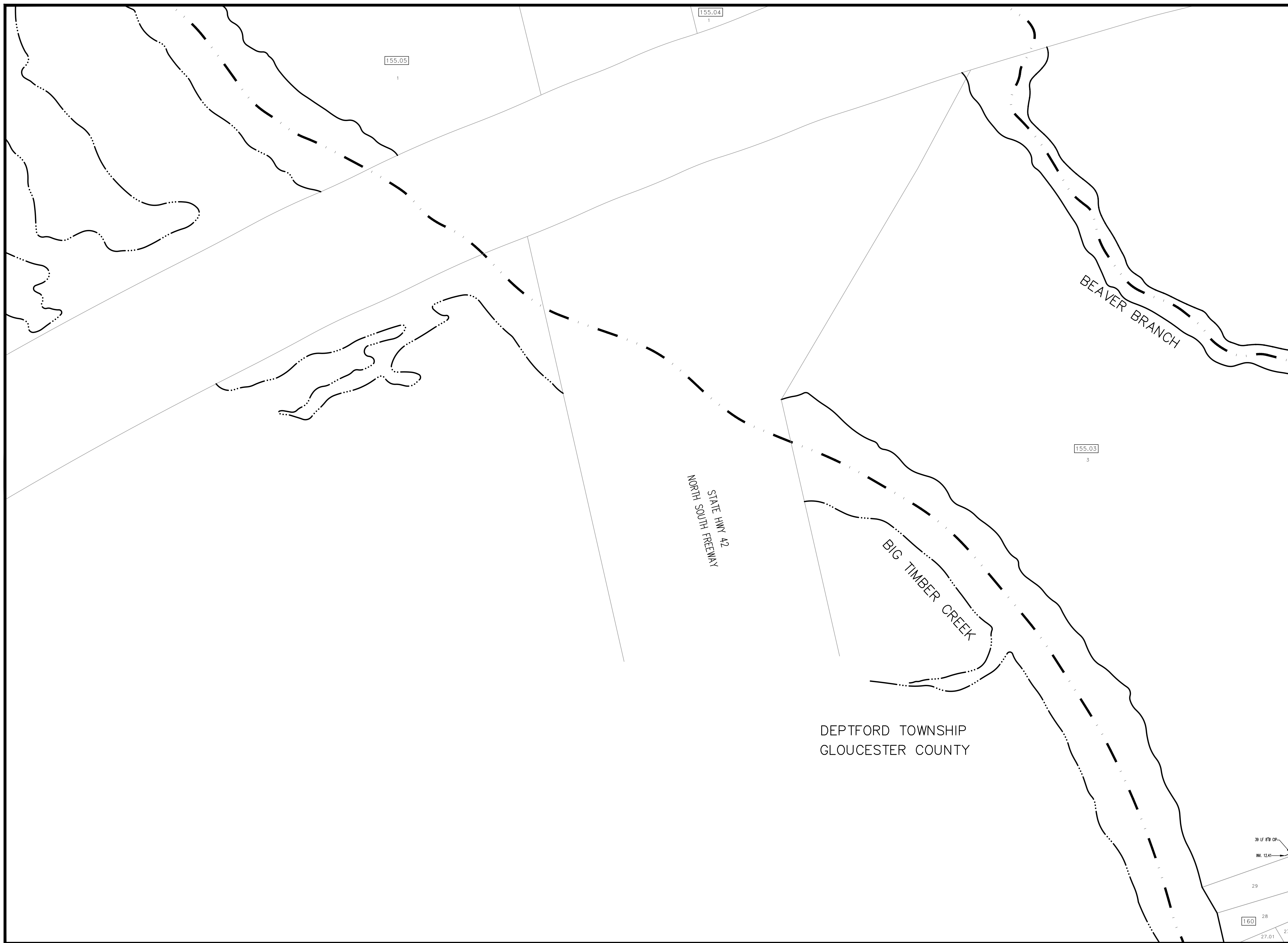
DRAWING NUMBER:

**A5**

BOROUGH OF BARRINGTON  
CAMDEN COUNTY

BOROUGH OF  
MAGNOLIA  
CAMDEN COUNTY





**BACH Associates, PC**  
ENGINEERS • ARCHITECTS • PLANNERS

304 White Horse Pike  
Haddon Heights, New Jersey 08035  
Tel: 856-546-8611  
Fax: 856-546-8612  
www.BachDesignGroup.com



A1	A2	A3	A4	A5
B1	B2	B3	B4	B5
C2	C3	C4	C5	
D2	D3			

PROJECT:

**STORM SEWER DISTRIBUTION SYSTEM**

BOROUGH OF RUNNEMEDE  
CAMDEN COUNTY, NEW JERSEY

ALL DOCUMENTS PREPARED BY BACH ASSOCIATES, PC ARE INSTRUMENTS OF SERVICE IN RESPECT OF THE PROJECT. THEY ARE NOT INTENDED OR REPRESENTED TO BE SUITABLE FOR REUSE BY OWNER OR OTHERS ON EXTENSIONS OF THE PROJECT OR ON ANY OTHER PROJECT. ANY REUSE WITHOUT WRITTEN VERIFICATION OR ADAPTATION BY BACH ASSOCIATES, PC FOR THE SPECIFIC PURPOSE INTENDED WILL BE AT OWNER'S SOLE RISK AND WITHOUT LIABILITY OR LEGAL EXPOSURE TO BACH ASSOCIATES, PC. AND OWNER SHALL INDEMNIFY AND HOLD HARMLESS BACH ASSOCIATES, PC FROM ALL CLAIMS, DAMAGES, LOSSES AND EXPENSES ARISING OUT OF OR RESULTING THEREFROM.

REVISIONS		
NO.	DESCRIPTION	DATE

DRAWING TITLE:  
**STORM SEWER DISTRIBUTION SYSTEM**

JOB NO: RB2018-11	DESIGNED BY:
DATE: 6/8/23	DRAWN BY: LML
SCALE: 1"=100'	CHECKED BY: AFD

DRAWING NUMBER:  
**B1**

DEPTFORD TOWNSHIP  
GLOUCESTER COUNTY

30 IF 6" OR  
IN: 12.41  
29  
160 28  
27.01 27



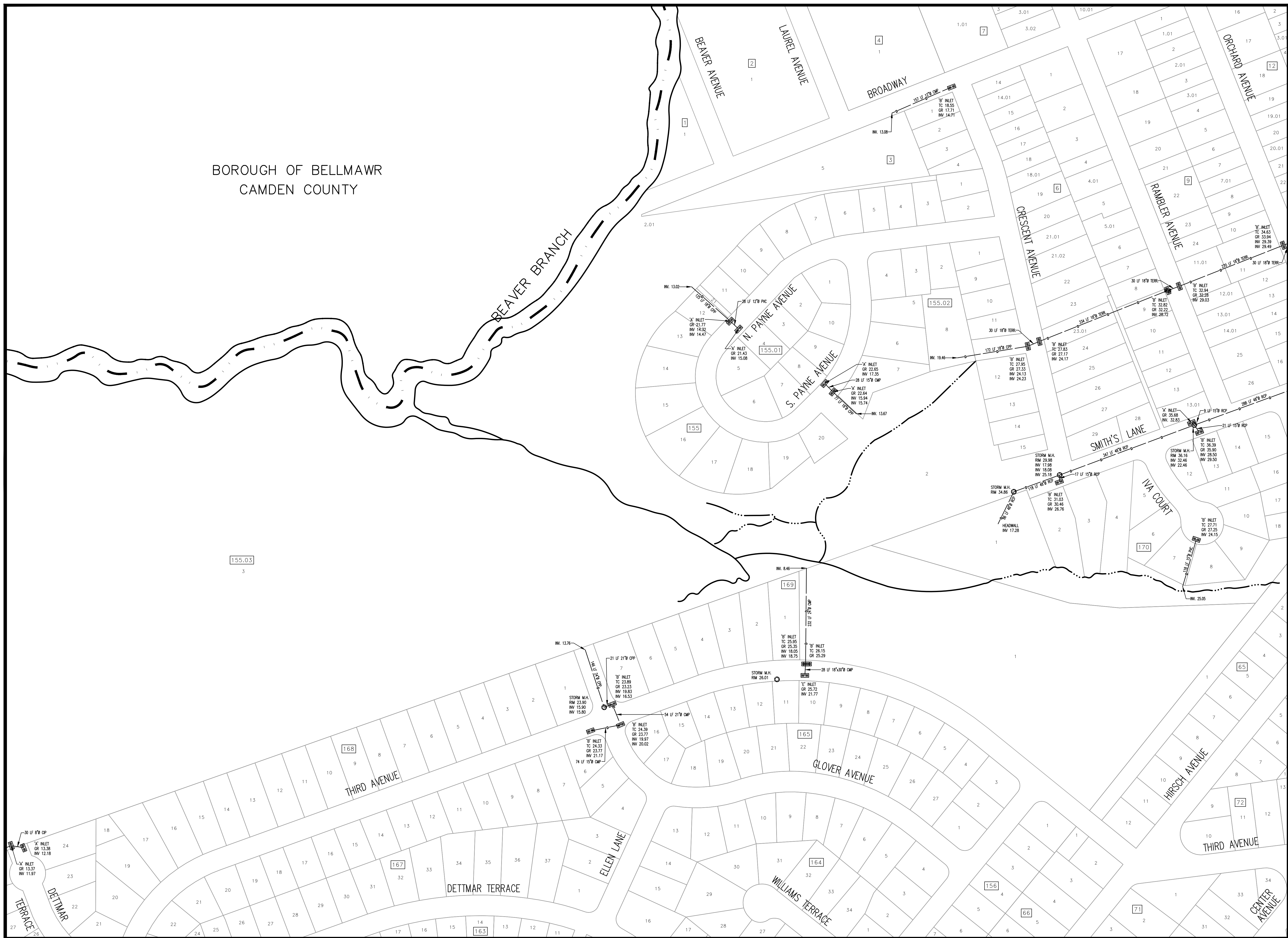
**BACH Associates, PC**  
ENGINEERS • ARCHITECTS • PLANNERS

304 White Horse Pike  
Haddon Heights, New Jersey 08035

Tel: 856-546-8611  
Fax: 856-546-8612

www.BachDesignGroup.com

BOROUGH OF BELLMAWR  
CAMDEN COUNTY



A1	A2	A3	A4	A5
B1	B2	B3	B4	B5
C2	C3	C4	C5	
D2	D3			

PROJECT:

**STORM SEWER DISTRIBUTION SYSTEM**

BOROUGH OF RUNNEMEDA  
CAMDEN COUNTY, NEW JERSEY

ALL DOCUMENTS PREPARED BY BACH ASSOCIATES, PC ARE INSTRUMENTS OF SERVICE IN RESPECT OF THE PROJECT. THEY ARE NOT INTENDED OR REPRESENTED TO BE SUITABLE FOR REUSE BY OWNER OR OTHERS ON EXTENSIONS OF THE PROJECT OR ON ANY OTHER PROJECT. ANY REUSE WITHOUT WRITTEN VERIFICATION OR ADAPTATION BY BACH ASSOCIATES, PC FOR THE SPECIFIC PURPOSE INTENDED WILL BE AT OWNER'S SOLE RISK AND WITHOUT LIABILITY OR LEGAL EXPOSURE TO BACH ASSOCIATES, PC. OWNER SHALL INDEMNIFY AND HOLD HARMLESS BACH ASSOCIATES, PC FROM ALL CLAIMS, DAMAGES, LOSSES AND EXPENSES ARISING OUT OF OR RESULTING THEREFROM.

REVISIONS		
NO.	DESCRIPTION	DATE

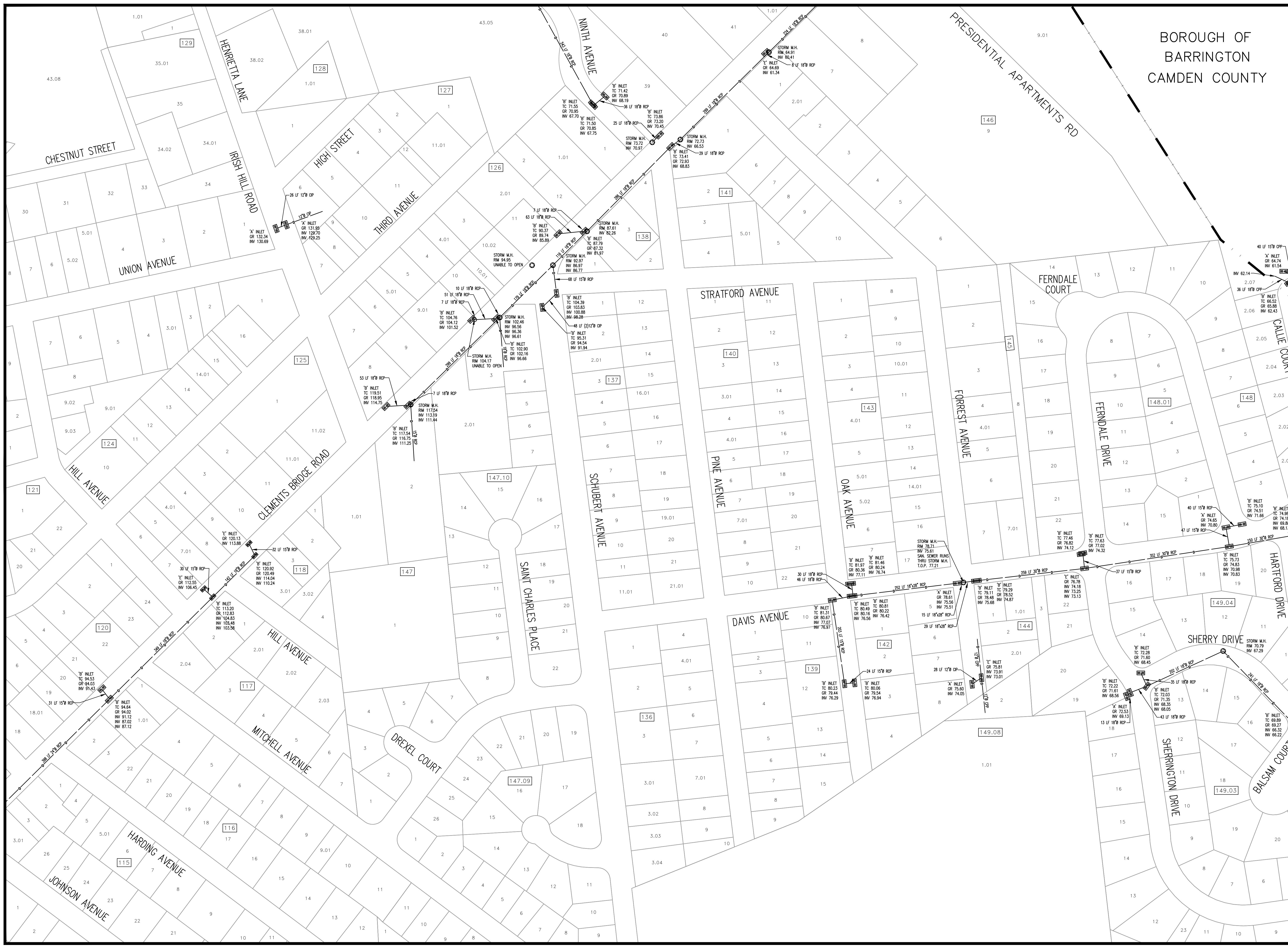
DRAWING TITLE:  
**STORM SEWER DISTRIBUTION SYSTEM**

JOB NO: RB2018-11	DESIGNED BY:
DATE: 6/8/23	DRAWN BY: LML
SCALE: 1"=100'	CHECKED BY: AFD

DRAWING NUMBER:  
**B2**







BOROUGH OF  
BARRINGTON  
CAMDEN COUNTY



BACH Associates, PC  
ENGINEERS • ARCHITECTS • PLANNERS

304 White Horse Pike  
Haddon Heights, New Jersey 08035  
Tel: 856-546-8611  
Fax: 856-546-8612  
www.BachDesignGroup.com



A1	A2	A3	A4	A5
B1	B2	B3	B4	B5
C2	C3	C4	C5	
D2	D3			

PROJECT:

STORM SEWER DISTRIBUTION SYSTEM

BOROUGH OF RUNNEMED  
CAMDEN COUNTY, NEW JERSEY

ALL DOCUMENTS PREPARED BY BACH ASSOCIATES, PC ARE INSTRUMENTS OF SERVICE IN RESPECT OF THE PROJECT. THEY ARE NOT INTENDED OR REPRESENTED TO BE SUITABLE FOR REUSE BY OWNER OR OTHERS ON EXTENSIONS OF THE PROJECT OR ANY OTHER PROJECT. ANY REUSE WITHOUT WRITTEN VERIFICATION OR ADAPTATION BY BACH ASSOCIATES, PC FOR THE SPECIFIC PURPOSE INTENDED WILL BE AT THE USER'S SOLE RISK AND WITHOUT LIABILITY OR LEGAL EXPOSURE TO BACH ASSOCIATES, PC. OWNER SHALL INDEMNIFY AND HOLD HARMLESS BACH ASSOCIATES, PC FROM ALL CLAIMS, DAMAGES, LOSSES AND EXPENSES ARISING OUT OF OR RESULTING THEREFROM.

REVISIONS		
NO.	DESCRIPTION	DATE

DRAWING TITLE:  
**STORM SEWER DISTRIBUTION SYSTEM**

JOB NO: RB2018-11	DESIGNED BY:
DATE: 6/8/23	DRAWN BY: LML
SCALE: 1"=100'	CHECKED BY: AFD

DRAWING NUMBER:

**B4**



**BACH Associates, PC**  
ENGINEERS • ARCHITECTS • PLANNERS

304 White Horse Pike  
Haddon Heights, New Jersey 08035

Tel: 856-546-8611  
Fax: 856-546-8612

www.BachDesignGroup.com



A1	A2	A3	A4	A5
B1	B2	B3	B4	<b>B5</b>
C2	C3	C4	C5	
D2	D3			

PROJECT:

**STORM SEWER DISTRIBUTION SYSTEM**

BOROUGH OF RUNNEMED  
CAMDEN COUNTY, NEW JERSEY

ALL DOCUMENTS PREPARED BY BACH ASSOCIATES, PC ARE INSTRUMENTS OF SERVICE IN RESPECT OF THE PROJECT. THEY ARE NOT INTENDED OR REPRESENTED TO BE SUITABLE FOR REUSE BY OWNER OR OTHERS ON EXTENSIONS OF THE PROJECT OR ON ANY OTHER PROJECT. ANY REUSE WITHOUT WRITTEN VERIFICATION OR ADAPTATION BY BACH ASSOCIATES, PC FOR THE SPECIFIC PURPOSE INTENDED WILL BE AT OWNER'S SOLE RISK AND WITHOUT LIABILITY OR LEGAL EXPOSURE TO BACH ASSOCIATES, PC. OWNER SHALL INDEMNIFY AND HOLD HARMLESS BACH ASSOCIATES, PC FROM ALL CLAIMS, DAMAGES, LOSSES AND EXPENSES ARISING OUT OF OR RESULTING THEREFROM.

REVISIONS

NO.	DESCRIPTION	DATE

DRAWING TITLE:

**STORM SEWER DISTRIBUTION SYSTEM**

JOB NO:

RB2018-11

DESIGNED BY:

LML

DATE:

6/8/23

DRAWN BY:

AFD

SCALE:

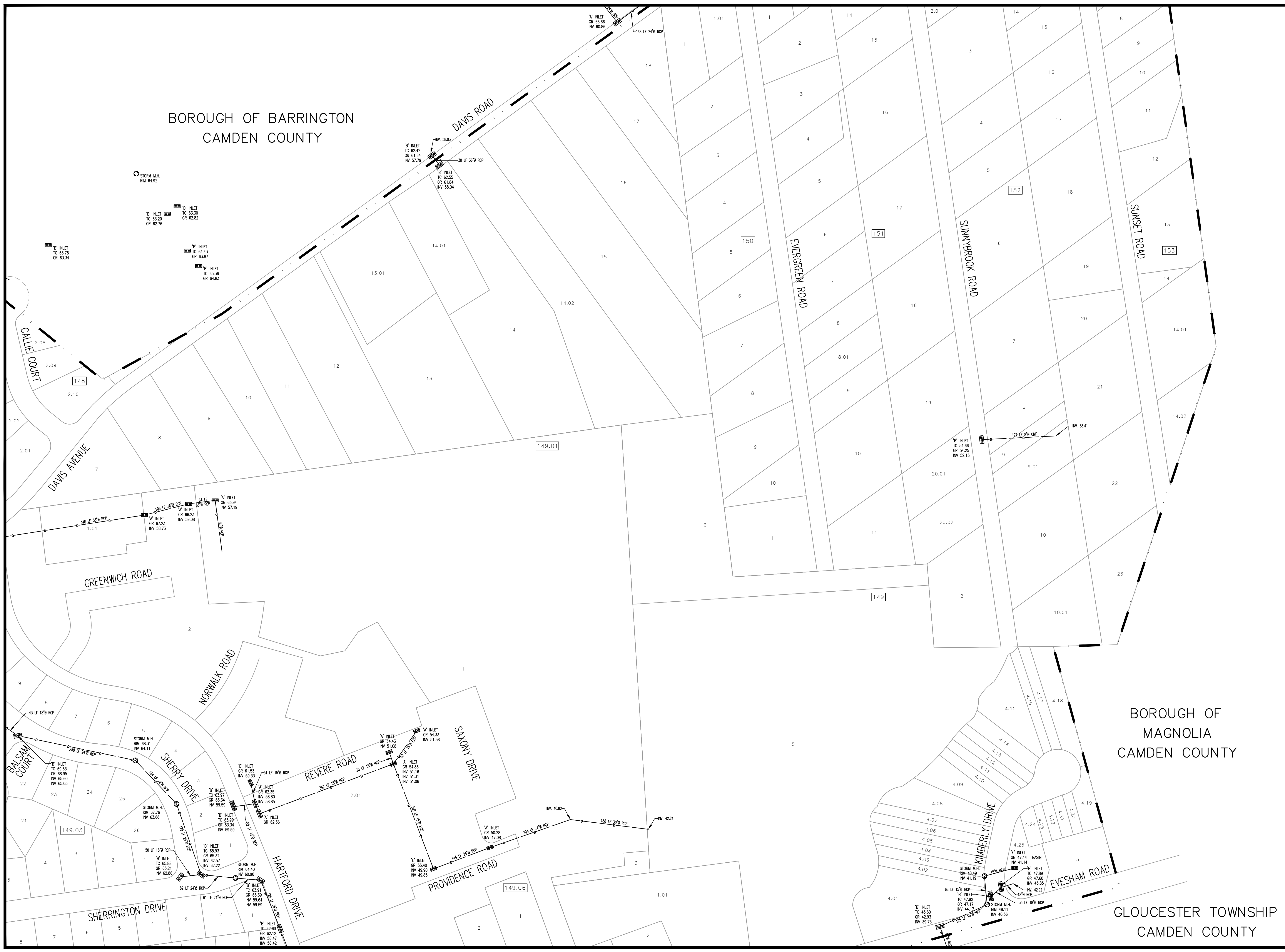
1"=100'

CHECKED BY:

AFD

DRAWING NUMBER:

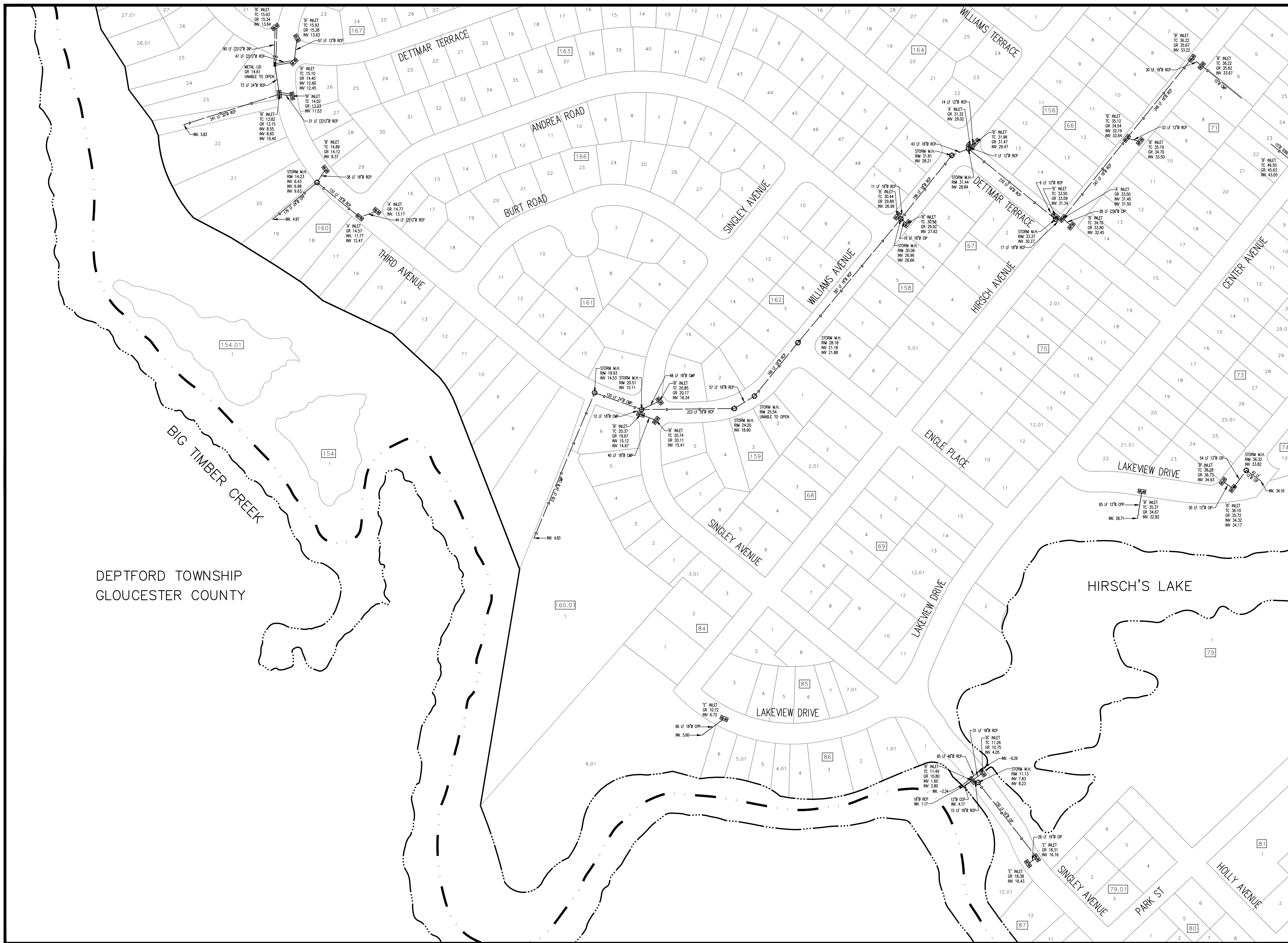
**B5**



BOROUGH OF BARRINGTON  
CAMDEN COUNTY

BOROUGH OF MAGNOLIA  
CAMDEN COUNTY

GLOUCESTER TOWNSHIP  
CAMDEN COUNTY



DEPTFORD TOWNSHIP  
GLOUCESTER COUNTY



**BACH Associates, PC**  
ENGINEERS • ARCHITECTS • PLANNERS

304 White Horse Pike  
Haddon Heights, New Jersey 08035  
Tel: 856-546-8611  
Fax: 856-546-8612  
www.BachDesignGroup.com

A1	A2	A3	A4	A5
B1	B2	B3	B4	B5
C2	C3	C4	C5	
D2	D3			

PROJECT:

**STORM SEWER DISTRIBUTION SYSTEM**

BOROUGH OF RUNNEMED  
CAMDEN COUNTY, NEW JERSEY

ALL DOCUMENTS PREPARED BY BACH ASSOCIATES, PC ARE INSTRUMENTS OF SERVICE IN RESPECT OF THE PROJECT. THEY ARE NOT INTENDED OR REPRESENTED TO BE SUITABLE FOR REUSE BY OWNER OR OTHERS ON EXTENSIONS OF THE PROJECT OR ON ANY OTHER PROJECT. ANY REUSE WITHOUT WRITTEN VERIFICATION OR ADAPTATION BY BACH ASSOCIATES, PC FOR THE SPECIFIC PURPOSES INTENDED WILL BE AT OWNER'S SOLE RISK AND WITHOUT LIABILITY OR LEGAL EXPOSURE TO BACH ASSOCIATES, PC. OWNER SHALL INDEMNIFY AND HOLD HARMLESS BACH ASSOCIATES, PC FROM ALL CLAIMS, DAMAGES, LOSSES AND EXPENSES ARISING OUT OF OR RESULTING THEREFROM.

REVISIONS		
NO.	DESCRIPTION	DATE

DRAWING TITLE:  
**STORM SEWER DISTRIBUTION SYSTEM**

JOB NO: RB2018-11	DESIGNED BY:
DATE: 6/8/23	DRAWN BY: LML
SCALE: 1"=100'	CHECKED BY: AFD

DRAWING NUMBER:

**C2**



**BACH Associates, PC**  
ENGINEERS • ARCHITECTS • PLANNERS

304 White Horse Pike  
Haddon Heights, New Jersey 08035

Tel: 856-546-8611  
Fax: 856-546-8612

www.BachDesignGroup.com

A1	A2	A3	A4	A5
B1	B2	B3	B4	B5
C2	C3	C4	C5	
D2	D3			

PROJECT:

**STORM SEWER DISTRIBUTION SYSTEM**

BOROUGH OF RUNNEMEDA  
CAMDEN COUNTY, NEW JERSEY

ALL DOCUMENTS PREPARED BY BACH ASSOCIATES, PC ARE INSTRUMENTS OF SERVICE IN RESPECT OF THE PROJECT. THEY ARE NOT INTENDED OR REPRESENTED TO BE SUITABLE FOR REUSE BY OWNER OR OTHERS ON EXTENSIONS OF THE PROJECT OR ON ANY OTHER PROJECT. ANY REUSE WITHOUT WRITTEN VERIFICATION OR ADAPTATION BY BACH ASSOCIATES, PC FOR THE SPECIFIC PURPOSES INTENDED WILL BE AT USER'S SOLE RISK AND WITHOUT LIABILITY OR LEGAL EXPOSURE TO BACH ASSOCIATES, PC. AND OWNER SHALL INDEMNIFY AND HOLD HARMLESS BACH ASSOCIATES, PC FROM ALL CLAIMS, DAMAGES, LOSSES AND EXPENSES ARISING OUT OF OR RESULTING THEREFROM.

REVISIONS

NO.	DESCRIPTION	DATE

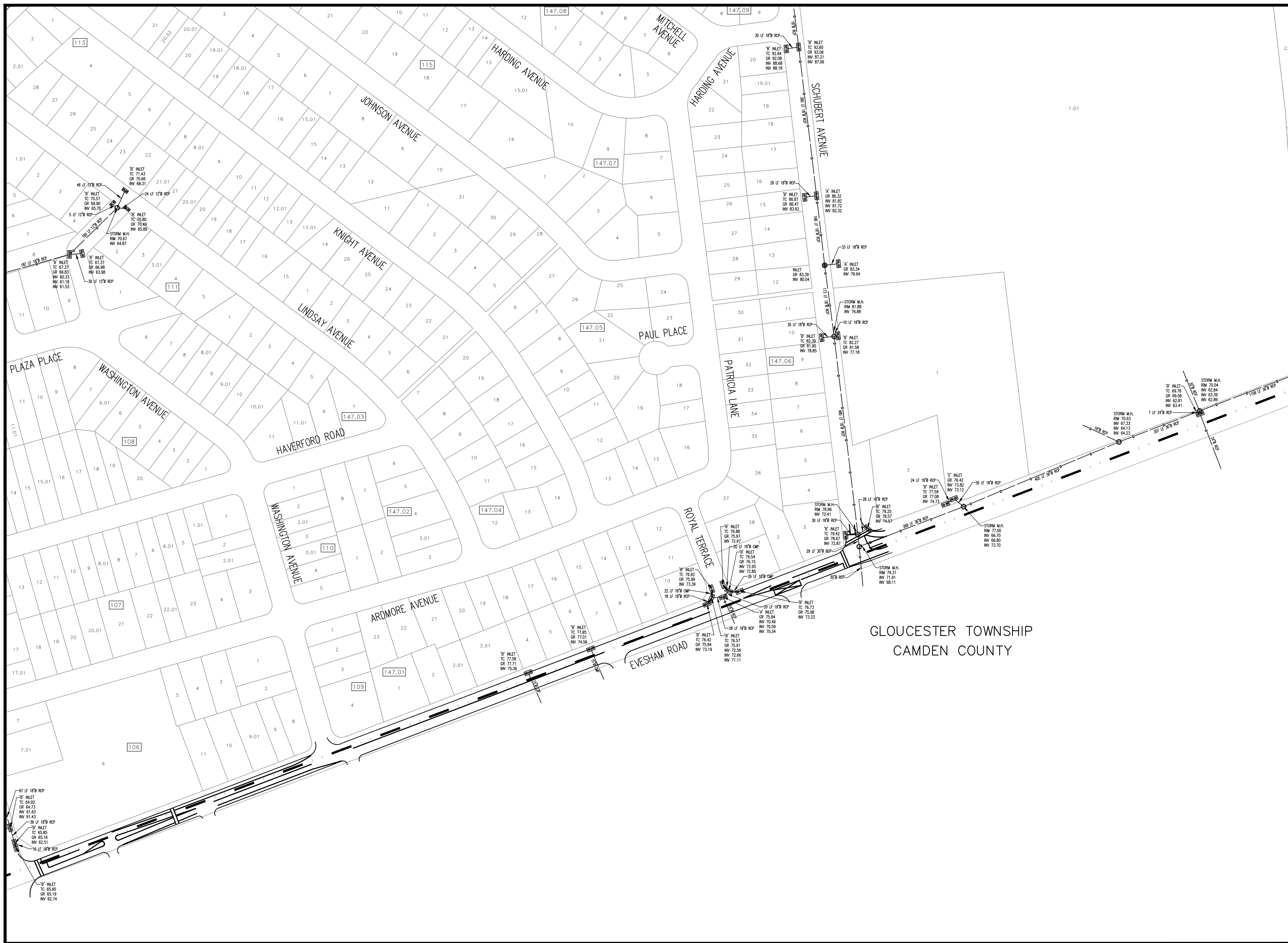
DRAWING TITLE:  
**STORM SEWER DISTRIBUTION SYSTEM**

JOB NO: RB2018-11  
DATE: 6/8/23  
SCALE: 1"=100'

DESIGNED BY:  
DRAWN BY: LML  
CHECKED BY: AFD

DRAWING NUMBER:

**C3**



GLOUCESTER TOWNSHIP  
CAMDEN COUNTY



**BACH Associates, PC**  
ENGINEERS • ARCHITECTS • PLANNERS

304 White Horse Pike  
Haddon Heights, New Jersey 08035  
Tel: 856-546-8611  
Fax: 856-546-8612  
www.BachDesignGroup.com



A1	A2	A3	A4	A5
B1	B2	B3	B4	B5
C2	C3	C4	C5	
D2	D3			

PROJECT:

**STORM SEWER DISTRIBUTION SYSTEM**

BOROUGH OF RUNNEMEDA  
CAMDEN COUNTY, NEW JERSEY

ALL DOCUMENTS PREPARED BY BACH ASSOCIATES, PC ARE INSTRUMENTS OF SERVICE IN RESPECT OF THE PROJECT. THEY ARE NOT INTENDED OR REPRESENTED TO BE SUITABLE FOR REUSE BY OWNER OR OTHERS ON EXTENSIONS OF THE PROJECT OR ON ANY OTHER PROJECT. ANY REUSE WITHOUT WRITTEN VERIFICATION OR ADAPTATION BY BACH ASSOCIATES, PC FOR THE SPECIFIC PURPOSE INTENDED WILL BE AT OWNER'S SOLE RISK AND WITHOUT LIABILITY OR LEGAL EXPOSURE TO BACH ASSOCIATES, PC. OWNER SHALL INDEMNIFY AND HOLD HARMLESS BACH ASSOCIATES, PC FROM ALL CLAIMS, DAMAGES, LOSSES AND EXPENSES ARISING OUT OF OR RESULTING THEREFROM.

REVISIONS

NO.	DESCRIPTION	DATE

DRAWING TITLE:  
**STORM SEWER DISTRIBUTION SYSTEM**

JOB NO: RB2018-11	DESIGNED BY:
DATE: 6/8/23	DRAWN BY: LML
SCALE: 1"=100'	CHECKED BY: AFD

DRAWING NUMBER:  
**C4**





**BACH Associates, PC**  
ENGINEERS • ARCHITECTS • PLANNERS

304 White Horse Pike  
Haddon Heights, New Jersey 08035

Tel: 856-546-8611  
Fax: 856-546-8612

www.BachDesignGroup.com



A1	A2	A3	A4	A5
B1	B2	B3	B4	B5
C2	C3	C4	C5	
D2	D3			

PROJECT:

**STORM SEWER DISTRIBUTION SYSTEM**

BOROUGH OF RUNNEMEDE  
CAMDEN COUNTY, NEW JERSEY

ALL DOCUMENTS PREPARED BY BACH ASSOCIATES, PC ARE INSTRUMENTS OF SERVICE IN RESPECT OF THE PROJECT. THEY ARE NOT INTRODUCED OR REPRESENTED TO BE SUITABLE FOR REUSE BY OWNER OR OTHERS OR EXTENSIONS OF THE PROJECT OR ON ANY OTHER PROJECT. ANY REUSE WITHOUT WRITTEN VERIFICATION OR ADAPTATION BY BACH ASSOCIATES, PC FOR THE SPECIFIC PURPOSE INTENDED WILL BE AT OWNER'S SOLE RISK AND WITHOUT LIABILITY OR LEGAL EXPOSURE TO BACH ASSOCIATES, PC. AND OWNER SHALL INDEMNIFY AND HOLD HARMLESS BACH ASSOCIATES, PC FROM ALL CLAIMS, DAMAGES, LOSSES AND EXPENSES ARISING OUT OF OR RESULTING THEREFROM.

REVISIONS		
NO.	DESCRIPTION	DATE

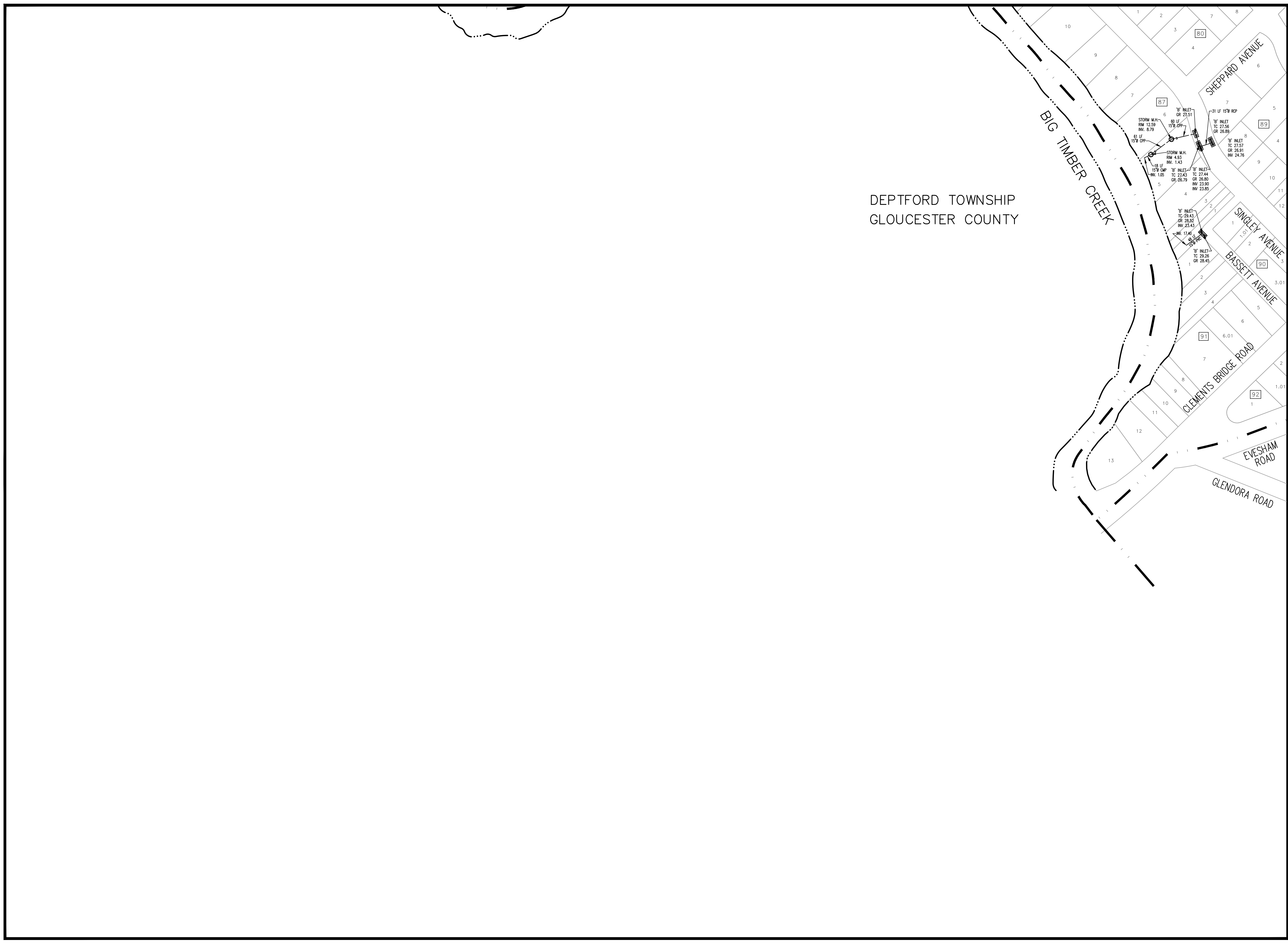
DRAWING TITLE:  
**STORM SEWER DISTRIBUTION SYSTEM**

JOB NO: RB2018-11	DESIGNED BY:
DATE: 6/8/23	DRAWN BY: LML
SCALE: 1"=100'	CHECKED BY: AFD

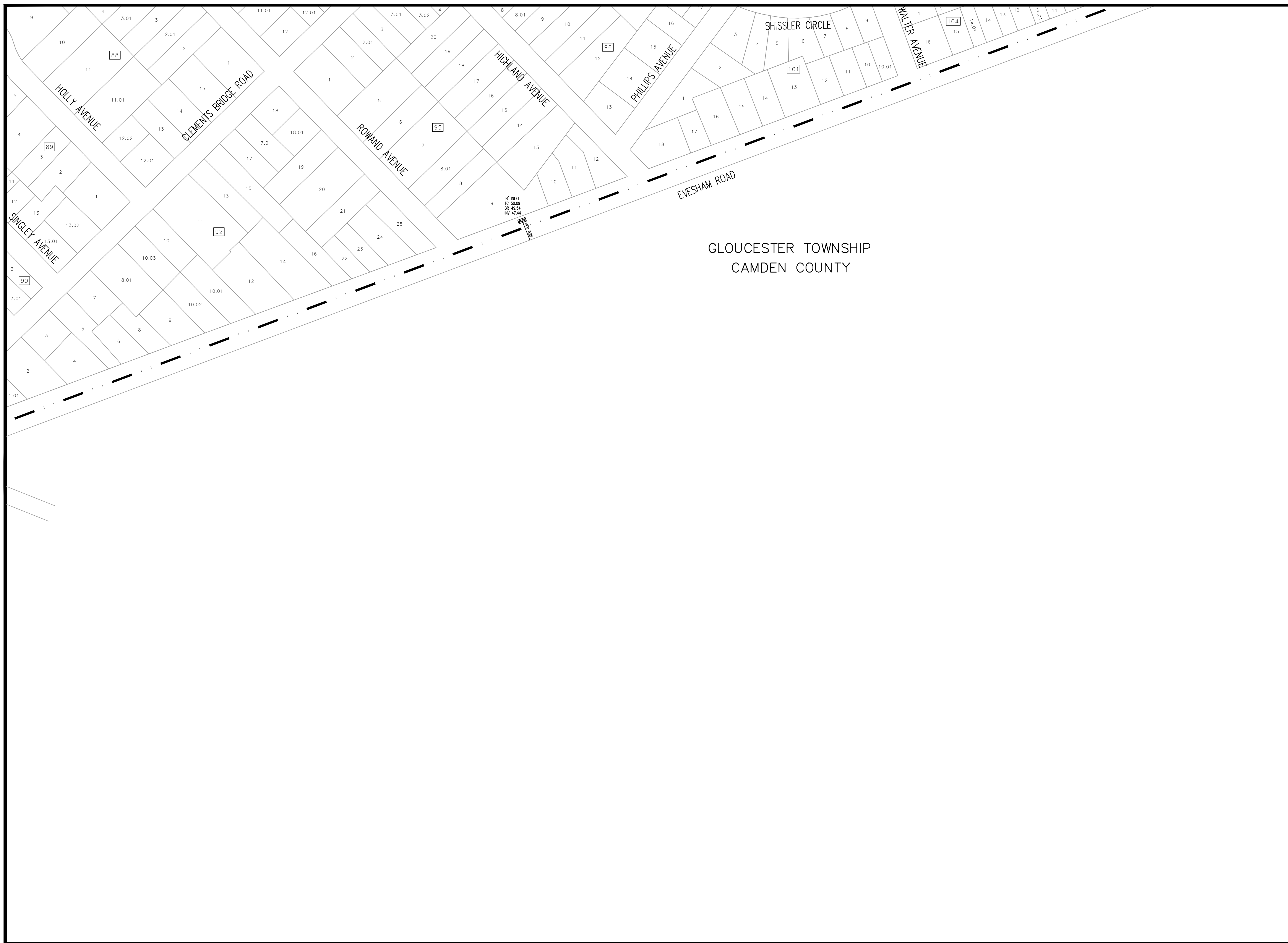
DRAWING NUMBER:

**D2**

DEPTFORD TOWNSHIP  
GLOUCESTER COUNTY







GLOUCESTER TOWNSHIP  
CAMDEN COUNTY



**BACH Associates, PC**  
ENGINEERS • ARCHITECTS • PLANNERS

304 White Horse Pike  
Haddon Heights, New Jersey 08035  
Tel: 856-546-8611  
Fax: 856-546-8612  
www.BachDesignGroup.com



A1	A2	A3	A4	A5
B1	B2	B3	B4	B5
C2	C3	C4	C5	
D2	D3			

PROJECT:

**STORM SEWER DISTRIBUTION SYSTEM**

BOROUGH OF RUNNEMEDE  
CAMDEN COUNTY, NEW JERSEY

ALL DOCUMENTS PREPARED BY BACH ASSOCIATES, PC ARE INSTRUMENTS OF SERVICE IN RESPECT OF THE PROJECT. THEY ARE NOT INTRODUCED OR REPRESENTED TO BE SUITABLE FOR REUSE BY OWNER OR OTHERS OR EXTENSIONS OF THE PROJECT OR ON ANY OTHER PROJECT. ANY REUSE WITHOUT WRITTEN VERIFICATION OR ADAPTATION BY BACH ASSOCIATES, PC FOR THE SPECIFIC PURPOSE INTENDED WILL BE AT OWNER'S SOLE RISK AND WITHOUT LIABILITY OR LEGAL EXPOSURE TO BACH ASSOCIATES, PC. AND OWNER SHALL INDEMNIFY AND HOLD HARMLESS BACH ASSOCIATES, PC FROM ALL CLAIMS, DAMAGES, LOSSES AND EXPENSES ARISING OUT OF OR RESULTING THEREFROM.

REVISIONS

NO.	DESCRIPTION	DATE

DRAWING TITLE:

**STORM SEWER DISTRIBUTION SYSTEM**

JOB NO: RB2018-11	DESIGNED BY:
DATE: 6/8/23	DRAWN BY: LML
SCALE: 1"=100'	CHECKED BY: AFD

DRAWING NUMBER:

**D3**